

# Player Statistics



Round of 16

## Brazil - Chile 3:0 (2:0)

Johannesburg / Ellis Park Stadium / RSA



**Chile**  
**1 Claudio BRAVO**  
 Goalkeeper

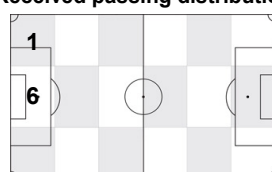
	1st half	2nd half	Total	Team total	Team avg
Goal(s) scored	0	0	0	0	
Attempts on/off target	0	0	0	9	
Assist(s)	0	0	0	0	
Offside(s)	0	0	0	1	
Save(s)	2	1	3	3	
Yellow card(s)	0	0	0	3	
Red card	0	0	0	0	
Foul(s) committed	0	0	0	18	
Delivery/solo runs into the attacking third	2	0	2	48	4.6
Delivery/solo runs into the penalty area	0	0	0	13	1.3
Tackles gaining the ball	0	0	0	2	0.2
Tackles not gaining the ball	0	0	0	1	0.1
Tackles suffered losing the ball	0	0	0	3	0.3
Tackles suffered not losing the ball	0	0	0	2	0.2
Clearances Completed	0	0	0	1	0.1
Clearances Attempted	0	0	0	3	0.3

Passing distribution



Direction of play →

Received passing distribution

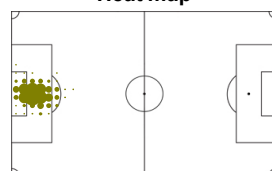


Direction of play →

## Activities

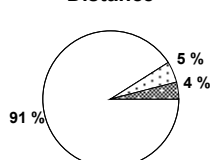
	1st half	2nd half	Total	Team total	Team avg
Total time played (mins)	46'05"	47'14"	93'19"		
Low activity time spent (%)	98%	98%	98%	82%	
Medium activity time spent (%)	1%	1%	1%	8%	
High activity time spent (%)	1%	1%	1%	10%	
Distance covered (metres)	2,146	2,354	4,500	108,562	9,870
Low activity distance covered (metres)	1,971	2,136	4,107	61,954	5,632
Medium activity distance covered (metres)	93	110	203	16,534	1,503
High activity distance covered (metres)	82	108	190	30,074	2,734
Top speed (km/h)	16.87	18.09	18.09	29.05	22.95
Sprints	1	3	4	1273	150

Heat map

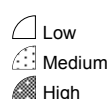


Direction of play →

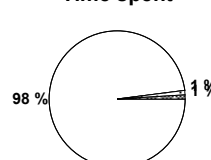
Distance



Activity



Time spent



FIFA does not vouch for the accuracy of technical statistics compiled in association with its competition results system partner.

MON 28 JUN 2010; 22:31 CET / 22:31 local time - Version 1

Page1/0

2010 FIFA World Cup South Africa™

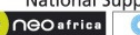
FIFA Partners



FIFA World Cup Sponsors



National Supporters



# Player Statistics



Round of 16

## Brazil - Chile 3:0 (2:0)

Johannesburg / Ellis Park Stadium / RSA



Chile

### 2 Ismael FUENTES

Defender

	1st half	2nd half	Total	Team total	Team avg
Goal(s) scored	0	0	0	0	
Attempts on/off target	0	0	0	9	
Assist(s)	0	0	0	0	
Offside(s)	0	0	0	1	
Save(s)	0	0	0	3	
Yellow card(s)	0	1	1	3	
Red card	0	0	0	0	
Foul(s) committed	2	1	3	18	
Delivery/solo runs into the attacking third	1	0	1	48	4.6
Delivery/solo runs into the penalty area	0	1	1	13	1.3
Tackles gaining the ball	0	0	0	2	0.2
Tackles not gaining the ball	0	0	0	1	0.1
Tackles suffered losing the ball	0	0	0	3	0.3
Tackles suffered not losing the ball	0	0	0	2	0.2
Clearances Completed	0	0	0	1	0.1
Clearances Attempted	0	0	0	3	0.3

Passing distribution



Direction of play →

Received passing distribution

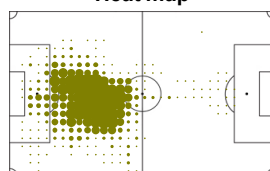


Direction of play →

## Activities

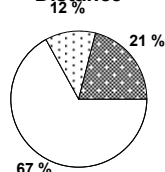
	1st half	2nd half	Total	Team total	Team avg
Total time played (mins)	46'05"	47'14"	93'19"		
Low activity time spent (%)	88%	86%	87%	82%	
Medium activity time spent (%)	5%	6%	6%	8%	
High activity time spent (%)	7%	8%	7%	10%	
Distance covered (metres)	4,324	4,456	8,780	108,562	9,870
Low activity distance covered (metres)	2,938	2,939	5,877	61,954	5,632
Medium activity distance covered (metres)	475	537	1,012	16,534	1,503
High activity distance covered (metres)	911	981	1,892	30,074	2,734
Top speed (km/h)	20.86	19.72	20.86	29.05	22.95
Sprints	32	42	74	1273	150

Heat map

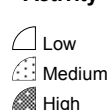


Direction of play →

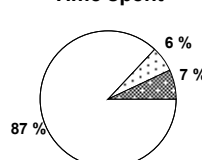
Distance



Activity



Time spent



FIFA does not vouch for the accuracy of technical statistics compiled in association with its competition results system partner.

MON 28 JUN 2010; 22:31 CET / 22:31 local time - Version 1

Page1/0

2010 FIFA World Cup South Africa™

FIFA Partners



FIFA World Cup Sponsors



National Supporters



# Player Statistics



Round of 16

**Brazil - Chile 3:0 (2:0)**

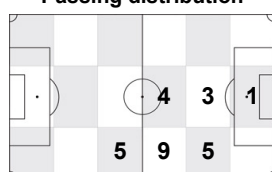
Johannesburg / Ellis Park Stadium / RSA



**Chile**  
**4 Mauricio ISLA**  
 Defender

	1st half	2nd half	Total	Team total	Team avg
Goal(s) scored	0	0	0	0	
Attempts on/off target	0	0	0	9	
Assist(s)	0	0	0	0	
Offside(s)	0	0	0	1	
Save(s)	0	0	0	3	
Yellow card(s)	0	0	0	3	
Red card	0	0	0	0	
Foul(s) committed	0	0	0	18	
Delivery/solo runs into the attacking third	3	1	4	48	4.6
Delivery/solo runs into the penalty area	0	1	1	13	1.3
Tackles gaining the ball	0	0	0	2	0.2
Tackles not gaining the ball	0	0	0	1	0.1
Tackles suffered losing the ball	0	0	0	3	0.3
Tackles suffered not losing the ball	0	0	0	2	0.2
Clearances Completed	0	0	0	1	0.1
Clearances Attempted	0	0	0	3	0.3

Passing distribution



Direction of play →

Received passing distribution

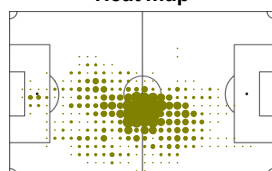


Direction of play →

## Activities

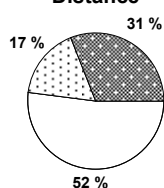
	1st half	2nd half	Total	Team total	Team avg
Total time played (mins)	46'05"	16'15"	62'20"		
Low activity time spent (%)	81%	75%	79%	82%	
Medium activity time spent (%)	9%	12%	10%	8%	
High activity time spent (%)	10%	13%	11%	10%	
Distance covered (metres)	5,133	1,986	7,119	108,562	9,870
Low activity distance covered (metres)	2,757	918	3,675	61,954	5,632
Medium activity distance covered (metres)	844	396	1,240	16,534	1,503
High activity distance covered (metres)	1,532	672	2,204	30,074	2,734
Top speed (km/h)	22.52	20.59	22.52	29.05	22.95
Sprints	73	34	107	1273	150

Heat map



Direction of play →

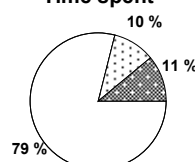
Distance



Activity



Time spent



FIFA does not vouch for the accuracy of technical statistics compiled in association with its competition results system partner.

MON 28 JUN 2010; 22:31 CET / 22:31 local time - Version 1

Page1/0

2010 FIFA World Cup South Africa™

FIFA Partners



FIFA World Cup Sponsors



National Supporters



# Player Statistics



Round of 16

## Brazil - Chile 3:0 (2:0)

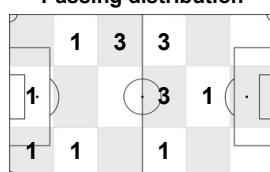
Johannesburg / Ellis Park Stadium / RSA



**Chile**  
**5 Pablo CONTRERAS**  
 Defender

	1st half	2nd half	Total	Team total	Team avg
Goal(s) scored	0	0	0	0	
Attempts on/off target	0	0	0	9	
Assist(s)	0	0	0	0	
Offside(s)	0	0	0	1	
Save(s)	0	0	0	3	
Yellow card(s)	0	0	0	3	
Red card	0	0	0	0	
Foul(s) committed	0	0	0	18	
Delivery/solo runs into the attacking third	1	0	1	48	4.6
Delivery/solo runs into the penalty area	0	0	0	13	1.3
Tackles gaining the ball	0	0	0	2	0.2
Tackles not gaining the ball	0	0	0	1	0.1
Tackles suffered losing the ball	0	0	0	3	0.3
Tackles suffered not losing the ball	0	0	0	2	0.2
Clearances Completed	1	0	1	1	0.1
Clearances Attempted	2	0	2	3	0.3

Passing distribution



Direction of play →

Received passing distribution

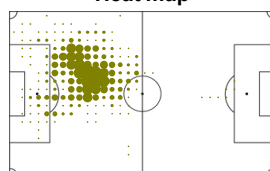


Direction of play →

## Activities

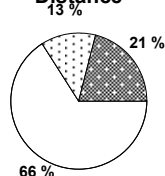
	1st half	2nd half	Total	Team total	Team avg
Total time played (mins)	46'05"	0'00"	46'05"		
Low activity time spent (%)	87%	0%	87%	82%	
Medium activity time spent (%)	6%	0%	6%	8%	
High activity time spent (%)	7%	0%	7%	10%	
Distance covered (metres)	4,427	-	4,427	108,562	9,870
Low activity distance covered (metres)	2,916	-	2,916	61,954	5,632
Medium activity distance covered (metres)	575	-	575	16,534	1,503
High activity distance covered (metres)	937	-	937	30,074	2,734
Top speed (km/h)	20.30	-	20.30	29.05	22.95
Sprints	37	-	37	1273	150

Heat map



Direction of play →

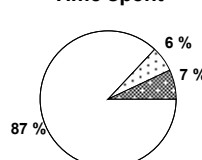
Distance



Activity



Time spent



FIFA does not vouch for the accuracy of technical statistics compiled in association with its competition results system partner.

MON 28 JUN 2010; 22:31 CET / 22:31 local time - Version 1

Page1/0

2010 FIFA World Cup South Africa™

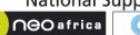
FIFA Partners



FIFA World Cup Sponsors



National Supporters



# Player Statistics



Round of 16

## Brazil - Chile 3:0 (2:0)

Johannesburg / Ellis Park Stadium / RSA



**Chile**  
**6 Carlos CARMONA**  
 Midfield

	1st half	2nd half	Total	Team total	Team avg
Goal(s) scored	0	0	0	0	
Attempts on/off target	0	0	0	9	
Assist(s)	0	0	0	0	
Offside(s)	0	0	0	1	
Save(s)	0	0	0	3	
Yellow card(s)	0	0	0	3	
Red card	0	0	0	0	
Foul(s) committed	3	1	4	18	
Delivery/solo runs into the attacking third	5	2	7	48	4.6
Delivery/solo runs into the penalty area	0	0	0	13	1.3
Tackles gaining the ball	0	0	0	2	0.2
Tackles not gaining the ball	0	0	0	1	0.1
Tackles suffered losing the ball	0	0	0	3	0.3
Tackles suffered not losing the ball	0	0	0	2	0.2
Clearances Completed	0	0	0	1	0.1
Clearances Attempted	0	0	0	3	0.3

Passing distribution



Direction of play →

Received passing distribution

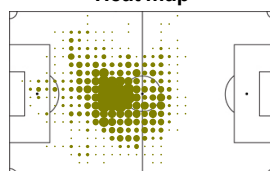


Direction of play →

## Activities

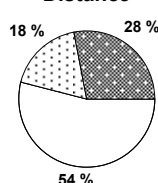
	1st half	2nd half	Total	Team total	Team avg
Total time played (mins)	46'05"	47'14"	93'19"		
Low activity time spent (%)	79%	77%	78%	82%	
Medium activity time spent (%)	10%	11%	11%	8%	
High activity time spent (%)	11%	12%	11%	10%	
Distance covered (metres)	5,490	5,744	11,234	108,562	9,870
Low activity distance covered (metres)	3,026	3,072	6,098	61,954	5,632
Medium activity distance covered (metres)	1,028	1,039	2,067	16,534	1,503
High activity distance covered (metres)	1,436	1,632	3,068	30,074	2,734
Top speed (km/h)	24.57	23.01	24.57	29.05	22.95
Sprints	51	75	126	1273	150

Heat map

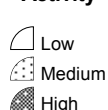


Direction of play →

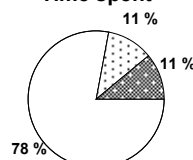
Distance



Activity



Time spent



FIFA does not vouch for the accuracy of technical statistics compiled in association with its competition results system partner.

MON 28 JUN 2010; 22:31 CET / 22:31 local time - Version 1

Page1/0

2010 FIFA World Cup South Africa™

FIFA Partners



FIFA World Cup Sponsors



National Supporters



# Player Statistics



Round of 16

**Brazil - Chile 3:0 (2:0)**

Johannesburg / Ellis Park Stadium / RSA



**Chile**  
**7 Alexis SANCHEZ**  
 Forward

	1st half	2nd half	Total	Team total	Team avg
Goal(s) scored	0	0	0	0	
Attempts on/off target	0	0	0	9	
Assist(s)	0	0	0	0	
Offside(s)	0	0	0	1	
Save(s)	0	0	0	3	
Yellow card(s)	0	0	0	3	
Red card	0	0	0	0	
Foul(s) committed	0	2	2	18	
Delivery/solo runs into the attacking third	3	4	7	48	4.6
Delivery/solo runs into the penalty area	1	3	4	13	1.3
Tackles gaining the ball	0	0	0	2	0.2
Tackles not gaining the ball	1	0	1	1	0.1
Tackles suffered losing the ball	0	1	1	3	0.3
Tackles suffered not losing the ball	1	0	1	2	0.2
Clearances Completed	0	0	0	1	0.1
Clearances Attempted	0	0	0	3	0.3

Passing distribution



Direction of play →

Received passing distribution

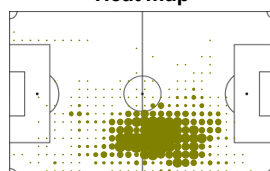


Direction of play →

## Activities

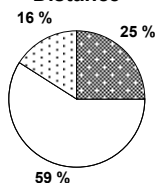
	1st half	2nd half	Total	Team total	Team avg
Total time played (mins)	46'05"	47'14"	93'19"		
Low activity time spent (%)	81%	83%	82%	82%	
Medium activity time spent (%)	11%	7%	9%	8%	
High activity time spent (%)	8%	10%	9%	10%	
Distance covered (metres)	5,014	4,810	9,824	108,562	9,870
Low activity distance covered (metres)	2,899	2,863	5,762	61,954	5,632
Medium activity distance covered (metres)	928	633	1,561	16,534	1,503
High activity distance covered (metres)	1,186	1,314	2,500	30,074	2,734
Top speed (km/h)	19.49	29.05	29.05	29.05	22.95
Sprints	52	60	112	1273	150

Heat map



Direction of play →

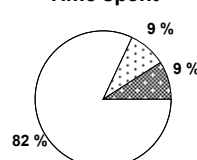
Distance



Activity



Time spent



FIFA does not vouch for the accuracy of technical statistics compiled in association with its competition results system partner.

MON 28 JUN 2010; 22:31 CET / 22:31 local time - Version 1

Page1/0

2010 FIFA World Cup South Africa™

FIFA Partners



FIFA World Cup Sponsors



National Supporters



# Player Statistics



Round of 16

## Brazil - Chile 3:0 (2:0)

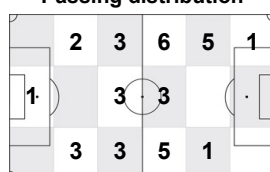
Johannesburg / Ellis Park Stadium / RSA



**Chile**  
**8 Arturo VIDAL**  
 Midfield

	1st half	2nd half	Total	Team total	Team avg
Goal(s) scored	0	0	0	0	
Attempts on/off target	0	0	0	9	
Assist(s)	0	0	0	0	
Offside(s)	0	0	0	1	
Save(s)	0	0	0	3	
Yellow card(s)	0	1	1	3	
Red card	0	0	0	0	
Foul(s) committed	1	2	3	18	
Delivery/solo runs into the attacking third	4	0	4	48	4.6
Delivery/solo runs into the penalty area	0	0	0	13	1.3
Tackles gaining the ball	1	0	1	2	0.2
Tackles not gaining the ball	0	0	0	1	0.1
Tackles suffered losing the ball	1	0	1	3	0.3
Tackles suffered not losing the ball	0	0	0	2	0.2
Clearances Completed	0	0	0	1	0.1
Clearances Attempted	0	0	0	3	0.3

Passing distribution



Direction of play →

Received passing distribution



Direction of play →

## Activities

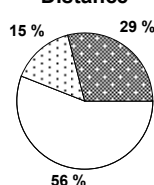
	1st half	2nd half	Total	Team total	Team avg
Total time played (mins)	46'05"	47'14"	93'19"		
Low activity time spent (%)	80%	80%	80%	82%	
Medium activity time spent (%)	11%	8%	9%	8%	
High activity time spent (%)	9%	12%	11%	10%	
Distance covered (metres)	5,387	5,227	10,614	108,562	9,870
Low activity distance covered (metres)	3,035	2,883	5,918	61,954	5,632
Medium activity distance covered (metres)	898	737	1,635	16,534	1,503
High activity distance covered (metres)	1,454	1,607	3,061	30,074	2,734
Top speed (km/h)	20.28	22.75	22.75	29.05	22.95
Sprints	64	78	142	1273	150

Heat map



Direction of play →

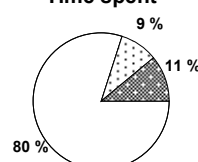
Distance



Activity



Time spent



FIFA does not vouch for the accuracy of technical statistics compiled in association with its competition results system partner.

MON 28 JUN 2010; 22:31 CET / 22:31 local time - Version 1

Page1/0

2010 FIFA World Cup South Africa™

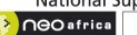
FIFA Partners



FIFA World Cup Sponsors



National Supporters



# Player Statistics



Round of 16

## Brazil - Chile 3:0 (2:0)

Johannesburg / Ellis Park Stadium / RSA



**Chile**  
**9 Humberto SUAZO**  
 Forward

	1st half	2nd half	Total	Team total	Team avg
Goal(s) scored	0	0	0	0	
Attempts on/off target	1	2	3	9	
Assist(s)	0	0	0	0	
Offside(s)	0	1	1	1	
Save(s)	0	0	0	3	
Yellow card(s)	0	0	0	3	
Red card	0	0	0	0	
Foul(s) committed	0	1	1	18	
Delivery/solo runs into the attacking third	2	1	3	48	4.6
Delivery/solo runs into the penalty area	1	0	1	13	1.3
Tackles gaining the ball	0	0	0	2	0.2
Tackles not gaining the ball	0	0	0	1	0.1
Tackles suffered losing the ball	1	0	1	3	0.3
Tackles suffered not losing the ball	0	0	0	2	0.2
Clearances Completed	0	0	0	1	0.1
Clearances Attempted	0	0	0	3	0.3

Passing distribution



Direction of play →

Received passing distribution

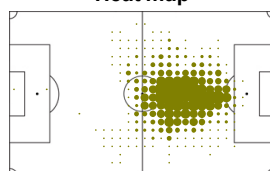


Direction of play →

## Activities

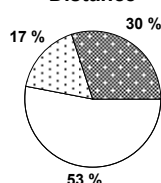
	1st half	2nd half	Total	Team total	Team avg
Total time played (mins)	46'05"	47'14"	93'19"		
Low activity time spent (%)	74%	78%	76%	82%	
Medium activity time spent (%)	12%	9%	11%	8%	
High activity time spent (%)	14%	13%	13%	10%	
Distance covered (metres)	5,898	5,508	11,406	108,562	9,870
Low activity distance covered (metres)	3,001	3,058	6,059	61,954	5,632
Medium activity distance covered (metres)	1,070	904	1,974	16,534	1,503
High activity distance covered (metres)	1,828	1,546	3,374	30,074	2,734
Top speed (km/h)	22.53	19.08	22.53	29.05	22.95
Sprints	56	55	111	1273	150

Heat map



Direction of play →

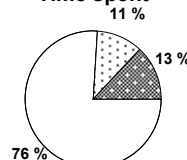
Distance



Activity



Time spent



FIFA does not vouch for the accuracy of technical statistics compiled in association with its competition results system partner.

MON 28 JUN 2010; 22:31 CET / 22:31 local time - Version 1

Page1/0

2010 FIFA World Cup South Africa™

FIFA Partners



FIFA World Cup Sponsors



National Supporters





# Player Statistics



Round of 16

## Brazil - Chile 3:0 (2:0)

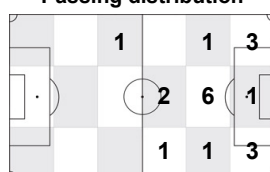
Johannesburg / Ellis Park Stadium / RSA



**Chile**  
**10 Jorge VALDIVIA**  
 Midfield

	1st half	2nd half	Total	Team total	Team avg
Goal(s) scored	0	0	0	0	
Attempts on/off target	0	2	2	9	
Assist(s)	0	0	0	0	
Offside(s)	0	0	0	1	
Save(s)	0	0	0	3	
Yellow card(s)	0	0	0	3	
Red card	0	0	0	0	
Foul(s) committed	0	2	2	18	
Delivery/solo runs into the attacking third	-	4	4	48	4.6
Delivery/solo runs into the penalty area	-	3	3	13	1.3
Tackles gaining the ball	-	0	0	2	0.2
Tackles not gaining the ball	-	0	0	1	0.1
Tackles suffered losing the ball	-	0	0	3	0.3
Tackles suffered not losing the ball	-	0	0	2	0.2
Clearances Completed	-	0	0	1	0.1
Clearances Attempted	-	0	0	3	0.3

Passing distribution



Direction of play →

Received passing distribution

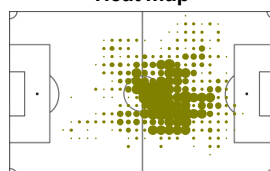


Direction of play →

## Activities

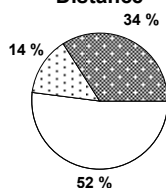
	1st half	2nd half	Total	Team total	Team avg
Total time played (mins)	0'00"	47'14"	47'14"		
Low activity time spent (%)	0%	79%	79%	82%	
Medium activity time spent (%)	0%	8%	8%	8%	
High activity time spent (%)	0%	13%	13%	10%	
Distance covered (metres)	-	5,276	5,276	108,562	9,870
Low activity distance covered (metres)	-	2,736	2,736	61,954	5,632
Medium activity distance covered (metres)	-	720	720	16,534	1,503
High activity distance covered (metres)	-	1,820	1,820	30,074	2,734
Top speed (km/h)	-	21.73	21.73	29.05	22.95
Sprints	-	67	67	1273	150

Heat map



Direction of play →

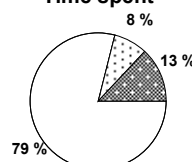
Distance



Activity



Time spent



FIFA does not vouch for the accuracy of technical statistics compiled in association with its competition results system partner.

MON 28 JUN 2010; 22:31 CET / 22:31 local time - Version 1

Page1/0

2010 FIFA World Cup South Africa™

FIFA Partners



FIFA World Cup Sponsors



National Supporters



# Player Statistics



Round of 16

## Brazil - Chile 3:0 (2:0)

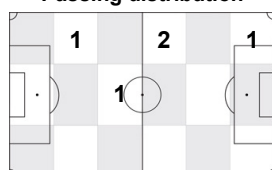
Johannesburg / Ellis Park Stadium / RSA



**Chile**  
**11 Mark GONZALEZ**  
 Forward

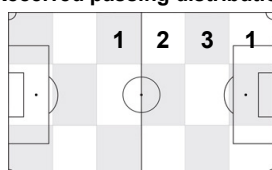
	1st half	2nd half	Total	Team total	Team avg
Goal(s) scored	0	0	0	0	
Attempts on/off target	1	0	1	9	
Assist(s)	0	0	0	0	
Offside(s)	0	0	0	1	
Save(s)	0	0	0	3	
Yellow card(s)	0	0	0	3	
Red card	0	0	0	0	
Foul(s) committed	1	0	1	18	
Delivery/solo runs into the attacking third	0	0	0	48	4.6
Delivery/solo runs into the penalty area	0	0	0	13	1.3
Tackles gaining the ball	0	0	0	2	0.2
Tackles not gaining the ball	0	0	0	1	0.1
Tackles suffered losing the ball	0	0	0	3	0.3
Tackles suffered not losing the ball	0	0	0	2	0.2
Clearances Completed	0	0	0	1	0.1
Clearances Attempted	0	0	0	3	0.3

Passing distribution



Direction of play →

Received passing distribution

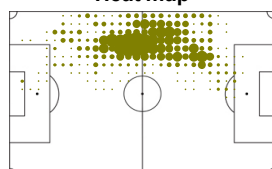


Direction of play →

### Activities

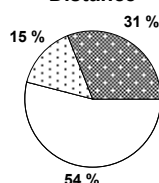
	1st half	2nd half	Total	Team total	Team avg
Total time played (mins)	46'05"	0'00"	46'05"		
Low activity time spent (%)	80%	0%	80%	82%	
Medium activity time spent (%)	9%	0%	9%	8%	
High activity time spent (%)	11%	0%	11%	10%	
Distance covered (metres)	5,314	-	5,314	108,562	9,870
Low activity distance covered (metres)	2,887	-	2,887	61,954	5,632
Medium activity distance covered (metres)	816	-	816	16,534	1,503
High activity distance covered (metres)	1,611	-	1,611	30,074	2,734
Top speed (km/h)	23.02	-	23.02	29.05	22.95
Sprints	75	-	75	1273	150

Heat map



Direction of play →

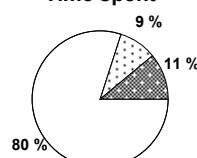
Distance



Activity



Time spent



FIFA does not vouch for the accuracy of technical statistics compiled in association with its competition results system partner.

MON 28 JUN 2010; 22:31 CET / 22:31 local time - Version 1

Page1/0

2010 FIFA World Cup South Africa™

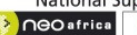
FIFA Partners



FIFA World Cup Sponsors



National Supporters



# Player Statistics



Round of 16

**Brazil - Chile 3:0 (2:0)**

Johannesburg / Ellis Park Stadium / RSA



**Chile**  
**15 Jean BEAUSEJOUR**  
 Forward

	1st half	2nd half	Total	Team total	Team avg
Goal(s) scored	0	0	0	0	
Attempts on/off target	1	1	2	9	
Assist(s)	0	0	0	0	
Offside(s)	0	0	0	1	
Save(s)	0	0	0	3	
Yellow card(s)	0	0	0	3	
Red card	0	0	0	0	
Foul(s) committed	0	0	0	18	
Delivery/solo runs into the attacking third	0	1	1	48	4.6
Delivery/solo runs into the penalty area	1	0	1	13	1.3
Tackles gaining the ball	0	0	0	2	0.2
Tackles not gaining the ball	0	0	0	1	0.1
Tackles suffered losing the ball	0	0	0	3	0.3
Tackles suffered not losing the ball	0	1	1	2	0.2
Clearances Completed	0	0	0	1	0.1
Clearances Attempted	0	0	0	3	0.3

Passing distribution



Direction of play →

Received passing distribution

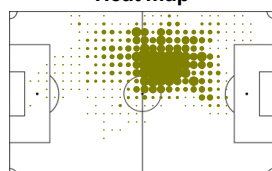


Direction of play →

## Activities

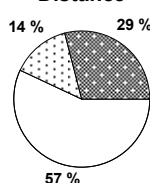
	1st half	2nd half	Total	Team total	Team avg
Total time played (mins)	46'05"	47'14"	93'19"		
Low activity time spent (%)	82%	82%	82%	82%	
Medium activity time spent (%)	8%	7%	8%	8%	
High activity time spent (%)	10%	11%	10%	10%	
Distance covered (metres)	5,096	5,014	10,110	108,562	9,870
Low activity distance covered (metres)	2,933	2,791	5,724	61,954	5,632
Medium activity distance covered (metres)	764	671	1,435	16,534	1,503
High activity distance covered (metres)	1,399	1,552	2,951	30,074	2,734
Top speed (km/h)	22.55	28.15	28.15	29.05	22.95
Sprints	57	62	119	1273	150

Heat map



Direction of play →

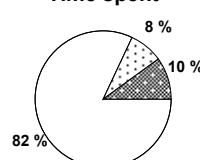
Distance



Activity



Time spent



FIFA does not vouch for the accuracy of technical statistics compiled in association with its competition results system partner.

MON 28 JUN 2010; 22:31 CET / 22:31 local time - Version 1

Page1/0

2010 FIFA World Cup South Africa™

FIFA Partners



FIFA World Cup Sponsors



National Supporters



# Player Statistics



Round of 16

## Brazil - Chile 3:0 (2:0)

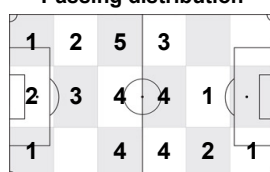
Johannesburg / Ellis Park Stadium / RSA



**Chile**  
**18 Gonzalo JARA**  
 Defender

	1st half	2nd half	Total	Team total	Team avg
Goal(s) scored	0	0	0	0	
Attempts on/off target	1	0	1	9	
Assist(s)	0	0	0	0	
Offside(s)	0	0	0	1	
Save(s)	0	0	0	3	
Yellow card(s)	0	0	0	3	
Red card	0	0	0	0	
Foul(s) committed	1	0	1	18	
Delivery/solo runs into the attacking third	4	0	4	48	4.6
Delivery/solo runs into the penalty area	0	0	0	13	1.3
Tackles gaining the ball	1	0	1	2	0.2
Tackles not gaining the ball	0	0	0	1	0.1
Tackles suffered losing the ball	0	0	0	3	0.3
Tackles suffered not losing the ball	0	0	0	2	0.2
Clearances Completed	0	0	0	1	0.1
Clearances Attempted	1	0	1	3	0.3

Passing distribution



Direction of play →

Received passing distribution



Direction of play →

## Activities

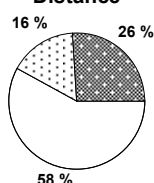
	1st half	2nd half	Total	Team total	Team avg
Total time played (mins)	46'05"	47'14"	93'19"		
Low activity time spent (%)	80%	85%	82%	82%	
Medium activity time spent (%)	10%	8%	9%	8%	
High activity time spent (%)	10%	7%	9%	10%	
Distance covered (metres)	5,270	4,679	9,949	108,562	9,870
Low activity distance covered (metres)	2,884	2,857	5,741	61,954	5,632
Medium activity distance covered (metres)	882	678	1,560	16,534	1,503
High activity distance covered (metres)	1,504	1,144	2,648	30,074	2,734
Top speed (km/h)	20.96	21.91	21.91	29.05	22.95
Sprints	74	61	135	1273	150

Heat map



Direction of play →

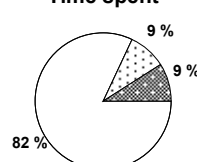
Distance



Activity



Time spent



FIFA does not vouch for the accuracy of technical statistics compiled in association with its competition results system partner.

MON 28 JUN 2010; 22:31 CET / 22:31 local time - Version 1

Page1/0

2010 FIFA World Cup South Africa™

FIFA Partners



FIFA World Cup Sponsors



National Supporters



# Player Statistics



Round of 16

**Brazil - Chile 3:0 (2:0)**

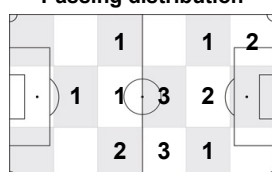
Johannesburg / Ellis Park Stadium / RSA



**Chile**  
**20 Rodrigo MILLAR**  
 Midfield

	1st half	2nd half	Total	Team total	Team avg
Goal(s) scored	0	0	0	0	
Attempts on/off target	0	0	0	9	
Assist(s)	0	0	0	0	
Offside(s)	0	0	0	1	
Save(s)	0	0	0	3	
Yellow card(s)	0	1	1	3	
Red card	0	0	0	0	
Foul(s) committed	0	1	1	18	
Delivery/solo runs into the attacking third	-	4	4	48	4.6
Delivery/solo runs into the penalty area	-	0	0	13	1.3
Tackles gaining the ball	-	0	0	2	0.2
Tackles not gaining the ball	-	0	0	1	0.1
Tackles suffered losing the ball	-	0	0	3	0.3
Tackles suffered not losing the ball	-	0	0	2	0.2
Clearances Completed	-	0	0	1	0.1
Clearances Attempted	-	0	0	3	0.3

Passing distribution



Direction of play →

Received passing distribution

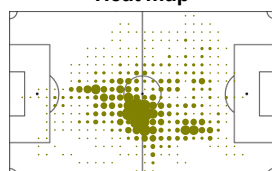


Direction of play →

## Activities

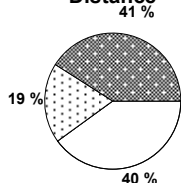
	1st half	2nd half	Total	Team total	Team avg
Total time played (mins)	0'00"	30'59"	30'59"		
Low activity time spent (%)	0%	69%	69%	82%	
Medium activity time spent (%)	0%	13%	13%	8%	
High activity time spent (%)	0%	18%	18%	10%	
Distance covered (metres)	-	4,143	4,143	108,562	9,870
Low activity distance covered (metres)	-	1,677	1,677	61,954	5,632
Medium activity distance covered (metres)	-	774	774	16,534	1,503
High activity distance covered (metres)	-	1,691	1,691	30,074	2,734
Top speed (km/h)	-	21.70	21.70	29.05	22.95
Sprints	-	80	80	1273	150

Heat map



Direction of play →

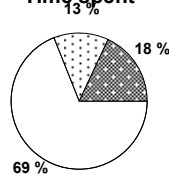
Distance



Activity



Time spent



FIFA does not vouch for the accuracy of technical statistics compiled in association with its competition results system partner.

MON 28 JUN 2010; 22:31 CET / 22:31 local time - Version 1

Page1/0

2010 FIFA World Cup South Africa™

FIFA Partners



FIFA World Cup Sponsors



National Supporters



# Player Statistics



Round of 16

**Brazil - Chile 3:0 (2:0)**

Johannesburg / Ellis Park Stadium / RSA



**Chile**  
**21 Rodrigo TELLO**  
 Midfield

	1st half	2nd half	Total	Team total	Team avg
Goal(s) scored	0	0	0	0	
Attempts on/off target	0	0	0	9	
Assist(s)	0	0	0	0	
Offside(s)	0	0	0	1	
Save(s)	0	0	0	3	
Yellow card(s)	0	0	0	3	
Red card	0	0	0	0	
Foul(s) committed	0	0	0	18	
Delivery/solo runs into the attacking third	-	6	6	48	4.6
Delivery/solo runs into the penalty area	-	2	2	13	1.3
Tackles gaining the ball	-	0	0	2	0.2
Tackles not gaining the ball	-	0	0	1	0.1
Tackles suffered losing the ball	-	0	0	3	0.3
Tackles suffered not losing the ball	-	0	0	2	0.2
Clearances Completed	-	0	0	1	0.1
Clearances Attempted	-	0	0	3	0.3

Passing distribution



Direction of play →

Received passing distribution

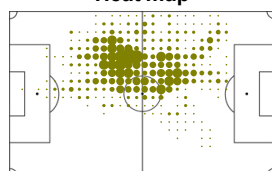


Direction of play →

## Activities

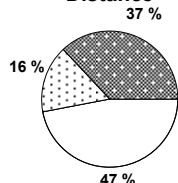
	1st half	2nd half	Total	Team total	Team avg
Total time played (mins)	0'00"	47'14"	47'14"		
Low activity time spent (%)	0%	74%	74%	82%	
Medium activity time spent (%)	0%	10%	10%	8%	
High activity time spent (%)	0%	16%	16%	10%	
Distance covered (metres)	-	5,866	5,866	108,562	9,870
Low activity distance covered (metres)	-	2,777	2,777	61,954	5,632
Medium activity distance covered (metres)	-	962	962	16,534	1,503
High activity distance covered (metres)	-	2,127	2,127	30,074	2,734
Top speed (km/h)	-	24.16	24.16	29.05	22.95
Sprints	-	84	84	1273	150

Heat map



Direction of play →

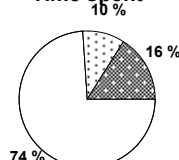
Distance



Activity



Time spent



FIFA does not vouch for the accuracy of technical statistics compiled in association with its competition results system partner.

MON 28 JUN 2010; 22:31 CET / 22:31 local time - Version 1

Page1/0

2010 FIFA World Cup South Africa™

FIFA Partners



FIFA World Cup Sponsors



National Supporters



