

Player Statistics



Group E

Denmark - Japan 1:3 (0:2)

Rustenburg / Royal Bafokeng Stadium / RSA



Denmark
1 Thomas SORENSEN
Goalkeeper

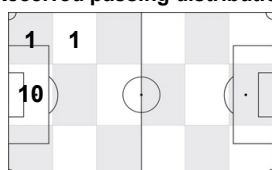
	1st half	2nd half	Total	Team total	Team avg
Goal(s) scored	0	0	0	1	
Attempts on/off target	0	0	0	13	
Assist(s)	0	0	0	0	
Offside(s)	0	0	0	0	
Save(s)	2	5	7	7	
Yellow card(s)	0	0	0	3	
Red card	0	0	0	0	
Foul(s) committed	0	0	0	23	
Delivery/solo runs into the attacking third	0	3	3	68	6.5
Delivery/solo runs into the penalty area	0	0	0	13	1.3
Tackles gaining the ball	0	0	0	3	0.3
Tackles not gaining the ball	0	0	0	7	0.7
Tackles suffered losing the ball	0	0	0	2	0.2
Tackles suffered not losing the ball	0	0	0	0	0.0
Clearances Completed	0	0	0	3	0.3
Clearances Attempted	0	0	0	6	0.6

Passing distribution



Direction of play →

Received passing distribution

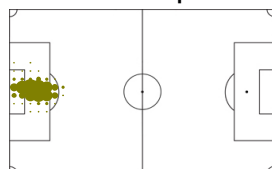


Direction of play →

Activities

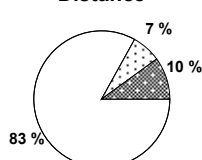
	1st half	2nd half	Total	Team total	Team avg
Total time played (mins)	47'04"	49'12"	96'16"		
Low activity time spent (%)	98%	95%	97%	83%	
Medium activity time spent (%)	1%	2%	2%	8%	
High activity time spent (%)	1%	3%	1%	9%	
Distance covered (metres)	2,029	2,276	4,305	107,518	9,774
Low activity distance covered (metres)	1,823	1,764	3,587	62,751	5,704
Medium activity distance covered (metres)	119	202	321	17,139	1,558
High activity distance covered (metres)	87	310	397	27,628	2,512
Top speed (km/h)	12.47	17.57	17.57	28.72	21.80
Sprints	3	8	11	994	115

Heat map



Direction of play →

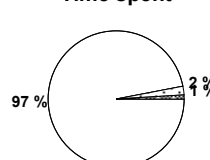
Distance



Activity



Time spent



FIFA does not vouch for the accuracy of technical statistics compiled in association with its competition results system partner.

THU 24 JUN 2010; 22:41 CET / 22:41 local time - Version 1

Page1/0

2010 FIFA World Cup South Africa™

FIFA Partners



FIFA World Cup Sponsors



National Supporters



Player Statistics



Group E

Denmark - Japan 1:3 (0:2)

Rustenburg / Royal Bafokeng Stadium / RSA



Denmark
2 Christian POULSEN
 Midfield

	1st half	2nd half	Total	Team total	Team avg
Goal(s) scored	0	0	0	1	
Attempts on/off target	1	0	1	13	
Assist(s)	0	0	0	0	
Offside(s)	0	0	0	0	
Save(s)	0	0	0	7	
Yellow card(s)	0	1	1	3	
Red card	0	0	0	0	
Foul(s) committed	2	3	5	23	
Delivery/solo runs into the attacking third	8	8	16	68	6.5
Delivery/solo runs into the penalty area	1	1	2	13	1.3
Tackles gaining the ball	0	0	0	3	0.3
Tackles not gaining the ball	0	0	0	7	0.7
Tackles suffered losing the ball	0	0	0	2	0.2
Tackles suffered not losing the ball	0	0	0	0	0.0
Clearances Completed	0	0	0	3	0.3
Clearances Attempted	0	0	0	6	0.6

Passing distribution



Direction of play →

Received passing distribution

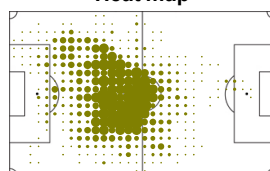


Direction of play →

Activities

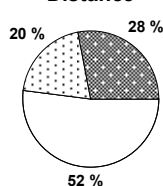
	1st half	2nd half	Total	Team total	Team avg
Total time played (mins)	47'04"	49'12"	96'16"		
Low activity time spent (%)	73%	78%	75%	83%	
Medium activity time spent (%)	14%	11%	13%	8%	
High activity time spent (%)	13%	11%	12%	9%	
Distance covered (metres)	6,101	5,799	11,900	107,518	9,774
Low activity distance covered (metres)	2,993	3,151	6,144	62,751	5,704
Medium activity distance covered (metres)	1,296	1,064	2,360	17,139	1,558
High activity distance covered (metres)	1,812	1,584	3,396	27,628	2,512
Top speed (km/h)	21.69	22.63	22.63	28.72	21.80
Sprints	34	48	82	994	115

Heat map



Direction of play →

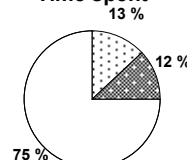
Distance



Activity



Time spent



FIFA does not vouch for the accuracy of technical statistics compiled in association with its competition results system partner.

THU 24 JUN 2010; 22:41 CET / 22:41 local time - Version 1

Page1/0

2010 FIFA World Cup South Africa™

FIFA Partners



FIFA World Cup Sponsors



National Supporters



Player Statistics



Group E

Denmark - Japan 1:3 (0:2)

Rustenburg / Royal Bafokeng Stadium / RSA



Denmark

4 Daniel AGGER

Defender

	1st half	2nd half	Total	Team total	Team avg
Goal(s) scored	0	0	0	1	
Attempts on/off target	0	1	1	13	
Assist(s)	0	0	0	0	
Offside(s)	0	0	0	0	
Save(s)	0	0	0	7	
Yellow card(s)	0	0	0	3	
Red card	0	0	0	0	
Foul(s) committed	3	1	4	23	
Delivery/solo runs into the attacking third	0	4	4	68	6.5
Delivery/solo runs into the penalty area	0	0	0	13	1.3
Tackles gaining the ball	1	0	1	3	0.3
Tackles not gaining the ball	0	0	0	7	0.7
Tackles suffered losing the ball	0	0	0	2	0.2
Tackles suffered not losing the ball	0	0	0	0	0.0
Clearances Completed	0	0	0	3	0.3
Clearances Attempted	1	0	1	6	0.6

Passing distribution



Direction of play →

Received passing distribution

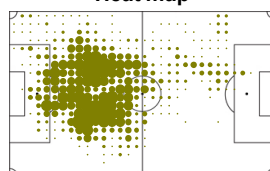


Direction of play →

Activities

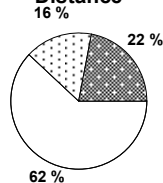
	1st half	2nd half	Total	Team total	Team avg
Total time played (mins)	47'04"	49'12"	96'16"		
Low activity time spent (%)	85%	83%	84%	83%	
Medium activity time spent (%)	9%	8%	9%	8%	
High activity time spent (%)	6%	9%	7%	9%	
Distance covered (metres)	4,703	5,020	9,723	107,518	9,774
Low activity distance covered (metres)	2,974	3,088	6,062	62,751	5,704
Medium activity distance covered (metres)	805	724	1,529	17,139	1,558
High activity distance covered (metres)	924	1,208	2,132	27,628	2,512
Top speed (km/h)	20.69	19.05	20.69	28.72	21.80
Sprints	33	40	73	994	115

Heat map



Direction of play →

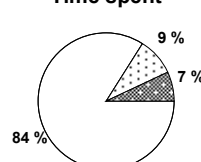
Distance



Activity



Time spent



FIFA does not vouch for the accuracy of technical statistics compiled in association with its competition results system partner.

THU 24 JUN 2010; 22:41 CET / 22:41 local time - Version 1

Page1/0

2010 FIFA World Cup South Africa™

FIFA Partners



FIFA World Cup Sponsors



National Supporters



Player Statistics



Group E

Denmark - Japan 1:3 (0:2)

Rustenburg / Royal Bafokeng Stadium / RSA



Denmark

6 Lars JACOBSEN

Defender

	1st half	2nd half	Total	Team total	Team avg
Goal(s) scored	0	0	0	1	
Attempts on/off target	0	0	0	13	
Assist(s)	0	0	0	0	
Offside(s)	0	0	0	0	
Save(s)	0	0	0	7	
Yellow card(s)	0	0	0	3	
Red card	0	0	0	0	
Foul(s) committed	0	0	0	23	
Delivery/solo runs into the attacking third	4	8	12	68	6.5
Delivery/solo runs into the penalty area	1	3	4	13	1.3
Tackles gaining the ball	0	0	0	3	0.3
Tackles not gaining the ball	1	0	1	7	0.7
Tackles suffered losing the ball	0	0	0	2	0.2
Tackles suffered not losing the ball	0	0	0	0	0.0
Clearances Completed	0	0	0	3	0.3
Clearances Attempted	0	0	0	6	0.6

Passing distribution



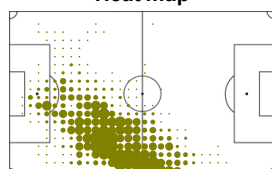
Received passing distribution



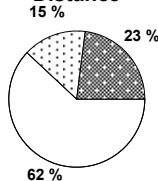
Activities

	1st half	2nd half	Total	Team total	Team avg
Total time played (mins)	47'04"	49'12"	96'16"		
Low activity time spent (%)	85%	85%	85%	83%	
Medium activity time spent (%)	8%	8%	8%	8%	
High activity time spent (%)	7%	7%	7%	9%	
Distance covered (metres)	4,802	4,521	9,323	107,518	9,774
Low activity distance covered (metres)	2,921	2,833	5,754	62,751	5,704
Medium activity distance covered (metres)	779	663	1,442	17,139	1,558
High activity distance covered (metres)	1,101	1,025	2,126	27,628	2,512
Top speed (km/h)	21.08	22.04	22.04	28.72	21.80
Sprints	47	47	94	994	115

Heat map



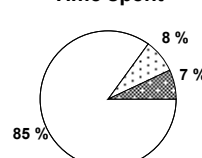
Distance



Activity



Time spent



FIFA does not vouch for the accuracy of technical statistics compiled in association with its competition results system partner.

THU 24 JUN 2010; 22:41 CET / 22:41 local time - Version 1

Page1/0

2010 FIFA World Cup South Africa™

FIFA Partners



FIFA World Cup Sponsors



National Supporters



Player Statistics



Group E

Denmark - Japan 1:3 (0:2)

Rustenburg / Royal Bafokeng Stadium / RSA



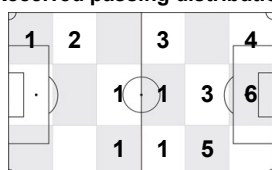
Denmark
9 Jon Dahl TOMASSON
 Forward

	1st half	2nd half	Total	Team total	Team avg
Goal(s) scored	0	1	1	1	
Attempts on/off target	2	2	4	13	
Assist(s)	0	0	0	0	
Offside(s)	0	0	0	0	
Save(s)	0	0	0	7	
Yellow card(s)	0	0	0	3	
Red card	0	0	0	0	
Foul(s) committed	0	1	1	23	
Delivery/solo runs into the attacking third	1	0	1	68	6.5
Delivery/solo runs into the penalty area	0	0	0	13	1.3
Tackles gaining the ball	0	0	0	3	0.3
Tackles not gaining the ball	0	0	0	7	0.7
Tackles suffered losing the ball	0	0	0	2	0.2
Tackles suffered not losing the ball	0	0	0	0	0.0
Clearances Completed	0	0	0	3	0.3
Clearances Attempted	0	0	0	6	0.6

Passing distribution



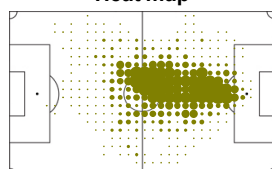
Received passing distribution



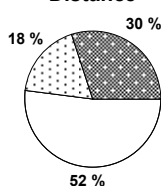
Activities

	1st half	2nd half	Total	Team total	Team avg
Total time played (mins)	47'04"	49'12"	96'16"		
Low activity time spent (%)	77%	75%	76%	83%	
Medium activity time spent (%)	11%	13%	12%	8%	
High activity time spent (%)	12%	12%	12%	9%	
Distance covered (metres)	5,770	5,197	10,967	107,518	9,774
Low activity distance covered (metres)	2,808	2,943	5,751	62,751	5,704
Medium activity distance covered (metres)	1,017	959	1,976	17,139	1,558
High activity distance covered (metres)	1,946	1,296	3,242	27,628	2,512
Top speed (km/h)	21.36	20.79	21.36	28.72	21.80
Sprints	61	44	105	994	115

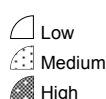
Heat map



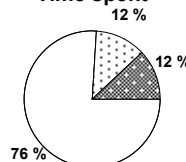
Distance



Activity



Time spent



FIFA does not vouch for the accuracy of technical statistics compiled in association with its competition results system partner.

THU 24 JUN 2010; 22:41 CET / 22:41 local time - Version 1

Page1/0

2010 FIFA World Cup South Africa™

FIFA Partners



FIFA World Cup Sponsors



National Supporters



Player Statistics



Group E

Denmark - Japan 1:3 (0:2)

Rustenburg / Royal Bafokeng Stadium / RSA



Denmark
10 Martin JORGENSEN
 Midfield

	1st half	2nd half	Total	Team total	Team avg
Goal(s) scored	0	0	0	1	
Attempts on/off target	0	0	0	13	
Assist(s)	0	0	0	0	
Offside(s)	0	0	0	0	
Save(s)	0	0	0	7	
Yellow card(s)	0	0	0	3	
Red card	0	0	0	0	
Foul(s) committed	0	0	0	23	
Delivery/solo runs into the attacking third	2	0	2	68	6.5
Delivery/solo runs into the penalty area	0	0	0	13	1.3
Tackles gaining the ball	0	0	0	3	0.3
Tackles not gaining the ball	0	0	0	7	0.7
Tackles suffered losing the ball	0	0	0	2	0.2
Tackles suffered not losing the ball	0	0	0	0	0.0
Clearances Completed	0	0	0	3	0.3
Clearances Attempted	0	0	0	6	0.6

Passing distribution



Direction of play →

Received passing distribution

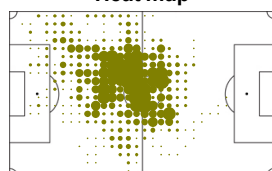


Direction of play →

Activities

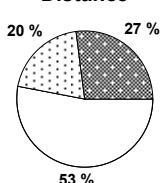
	1st half	2nd half	Total	Team total	Team avg
Total time played (mins)	33'47"	0'00"	33'47"		
Low activity time spent (%)	77%	0%	77%	83%	
Medium activity time spent (%)	12%	0%	12%	8%	
High activity time spent (%)	11%	0%	11%	9%	
Distance covered (metres)	4,068	-	4,068	107,518	9,774
Low activity distance covered (metres)	2,170	-	2,170	62,751	5,704
Medium activity distance covered (metres)	800	-	800	17,139	1,558
High activity distance covered (metres)	1,099	-	1,099	27,628	2,512
Top speed (km/h)	18.90	-	18.90	28.72	21.80
Sprints	24	-	24	994	115

Heat map



Direction of play →

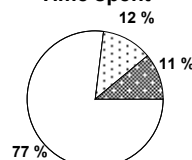
Distance



Activity



Time spent



FIFA does not vouch for the accuracy of technical statistics compiled in association with its competition results system partner.

THU 24 JUN 2010; 22:41 CET / 22:41 local time - Version 1

Page1/0

2010 FIFA World Cup South Africa™

FIFA Partners



FIFA World Cup Sponsors



National Supporters



Player Statistics



Group E

Denmark - Japan 1:3 (0:2)

Rustenburg / Royal Bafokeng Stadium / RSA



Denmark
11 Nicklas BENDTNER
 Forward

	1st half	2nd half	Total	Team total	Team avg
Goal(s) scored	0	0	0	1	
Attempts on/off target	0	0	0	13	
Assist(s)	0	0	0	0	
Offside(s)	0	0	0	0	
Save(s)	0	0	0	7	
Yellow card(s)	0	1	1	3	
Red card	0	0	0	0	
Foul(s) committed	0	3	3	23	
Delivery/solo runs into the attacking third	2	1	3	68	6.5
Delivery/solo runs into the penalty area	0	1	1	13	1.3
Tackles gaining the ball	0	0	0	3	0.3
Tackles not gaining the ball	0	0	0	7	0.7
Tackles suffered losing the ball	0	1	1	2	0.2
Tackles suffered not losing the ball	0	0	0	0	0.0
Clearances Completed	0	0	0	3	0.3
Clearances Attempted	0	0	0	6	0.6

Passing distribution



Direction of play →

Received passing distribution

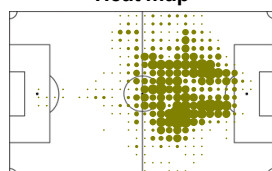


Direction of play →

Activities

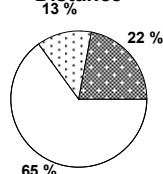
	1st half	2nd half	Total	Team total	Team avg
Total time played (mins)	47'04"	49'12"	96'16"		
Low activity time spent (%)	84%	87%	86%	83%	
Medium activity time spent (%)	7%	6%	7%	8%	
High activity time spent (%)	9%	7%	7%	9%	
Distance covered (metres)	4,764	4,160	8,924	107,518	9,774
Low activity distance covered (metres)	2,941	2,815	5,756	62,751	5,704
Medium activity distance covered (metres)	653	550	1,203	17,139	1,558
High activity distance covered (metres)	1,169	795	1,964	27,628	2,512
Top speed (km/h)	26.98	18.51	26.98	28.72	21.80
Sprints	33	23	56	994	115

Heat map



Direction of play →

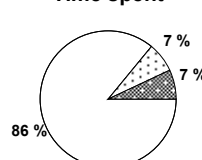
Distance



Activity



Time spent



FIFA does not vouch for the accuracy of technical statistics compiled in association with its competition results system partner.

THU 24 JUN 2010; 22:41 CET / 22:41 local time - Version 1

Page1/0

2010 FIFA World Cup South Africa™

FIFA Partners



FIFA World Cup Sponsors



National Supporters



Player Statistics



Group E

Denmark - Japan 1:3 (0:2)

Rustenburg / Royal Bafokeng Stadium / RSA



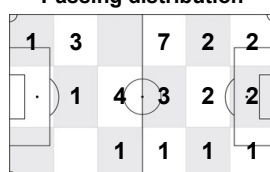
Denmark

12 Thomas KAHLENBERG

Midfield

	1st half	2nd half	Total	Team total	Team avg
Goal(s) scored	0	0	0	1	
Attempts on/off target	0	1	1	13	
Assist(s)	0	0	0	0	
Offside(s)	0	0	0	0	
Save(s)	0	0	0	7	
Yellow card(s)	0	0	0	3	
Red card	0	0	0	0	
Foul(s) committed	1	0	1	23	
Delivery/solo runs into the attacking third	1	0	1	68	6.5
Delivery/solo runs into the penalty area	2	0	2	13	1.3
Tackles gaining the ball	1	0	1	3	0.3
Tackles not gaining the ball	1	0	1	7	0.7
Tackles suffered losing the ball	0	0	0	2	0.2
Tackles suffered not losing the ball	0	0	0	0	0.0
Clearances Completed	0	0	0	3	0.3
Clearances Attempted	0	0	0	6	0.6

Passing distribution



Direction of play →

Received passing distribution

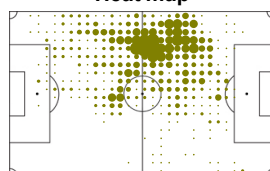


Direction of play →

Activities

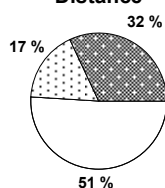
	1st half	2nd half	Total	Team total	Team avg
Total time played (mins)	47'04"	17'42"	64'46"		
Low activity time spent (%)	76%	77%	77%	83%	
Medium activity time spent (%)	11%	9%	10%	8%	
High activity time spent (%)	13%	14%	13%	9%	
Distance covered (metres)	5,952	2,017	7,969	107,518	9,774
Low activity distance covered (metres)	3,064	978	4,042	62,751	5,704
Medium activity distance covered (metres)	1,021	329	1,350	17,139	1,558
High activity distance covered (metres)	1,867	710	2,577	27,628	2,512
Top speed (km/h)	20.20	18.88	20.20	28.72	21.80
Sprints	67	22	89	994	115

Heat map

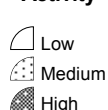


Direction of play →

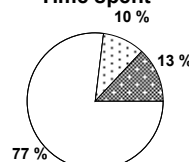
Distance



Activity



Time spent



FIFA does not vouch for the accuracy of technical statistics compiled in association with its competition results system partner.

THU 24 JUN 2010; 22:41 CET / 22:41 local time - Version 1

Page1/0

2010 FIFA World Cup South Africa™

FIFA Partners



FIFA World Cup Sponsors



National Supporters



Player Statistics



Group E

Denmark - Japan 1:3 (0:2)

Rustenburg / Royal Bafokeng Stadium / RSA



Denmark
13 Per KROLDROP
Defender

	1st half	2nd half	Total	Team total	Team avg
Goal(s) scored	0	0	0	1	
Attempts on/off target	1	0	1	13	
Assist(s)	0	0	0	0	
Offside(s)	0	0	0	0	
Save(s)	0	0	0	7	
Yellow card(s)	1	0	1	3	
Red card	0	0	0	0	
Foul(s) committed	1	0	1	23	
Delivery/solo runs into the attacking third	4	2	6	68	6.5
Delivery/solo runs into the penalty area	0	0	0	13	1.3
Tackles gaining the ball	0	0	0	3	0.3
Tackles not gaining the ball	2	0	2	7	0.7
Tackles suffered losing the ball	0	0	0	2	0.2
Tackles suffered not losing the ball	0	0	0	0	0.0
Clearances Completed	0	0	0	3	0.3
Clearances Attempted	1	0	1	6	0.6

Passing distribution



Direction of play →

Received passing distribution

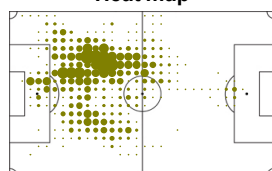


Direction of play →

Activities

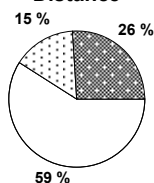
	1st half	2nd half	Total	Team total	Team avg
Total time played (mins)	47'04"	10'42"	57'46"		
Low activity time spent (%)	85%	80%	84%	83%	
Medium activity time spent (%)	7%	8%	7%	8%	
High activity time spent (%)	8%	12%	9%	9%	
Distance covered (metres)	4,853	1,157	6,010	107,518	9,774
Low activity distance covered (metres)	2,950	588	3,538	62,751	5,704
Medium activity distance covered (metres)	732	177	909	17,139	1,558
High activity distance covered (metres)	1,171	393	1,564	27,628	2,512
Top speed (km/h)	21.36	21.11	21.36	28.72	21.80
Sprints	35	20	55	994	115

Heat map



Direction of play →

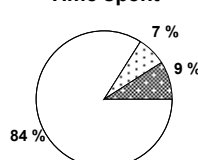
Distance



Activity



Time spent



FIFA does not vouch for the accuracy of technical statistics compiled in association with its competition results system partner.

THU 24 JUN 2010; 22:41 CET / 22:41 local time - Version 1

Page1/0

2010 FIFA World Cup South Africa™

FIFA Partners



FIFA World Cup Sponsors



National Supporters



Player Statistics



Group E

Denmark - Japan 1:3 (0:2)

Rustenburg / Royal Bafokeng Stadium / RSA



Denmark
14 Jakob POULSEN
Midfield

	1st half	2nd half	Total	Team total	Team avg
Goal(s) scored	0	0	0	1	
Attempts on/off target	0	1	1	13	
Assist(s)	0	0	0	0	
Offside(s)	0	0	0	0	
Save(s)	0	0	0	7	
Yellow card(s)	0	0	0	3	
Red card	0	0	0	0	
Foul(s) committed	0	0	0	23	
Delivery/solo runs into the attacking third	1	7	8	68	6.5
Delivery/solo runs into the penalty area	0	1	1	13	1.3
Tackles gaining the ball	0	0	0	3	0.3
Tackles not gaining the ball	0	0	0	7	0.7
Tackles suffered losing the ball	0	0	0	2	0.2
Tackles suffered not losing the ball	0	0	0	0	0.0
Clearances Completed	0	0	0	3	0.3
Clearances Attempted	0	0	0	6	0.6

Passing distribution



Direction of play →

Received passing distribution

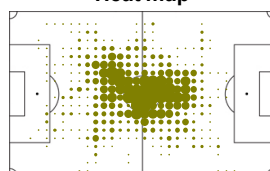


Direction of play →

Activities

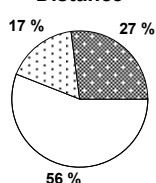
	1st half	2nd half	Total	Team total	Team avg
Total time played (mins)	13'17"	49'12"	62'29"		
Low activity time spent (%)	82%	78%	79%	83%	
Medium activity time spent (%)	8%	10%	10%	8%	
High activity time spent (%)	10%	12%	11%	9%	
Distance covered (metres)	1,608	5,720	7,328	107,518	9,774
Low activity distance covered (metres)	896	3,188	4,084	62,751	5,704
Medium activity distance covered (metres)	234	1,021	1,255	17,139	1,558
High activity distance covered (metres)	478	1,511	1,989	27,628	2,512
Top speed (km/h)	18.94	19.87	19.87	28.72	21.80
Sprints	25	62	87	994	115

Heat map



Direction of play →

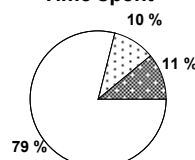
Distance



Activity



Time spent



FIFA does not vouch for the accuracy of technical statistics compiled in association with its competition results system partner.

THU 24 JUN 2010; 22:41 CET / 22:41 local time - Version 1

Page1/0

2010 FIFA World Cup South Africa™

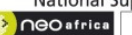
FIFA Partners



FIFA World Cup Sponsors



National Supporters



Player Statistics



Group E

Denmark - Japan 1:3 (0:2)

Rustenburg / Royal Bafokeng Stadium / RSA



Denmark
15 Simon POULSEN
 Defender

	1st half	2nd half	Total	Team total	Team avg
Goal(s) scored	0	0	0	1	
Attempts on/off target	1	0	1	13	
Assist(s)	0	0	0	0	
Offside(s)	0	0	0	0	
Save(s)	0	0	0	7	
Yellow card(s)	0	0	0	3	
Red card	0	0	0	0	
Foul(s) committed	2	0	2	23	
Delivery/solo runs into the attacking third	5	2	7	68	6.5
Delivery/solo runs into the penalty area	2	0	2	13	1.3
Tackles gaining the ball	0	0	0	3	0.3
Tackles not gaining the ball	1	0	1	7	0.7
Tackles suffered losing the ball	1	0	1	2	0.2
Tackles suffered not losing the ball	0	0	0	0	0.0
Clearances Completed	3	0	3	3	0.3
Clearances Attempted	3	0	3	6	0.6

Passing distribution



Direction of play →

Received passing distribution

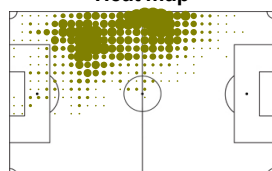


Direction of play →

Activities

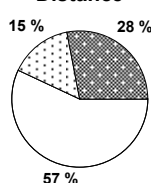
	1st half	2nd half	Total	Team total	Team avg
Total time played (mins)	47'04"	49'12"	96'16"		
Low activity time spent (%)	81%	82%	81%	83%	
Medium activity time spent (%)	9%	8%	8%	8%	
High activity time spent (%)	10%	10%	11%	9%	
Distance covered (metres)	5,426	5,195	10,621	107,518	9,774
Low activity distance covered (metres)	2,922	3,114	6,036	62,751	5,704
Medium activity distance covered (metres)	925	715	1,640	17,139	1,558
High activity distance covered (metres)	1,578	1,366	2,944	27,628	2,512
Top speed (km/h)	22.05	26.61	26.61	28.72	21.80
Sprints	75	66	141	994	115

Heat map



Direction of play →

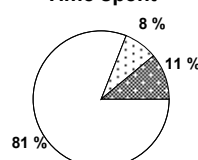
Distance



Activity



Time spent



FIFA does not vouch for the accuracy of technical statistics compiled in association with its competition results system partner.

THU 24 JUN 2010; 22:41 CET / 22:41 local time - Version 1

Page1/0

2010 FIFA World Cup South Africa™

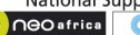
FIFA Partners



FIFA World Cup Sponsors



National Supporters



Player Statistics



Group E

Denmark - Japan 1:3 (0:2)

Rustenburg / Royal Bafokeng Stadium / RSA



Denmark
18 Soren LARSEN
Forward

	1st half	2nd half	Total	Team total	Team avg
Goal(s) scored	0	0	0	1	
Attempts on/off target	0	2	2	13	
Assist(s)	0	0	0	0	
Offside(s)	0	0	0	0	
Save(s)	0	0	0	7	
Yellow card(s)	0	0	0	3	
Red card	0	0	0	0	
Foul(s) committed	0	3	3	23	
Delivery/solo runs into the attacking third	-	1	1	68	6.5
Delivery/solo runs into the penalty area	-	1	1	13	1.3
Tackles gaining the ball	-	0	0	3	0.3
Tackles not gaining the ball	-	1	1	7	0.7
Tackles suffered losing the ball	-	0	0	2	0.2
Tackles suffered not losing the ball	-	0	0	0	0.0
Clearances Completed	-	0	0	3	0.3
Clearances Attempted	-	0	0	6	0.6

Passing distribution



Direction of play →

Received passing distribution

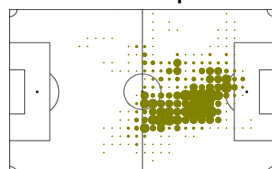


Direction of play →

Activities

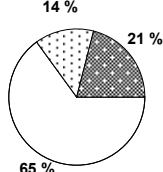
	1st half	2nd half	Total	Team total	Team avg
Total time played (mins)	0'00"	38'30"	38'30"		
Low activity time spent (%)	0%	86%	86%	83%	
Medium activity time spent (%)	0%	7%	7%	8%	
High activity time spent (%)	0%	7%	7%	9%	
Distance covered (metres)	-	3,537	3,537	107,518	9,774
Low activity distance covered (metres)	-	2,282	2,282	62,751	5,704
Medium activity distance covered (metres)	-	498	498	17,139	1,558
High activity distance covered (metres)	-	757	757	27,628	2,512
Top speed (km/h)	-	19.05	19.05	28.72	21.80
Sprints	-	39	39	994	115

Heat map

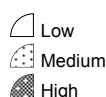


Direction of play →

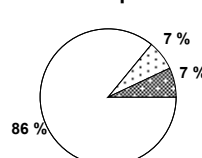
Distance



Activity



Time spent



FIFA does not vouch for the accuracy of technical statistics compiled in association with its competition results system partner.

THU 24 JUN 2010; 22:41 CET / 22:41 local time - Version 1

Page1/0

2010 FIFA World Cup South Africa™

FIFA Partners



FIFA World Cup Sponsors



National Supporters



Player Statistics



Group E

Denmark - Japan 1:3 (0:2)

Rustenburg / Royal Bafokeng Stadium / RSA



Denmark
19 Dennis ROMMEDAHL
Forward

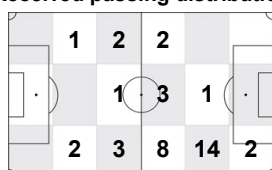
	1st half	2nd half	Total	Team total	Team avg
Goal(s) scored	0	0	0	1	
Attempts on/off target	0	0	0	13	
Assist(s)	0	0	0	0	
Offside(s)	0	0	0	0	
Save(s)	0	0	0	7	
Yellow card(s)	0	0	0	3	
Red card	0	0	0	0	
Foul(s) committed	1	2	3	23	
Delivery/solo runs into the attacking third	1	1	2	68	6.5
Delivery/solo runs into the penalty area	0	0	0	13	1.3
Tackles gaining the ball	0	1	1	3	0.3
Tackles not gaining the ball	1	0	1	7	0.7
Tackles suffered losing the ball	0	0	0	2	0.2
Tackles suffered not losing the ball	0	0	0	0	0.0
Clearances Completed	0	0	0	3	0.3
Clearances Attempted	0	1	1	6	0.6

Passing distribution



Direction of play →

Received passing distribution

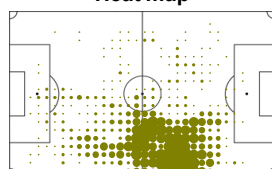


Direction of play →

Activities

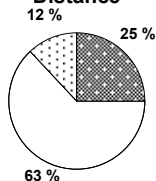
	1st half	2nd half	Total	Team total	Team avg
Total time played (mins)	47'04"	49'12"	96'16"		
Low activity time spent (%)	86%	87%	87%	83%	
Medium activity time spent (%)	7%	5%	6%	8%	
High activity time spent (%)	7%	8%	7%	9%	
Distance covered (metres)	4,409	4,595	9,004	107,518	9,774
Low activity distance covered (metres)	2,848	2,849	5,697	62,751	5,704
Medium activity distance covered (metres)	572	552	1,124	17,139	1,558
High activity distance covered (metres)	989	1,193	2,182	27,628	2,512
Top speed (km/h)	18.37	19.25	19.25	28.72	21.80
Sprints	34	56	90	994	115

Heat map



Direction of play →

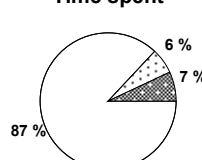
Distance



Activity



Time spent



FIFA does not vouch for the accuracy of technical statistics compiled in association with its competition results system partner.

THU 24 JUN 2010; 22:41 CET / 22:41 local time - Version 1

Page1/0

2010 FIFA World Cup South Africa™

FIFA Partners



FIFA World Cup Sponsors



National Supporters



Player Statistics



Group E

Denmark - Japan 1:3 (0:2)

Rustenburg / Royal Bafokeng Stadium / RSA



Denmark
21 Christian ERIKSEN
Midfield

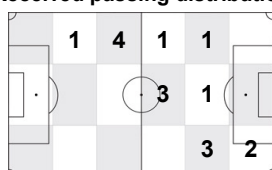
	1st half	2nd half	Total	Team total	Team avg
Goal(s) scored	0	0	0	1	
Attempts on/off target	0	1	1	13	
Assist(s)	0	0	0	0	
Offside(s)	0	0	0	0	
Save(s)	0	0	0	7	
Yellow card(s)	0	0	0	3	
Red card	0	0	0	0	
Foul(s) committed	0	0	0	23	
Delivery/solo runs into the attacking third	-	2	2	68	6.5
Delivery/solo runs into the penalty area	-	0	0	13	1.3
Tackles gaining the ball	-	0	0	3	0.3
Tackles not gaining the ball	-	0	0	7	0.7
Tackles suffered losing the ball	-	0	0	2	0.2
Tackles suffered not losing the ball	-	0	0	0	0.0
Clearances Completed	-	0	0	3	0.3
Clearances Attempted	-	0	0	6	0.6

Passing distribution



Direction of play →

Received passing distribution

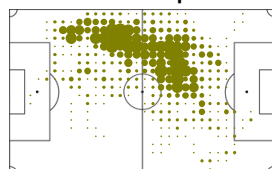


Direction of play →

Activities

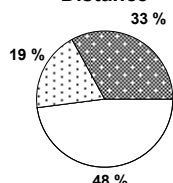
	1st half	2nd half	Total	Team total	Team avg
Total time played (mins)	0'00"	31'30"	31'30"		
Low activity time spent (%)	0%	74%	74%	83%	
Medium activity time spent (%)	0%	13%	13%	8%	
High activity time spent (%)	0%	13%	13%	9%	
Distance covered (metres)	-	3,839	3,839	107,518	9,774
Low activity distance covered (metres)	-	1,848	1,848	62,751	5,704
Medium activity distance covered (metres)	-	732	732	17,139	1,558
High activity distance covered (metres)	-	1,259	1,259	27,628	2,512
Top speed (km/h)	-	28.72	28.72	28.72	21.80
Sprints	-	48	48	994	115

Heat map



Direction of play →

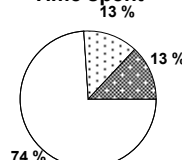
Distance



Activity



Time spent



FIFA does not vouch for the accuracy of technical statistics compiled in association with its competition results system partner.

THU 24 JUN 2010; 22:41 CET / 22:41 local time - Version 1

Page1/0

2010 FIFA World Cup South Africa™

FIFA Partners



FIFA World Cup Sponsors



National Supporters



