

Player Statistics



Quarter-final

Netherlands - Brazil 2:1 (0:1)

Nelson Mandela Bay / Port Elizabeth Stadium / RSA



Netherlands
1 Maarten STEKELENBURG
 Goalkeeper

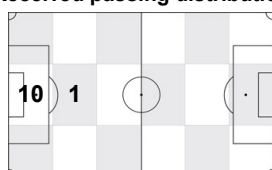
	1st half	2nd half	Total	Team total	Team avg
Goal(s) scored	0	0	0	2	
Attempts on/off target	0	0	0	9	
Assist(s)	0	0	0	1	
Offside(s)	0	0	0	2	
Save(s)	2	1	3	3	
Yellow card(s)	0	0	0	4	
Red card	0	0	0	0	
Foul(s) committed	0	0	0	20	
Delivery/solo runs into the attacking third	0	2	2	37	3.5
Delivery/solo runs into the penalty area	0	1	1	9	0.8
Tackles gaining the ball	0	0	0	0	0.0
Tackles not gaining the ball	0	0	0	4	0.4
Tackles suffered losing the ball	0	0	0	3	0.3
Tackles suffered not losing the ball	0	0	0	2	0.2
Clearances Completed	0	0	0	4	0.4
Clearances Attempted	0	0	0	15	1.5

Passing distribution



Direction of play →

Received passing distribution

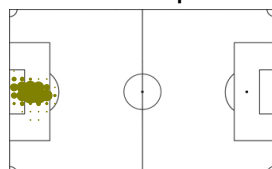


Direction of play →

Activities

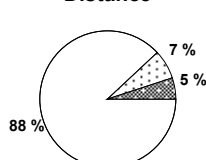
	1st half	2nd half	Total	Team total	Team avg
Total time played (mins)	46'11"	48'03"	94'14"		
Low activity time spent (%)	99%	97%	98%	86%	
Medium activity time spent (%)	1%	2%	1%	7%	
High activity time spent (%)	0%	1%	1%	7%	
Distance covered (metres)	1,585	2,264	3,849	97,688	9,388
Low activity distance covered (metres)	1,455	1,942	3,397	61,457	5,808
Medium activity distance covered (metres)	71	187	258	13,601	1,335
High activity distance covered (metres)	59	135	194	22,630	2,244
Top speed (km/h)	13.75	14.36	14.36	26.39	22.50
Sprints	0	0	0	957	148

Heat map



Direction of play →

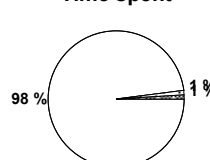
Distance



Activity



Time spent



FIFA does not vouch for the accuracy of technical statistics compiled in association with its competition results system partner.

SAT 3 JUL 2010; 15:25 CET / 15:25 local time - Version 1

2010 FIFA World Cup South Africa™

FIFA Partners



FIFA World Cup Sponsors



National Supporters



Player Statistics



Quarter-final

Netherlands - Brazil 2:1 (0:1)

Nelson Mandela Bay / Port Elizabeth Stadium / RSA



Netherlands
2 Gregory VAN DER WIEL
 Defender

	1st half	2nd half	Total	Team total	Team avg
Goal(s) scored	0	0	0	2	
Attempts on/off target	0	0	0	9	
Assist(s)	0	0	0	1	
Offside(s)	0	0	0	2	
Save(s)	0	0	0	3	
Yellow card(s)	0	1	1	4	
Red card	0	0	0	0	
Foul(s) committed	0	2	2	20	
Delivery/solo runs into the attacking third	2	3	5	37	3.5
Delivery/solo runs into the penalty area	0	1	1	9	0.8
Tackles gaining the ball	0	0	0	0	0.0
Tackles not gaining the ball	0	0	0	4	0.4
Tackles suffered losing the ball	0	0	0	3	0.3
Tackles suffered not losing the ball	0	0	0	2	0.2
Clearances Completed	0	0	0	4	0.4
Clearances Attempted	0	1	1	15	1.5

Passing distribution



Direction of play →

Received passing distribution

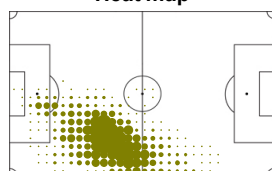


Direction of play →

Activities

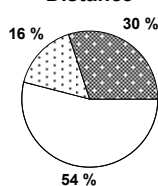
	1st half	2nd half	Total	Team total	Team avg
Total time played (mins)	46'11"	48'03"	94'14"		
Low activity time spent (%)	81%	80%	80%	86%	
Medium activity time spent (%)	8%	9%	9%	7%	
High activity time spent (%)	11%	11%	11%	7%	
Distance covered (metres)	4,958	5,329	10,287	97,688	9,388
Low activity distance covered (metres)	2,782	2,761	5,543	61,457	5,808
Medium activity distance covered (metres)	748	878	1,626	13,601	1,335
High activity distance covered (metres)	1,428	1,690	3,118	22,630	2,244
Top speed (km/h)	22.60	21.88	22.60	26.39	22.50
Sprints	60	70	130	957	148

Heat map

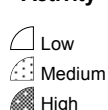


Direction of play →

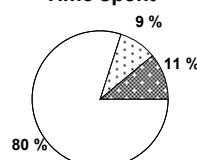
Distance



Activity



Time spent



FIFA does not vouch for the accuracy of technical statistics compiled in association with its competition results system partner.

SAT 3 JUL 2010; 15:25 CET / 15:25 local time - Version 1

Page1/0

2010 FIFA World Cup South Africa™

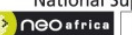
FIFA Partners



FIFA World Cup Sponsors



National Supporters



Player Statistics



Quarter-final

Netherlands - Brazil 2:1 (0:1)

Nelson Mandela Bay / Port Elizabeth Stadium / RSA



Netherlands
3 John HEITINGA
 Defender

	1st half	2nd half	Total	Team total	Team avg
Goal(s) scored	0	0	0	2	
Attempts on/off target	0	0	0	9	
Assist(s)	0	0	0	1	
Offside(s)	0	0	0	2	
Save(s)	0	0	0	3	
Yellow card(s)	1	0	1	4	
Red card	0	0	0	0	
Foul(s) committed	1	0	1	20	
Delivery/solo runs into the attacking third	2	0	2	37	3.5
Delivery/solo runs into the penalty area	0	0	0	9	0.8
Tackles gaining the ball	0	0	0	0	0.0
Tackles not gaining the ball	1	0	1	4	0.4
Tackles suffered losing the ball	0	0	0	3	0.3
Tackles suffered not losing the ball	0	0	0	2	0.2
Clearances Completed	2	0	2	4	0.4
Clearances Attempted	3	2	5	15	1.5

Passing distribution



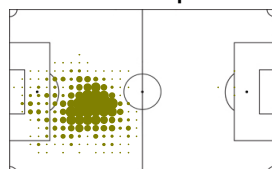
Received passing distribution



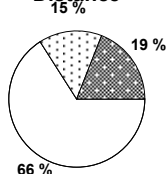
Activities

	1st half	2nd half	Total	Team total	Team avg
Total time played (mins)	46'11"	48'03"	94'14"		
Low activity time spent (%)	88%	87%	87%	86%	
Medium activity time spent (%)	7%	7%	7%	7%	
High activity time spent (%)	5%	6%	6%	7%	
Distance covered (metres)	4,239	4,133	8,372	97,688	9,388
Low activity distance covered (metres)	2,793	2,721	5,514	61,457	5,808
Medium activity distance covered (metres)	685	595	1,280	13,601	1,335
High activity distance covered (metres)	761	817	1,578	22,630	2,244
Top speed (km/h)	17.80	16.90	17.80	26.39	22.50
Sprints	27	24	51	957	148

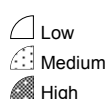
Heat map



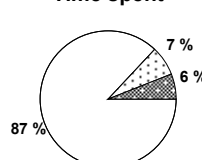
Distance



Activity



Time spent



FIFA does not vouch for the accuracy of technical statistics compiled in association with its competition results system partner.

SAT 3 JUL 2010; 15:25 CET / 15:25 local time - Version 1

Page1/0

2010 FIFA World Cup South Africa™

FIFA Partners



FIFA World Cup Sponsors



National Supporters



Player Statistics



Quarter-final

Netherlands - Brazil 2:1 (0:1)

Nelson Mandela Bay / Port Elizabeth Stadium / RSA



Netherlands
5 Giovanni VAN BRONCKHORST
 Defender

	1st half	2nd half	Total	Team total	Team avg
Goal(s) scored	0	0	0	2	
Attempts on/off target	0	0	0	9	
Assist(s)	0	0	0	1	
Offside(s)	0	0	0	2	
Save(s)	0	0	0	3	
Yellow card(s)	0	0	0	4	
Red card	0	0	0	0	
Foul(s) committed	1	0	1	20	
Delivery/solo runs into the attacking third	1	0	1	37	3.5
Delivery/solo runs into the penalty area	0	0	0	9	0.8
Tackles gaining the ball	0	0	0	0	0.0
Tackles not gaining the ball	0	0	0	4	0.4
Tackles suffered losing the ball	0	0	0	3	0.3
Tackles suffered not losing the ball	0	0	0	2	0.2
Clearances Completed	0	0	0	4	0.4
Clearances Attempted	2	1	3	15	1.5

Passing distribution



Direction of play →

Received passing distribution

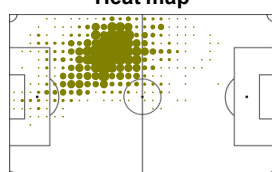


Direction of play →

Activities

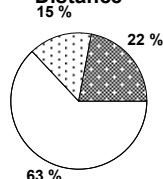
	1st half	2nd half	Total	Team total	Team avg
Total time played (mins)	46'11"	48'03"	94'14"		
Low activity time spent (%)	84%	86%	85%	86%	
Medium activity time spent (%)	8%	7%	8%	7%	
High activity time spent (%)	8%	7%	7%	7%	
Distance covered (metres)	4,585	4,779	9,364	97,688	9,388
Low activity distance covered (metres)	2,927	2,971	5,898	61,457	5,808
Medium activity distance covered (metres)	756	675	1,431	13,601	1,335
High activity distance covered (metres)	902	1,133	2,035	22,630	2,244
Top speed (km/h)	22.53	21.67	22.53	26.39	22.50
Sprints	35	47	82	957	148

Heat map

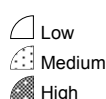


Direction of play →

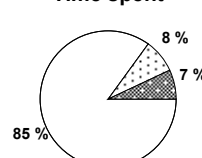
Distance



Activity



Time spent



FIFA does not vouch for the accuracy of technical statistics compiled in association with its competition results system partner.

SAT 3 JUL 2010; 15:25 CET / 15:25 local time - Version 1

Page1/0

2010 FIFA World Cup South Africa™

FIFA Partners



FIFA World Cup Sponsors



National Supporters



Player Statistics



Quarter-final

Netherlands - Brazil 2:1 (0:1)

Nelson Mandela Bay / Port Elizabeth Stadium / RSA



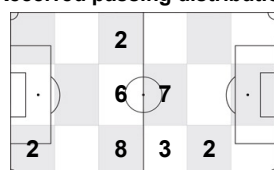
Netherlands
6 Mark VAN BOMMEL
 Midfield

	1st half	2nd half	Total	Team total	Team avg
Goal(s) scored	0	0	0	2	
Attempts on/off target	0	0	0	9	
Assist(s)	0	0	0	1	
Offside(s)	0	0	0	2	
Save(s)	0	0	0	3	
Yellow card(s)	0	0	0	4	
Red card	0	0	0	0	
Foul(s) committed	1	3	4	20	
Delivery/solo runs into the attacking third	2	3	5	37	3.5
Delivery/solo runs into the penalty area	1	0	1	9	0.8
Tackles gaining the ball	0	0	0	0	0.0
Tackles not gaining the ball	0	0	0	4	0.4
Tackles suffered losing the ball	0	0	0	3	0.3
Tackles suffered not losing the ball	0	0	0	2	0.2
Clearances Completed	0	0	0	4	0.4
Clearances Attempted	0	0	0	15	1.5

Passing distribution



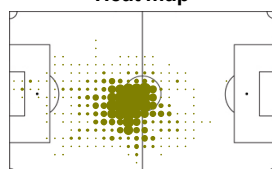
Received passing distribution



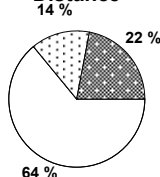
Activities

	1st half	2nd half	Total	Team total	Team avg
Total time played (mins)	46'11"	48'03"	94'14"		
Low activity time spent (%)	87%	87%	87%	86%	
Medium activity time spent (%)	6%	6%	6%	7%	
High activity time spent (%)	7%	7%	7%	7%	
Distance covered (metres)	4,102	4,397	8,499	97,688	9,388
Low activity distance covered (metres)	2,743	2,719	5,462	61,457	5,808
Medium activity distance covered (metres)	574	614	1,188	13,601	1,335
High activity distance covered (metres)	785	1,064	1,849	22,630	2,244
Top speed (km/h)	19.87	19.57	19.87	26.39	22.50
Sprints	32	43	75	957	148

Heat map



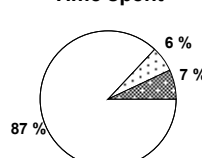
Distance



Activity



Time spent



FIFA does not vouch for the accuracy of technical statistics compiled in association with its competition results system partner.

SAT 3 JUL 2010; 15:25 CET / 15:25 local time - Version 1

Page1/0

2010 FIFA World Cup South Africa™

FIFA Partners



FIFA World Cup Sponsors



National Supporters



Player Statistics



Quarter-final

Netherlands - Brazil 2:1 (0:1)

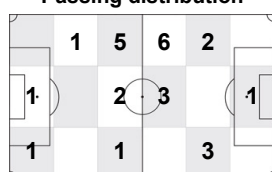
Nelson Mandela Bay / Port Elizabeth Stadium / RSA



Netherlands
7 Dirk KUYT
Forward

	1st half	2nd half	Total	Team total	Team avg
Goal(s) scored	0	0	0	2	
Attempts on/off target	1	0	1	9	
Assist(s)	0	1	1	1	
Offside(s)	1	0	1	2	
Save(s)	0	0	0	3	
Yellow card(s)	0	0	0	4	
Red card	0	0	0	0	
Foul(s) committed	0	1	1	20	
Delivery/solo runs into the attacking third	5	0	5	37	3.5
Delivery/solo runs into the penalty area	1	0	1	9	0.8
Tackles gaining the ball	0	0	0	0	0.0
Tackles not gaining the ball	0	0	0	4	0.4
Tackles suffered losing the ball	0	1	1	3	0.3
Tackles suffered not losing the ball	0	0	0	2	0.2
Clearances Completed	1	1	2	4	0.4
Clearances Attempted	1	1	2	15	1.5

Passing distribution



Direction of play →

Received passing distribution

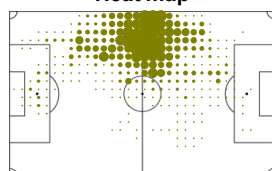


Direction of play →

Activities

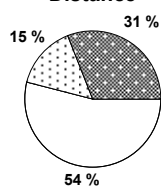
	1st half	2nd half	Total	Team total	Team avg
Total time played (mins)	46'11"	48'03"	94'14"		
Low activity time spent (%)	80%	81%	81%	86%	
Medium activity time spent (%)	9%	8%	9%	7%	
High activity time spent (%)	11%	11%	10%	7%	
Distance covered (metres)	5,055	5,334	10,389	97,688	9,388
Low activity distance covered (metres)	2,797	2,836	5,633	61,457	5,808
Medium activity distance covered (metres)	736	825	1,561	13,601	1,335
High activity distance covered (metres)	1,522	1,673	3,195	22,630	2,244
Top speed (km/h)	21.36	26.39	26.39	26.39	22.50
Sprints	51	78	129	957	148

Heat map



Direction of play →

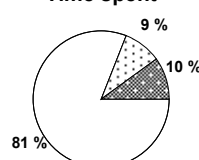
Distance



Activity



Time spent



FIFA does not vouch for the accuracy of technical statistics compiled in association with its competition results system partner.

SAT 3 JUL 2010; 15:25 CET / 15:25 local time - Version 1

Page1/0

2010 FIFA World Cup South Africa™

FIFA Partners



FIFA World Cup Sponsors



National Supporters



Player Statistics



Quarter-final

Netherlands - Brazil 2:1 (0:1)

Nelson Mandela Bay / Port Elizabeth Stadium / RSA



Netherlands
8 Nigel DE JONG
 Midfield

	1st half	2nd half	Total	Team total	Team avg
Goal(s) scored	0	0	0	2	
Attempts on/off target	0	0	0	9	
Assist(s)	0	0	0	1	
Offside(s)	0	0	0	2	
Save(s)	0	0	0	3	
Yellow card(s)	0	1	1	4	
Red card	0	0	0	0	
Foul(s) committed	0	3	3	20	
Delivery/solo runs into the attacking third	1	2	3	37	3.5
Delivery/solo runs into the penalty area	0	0	0	9	0.8
Tackles gaining the ball	0	0	0	0	0.0
Tackles not gaining the ball	2	0	2	4	0.4
Tackles suffered losing the ball	0	0	0	3	0.3
Tackles suffered not losing the ball	0	0	0	2	0.2
Clearances Completed	0	0	0	4	0.4
Clearances Attempted	0	0	0	15	1.5

Passing distribution



Direction of play →

Received passing distribution

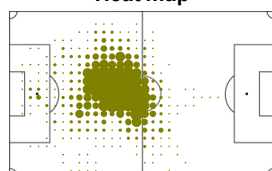


Direction of play →

Activities

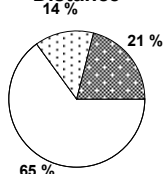
	1st half	2nd half	Total	Team total	Team avg
Total time played (mins)	46'11"	48'03"	94'14"		
Low activity time spent (%)	86%	85%	86%	86%	
Medium activity time spent (%)	7%	7%	7%	7%	
High activity time spent (%)	7%	8%	7%	7%	
Distance covered (metres)	4,526	4,704	9,230	97,688	9,388
Low activity distance covered (metres)	3,011	2,975	5,986	61,457	5,808
Medium activity distance covered (metres)	639	688	1,327	13,601	1,335
High activity distance covered (metres)	876	1,041	1,917	22,630	2,244
Top speed (km/h)	18.51	19.23	19.23	26.39	22.50
Sprints	36	41	77	957	148

Heat map

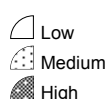


Direction of play →

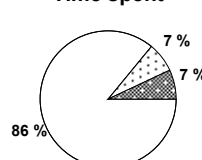
Distance



Activity



Time spent



FIFA does not vouch for the accuracy of technical statistics compiled in association with its competition results system partner.

SAT 3 JUL 2010; 15:25 CET / 15:25 local time - Version 1

Page1/0

2010 FIFA World Cup South Africa™

FIFA Partners



FIFA World Cup Sponsors



National Supporters



Player Statistics



Quarter-final

Netherlands - Brazil 2:1 (0:1)

Nelson Mandela Bay / Port Elizabeth Stadium / RSA



Netherlands
9 Robin VAN PERSIE
 Forward

	1st half	2nd half	Total	Team total	Team avg
Goal(s) scored	0	0	0	2	
Attempts on/off target	1	2	3	9	
Assist(s)	0	0	0	1	
Offside(s)	0	1	1	2	
Save(s)	0	0	0	3	
Yellow card(s)	0	0	0	4	
Red card	0	0	0	0	
Foul(s) committed	1	0	1	20	
Delivery/solo runs into the attacking third	1	1	2	37	3.5
Delivery/solo runs into the penalty area	1	0	1	9	0.8
Tackles gaining the ball	0	0	0	0	0.0
Tackles not gaining the ball	0	0	0	4	0.4
Tackles suffered losing the ball	1	0	1	3	0.3
Tackles suffered not losing the ball	0	0	0	2	0.2
Clearances Completed	0	0	0	4	0.4
Clearances Attempted	0	0	0	15	1.5

Passing distribution



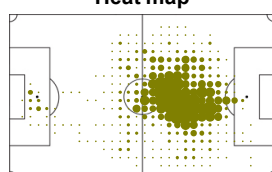
Received passing distribution



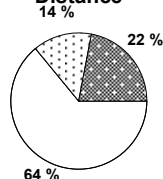
Activities

	1st half	2nd half	Total	Team total	Team avg
Total time played (mins)	46'11"	39'47"	85'58"		
Low activity time spent (%)	85%	86%	86%	86%	
Medium activity time spent (%)	7%	7%	7%	7%	
High activity time spent (%)	8%	7%	7%	7%	
Distance covered (metres)	4,558	4,037	8,595	97,688	9,388
Low activity distance covered (metres)	2,918	2,560	5,478	61,457	5,808
Medium activity distance covered (metres)	630	548	1,178	13,601	1,335
High activity distance covered (metres)	1,010	930	1,940	22,630	2,244
Top speed (km/h)	21.58	22.56	22.56	26.39	22.50
Sprints	52	36	88	957	148

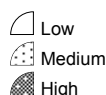
Heat map



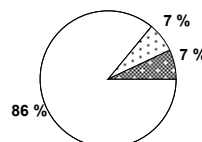
Distance



Activity



Time spent



FIFA does not vouch for the accuracy of technical statistics compiled in association with its competition results system partner.

SAT 3 JUL 2010; 15:25 CET / 15:25 local time - Version 1

Page1/0

2010 FIFA World Cup South Africa™

FIFA Partners



FIFA World Cup Sponsors



National Supporters



Player Statistics



Quarter-final

Netherlands - Brazil 2:1 (0:1)

Nelson Mandela Bay / Port Elizabeth Stadium / RSA



Netherlands
10 Wesley SNEIJDER
Midfield

	1st half	2nd half	Total	Team total	Team avg
Goal(s) scored	0	2	2	2	
Attempts on/off target	1	4	5	9	
Assist(s)	0	0	0	1	
Offside(s)	0	0	0	2	
Save(s)	0	0	0	3	
Yellow card(s)	0	0	0	4	
Red card	0	0	0	0	
Foul(s) committed	3	1	4	20	
Delivery/solo runs into the attacking third	1	4	5	37	3.5
Delivery/solo runs into the penalty area	1	2	3	9	0.8
Tackles gaining the ball	0	0	0	0	0.0
Tackles not gaining the ball	0	0	0	4	0.4
Tackles suffered losing the ball	0	0	0	3	0.3
Tackles suffered not losing the ball	0	1	1	2	0.2
Clearances Completed	0	0	0	4	0.4
Clearances Attempted	0	0	0	15	1.5

Passing distribution



Direction of play →

Received passing distribution

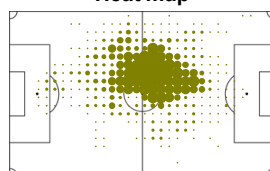


Direction of play →

Activities

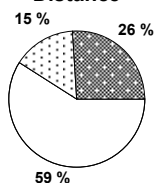
	1st half	2nd half	Total	Team total	Team avg
Total time played (mins)	46'11"	48'03"	94'14"		
Low activity time spent (%)	84%	82%	83%	86%	
Medium activity time spent (%)	8%	8%	8%	7%	
High activity time spent (%)	8%	10%	9%	7%	
Distance covered (metres)	4,616	5,087	9,703	97,688	9,388
Low activity distance covered (metres)	2,789	2,907	5,696	61,457	5,808
Medium activity distance covered (metres)	654	830	1,484	13,601	1,335
High activity distance covered (metres)	1,173	1,349	2,522	22,630	2,244
Top speed (km/h)	21.65	23.67	23.67	26.39	22.50
Sprints	59	65	124	957	148

Heat map



Direction of play →

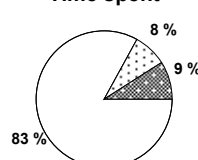
Distance



Activity



Time spent



FIFA does not vouch for the accuracy of technical statistics compiled in association with its competition results system partner.

SAT 3 JUL 2010; 15:25 CET / 15:25 local time - Version 1

Page1/0

2010 FIFA World Cup South Africa™

FIFA Partners



FIFA World Cup Sponsors



National Supporters



Player Statistics



Quarter-final

Netherlands - Brazil 2:1 (0:1)

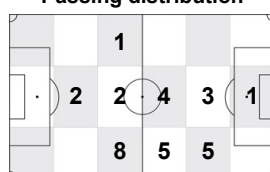
Nelson Mandela Bay / Port Elizabeth Stadium / RSA



Netherlands
11 Arjen ROBBEN
 Forward

	1st half	2nd half	Total	Team total	Team avg
Goal(s) scored	0	0	0	2	
Attempts on/off target	0	0	0	9	
Assist(s)	0	0	0	1	
Offside(s)	0	0	0	2	
Save(s)	0	0	0	3	
Yellow card(s)	0	0	0	4	
Red card	0	0	0	0	
Foul(s) committed	0	1	1	20	
Delivery/solo runs into the attacking third	3	4	7	37	3.5
Delivery/solo runs into the penalty area	0	1	1	9	0.8
Tackles gaining the ball	0	0	0	0	0.0
Tackles not gaining the ball	0	0	0	4	0.4
Tackles suffered losing the ball	0	1	1	3	0.3
Tackles suffered not losing the ball	1	0	1	2	0.2
Clearances Completed	0	0	0	4	0.4
Clearances Attempted	0	0	0	15	1.5

Passing distribution



Direction of play →

Received passing distribution

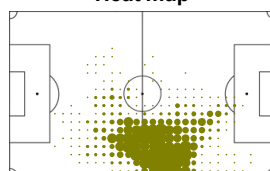


Direction of play →

Activities

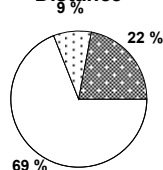
	1st half	2nd half	Total	Team total	Team avg
Total time played (mins)	46'11"	48'03"	94'14"		
Low activity time spent (%)	89%	88%	89%	86%	
Medium activity time spent (%)	4%	5%	5%	7%	
High activity time spent (%)	7%	7%	6%	7%	
Distance covered (metres)	4,595	4,924	9,519	97,688	9,388
Low activity distance covered (metres)	3,292	3,269	6,561	61,457	5,808
Medium activity distance covered (metres)	383	507	890	13,601	1,335
High activity distance covered (metres)	920	1,148	2,068	22,630	2,244
Top speed (km/h)	22.52	25.21	25.21	26.39	22.50
Sprints	42	61	103	957	148

Heat map

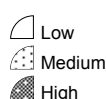


Direction of play →

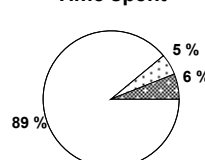
Distance



Activity



Time spent



FIFA does not vouch for the accuracy of technical statistics compiled in association with its competition results system partner.

SAT 3 JUL 2010; 15:25 CET / 15:25 local time - Version 1

2010 FIFA World Cup South Africa™

FIFA Partners



FIFA World Cup Sponsors



National Supporters



Player Statistics



Quarter-final

Netherlands - Brazil 2:1 (0:1)

Nelson Mandela Bay / Port Elizabeth Stadium / RSA



Netherlands
13 Andre OOIJER
 Defender

	1st half	2nd half	Total	Team total	Team avg
Goal(s) scored	0	0	0	2	
Attempts on/off target	0	0	0	9	
Assist(s)	0	0	0	1	
Offside(s)	0	0	0	2	
Save(s)	0	0	0	3	
Yellow card(s)	0	1	1	4	
Red card	0	0	0	0	
Foul(s) committed	2	0	2	20	
Delivery/solo runs into the attacking third	0	0	0	37	3.5
Delivery/solo runs into the penalty area	0	0	0	9	0.8
Tackles gaining the ball	0	0	0	0	0.0
Tackles not gaining the ball	1	0	1	4	0.4
Tackles suffered losing the ball	0	0	0	3	0.3
Tackles suffered not losing the ball	0	0	0	2	0.2
Clearances Completed	0	0	0	4	0.4
Clearances Attempted	2	2	4	15	1.5

Passing distribution



Direction of play →

Received passing distribution

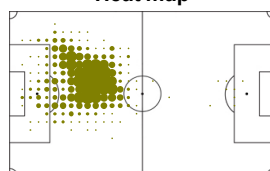


Direction of play →

Activities

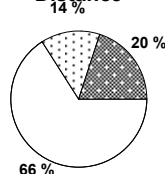
	1st half	2nd half	Total	Team total	Team avg
Total time played (mins)	46'11"	48'03"	94'14"		
Low activity time spent (%)	86%	88%	87%	86%	
Medium activity time spent (%)	8%	6%	7%	7%	
High activity time spent (%)	6%	6%	6%	7%	
Distance covered (metres)	4,451	4,261	8,712	97,688	9,388
Low activity distance covered (metres)	2,932	2,853	5,785	61,457	5,808
Medium activity distance covered (metres)	655	576	1,231	13,601	1,335
High activity distance covered (metres)	864	832	1,696	22,630	2,244
Top speed (km/h)	21.69	20.83	21.69	26.39	22.50
Sprints	34	39	73	957	148

Heat map



Direction of play →

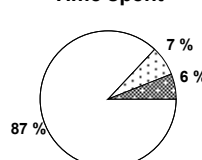
Distance



Activity



Time spent



FIFA does not vouch for the accuracy of technical statistics compiled in association with its competition results system partner.

SAT 3 JUL 2010; 15:25 CET / 15:25 local time - Version 1

Page1/0

2010 FIFA World Cup South Africa™

FIFA Partners



FIFA World Cup Sponsors



National Supporters



Player Statistics



Quarter-final

Netherlands - Brazil 2:1 (0:1)

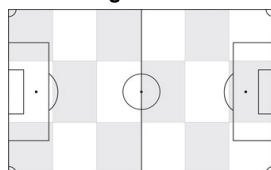
Nelson Mandela Bay / Port Elizabeth Stadium / RSA



Netherlands
21 Klaas Jan HUNTELAAR
 Forward

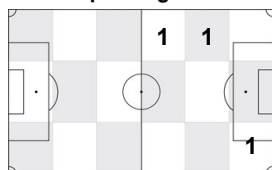
	1st half	2nd half	Total	Team total	Team avg
Goal(s) scored	0	0	0	2	
Attempts on/off target	0	0	0	9	
Assist(s)	0	0	0	1	
Offside(s)	0	0	0	2	
Save(s)	0	0	0	3	
Yellow card(s)	0	0	0	4	
Red card	0	0	0	0	
Foul(s) committed	0	0	0	20	
Delivery/solo runs into the attacking third	-	0	0	37	3.5
Delivery/solo runs into the penalty area	-	0	0	9	0.8
Tackles gaining the ball	-	0	0	0	0.0
Tackles not gaining the ball	-	0	0	4	0.4
Tackles suffered losing the ball	-	0	0	3	0.3
Tackles suffered not losing the ball	-	0	0	2	0.2
Clearances Completed	-	0	0	4	0.4
Clearances Attempted	-	0	0	15	1.5

Passing distribution



Direction of play →

Received passing distribution

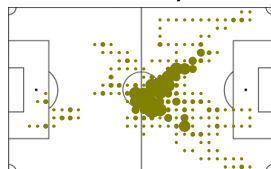


Direction of play →

Activities

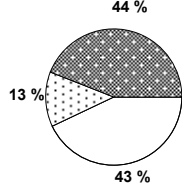
	1st half	2nd half	Total	Team total	Team avg
Total time played (mins)	0'00"	8'16"	8'16"		
Low activity time spent (%)	0%	73%	73%	86%	
Medium activity time spent (%)	0%	8%	8%	7%	
High activity time spent (%)	0%	19%	19%	7%	
Distance covered (metres)	-	1,169	1,169	97,688	9,388
Low activity distance covered (metres)	-	504	504	61,457	5,808
Medium activity distance covered (metres)	-	147	147	13,601	1,335
High activity distance covered (metres)	-	518	518	22,630	2,244
Top speed (km/h)	-	25.99	25.99	26.39	22.50
Sprints	-	25	25	957	148

Heat map

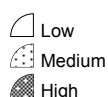


Direction of play →

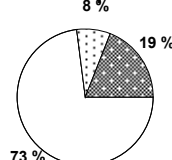
Distance



Activity



Time spent



FIFA does not vouch for the accuracy of technical statistics compiled in association with its competition results system partner.

SAT 3 JUL 2010; 15:25 CET / 15:25 local time - Version 1

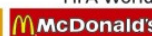
Page 1/0

2010 FIFA World Cup South Africa™

FIFA Partners



FIFA World Cup Sponsors



National Supporters

