

# Player Statistics



Round of 16

Paraguay - Japan 0:0 a.e.t. 5:3 PSO

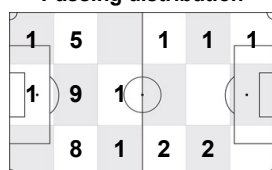
Tshwane/Pretoria / Loftus Versfeld Stadium / RSA



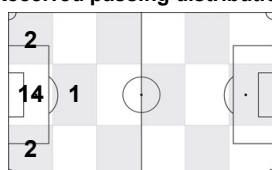
**Paraguay**  
**1 Justo VILLAR**  
Goalkeeper

	1st half	2nd half	Extra time	Total	Team total	Team avg
Goal(s) scored	0	0	0	0	0	
Attempts on/off target	0	0	0	0	10	
Assist(s)	0	0	0	0	0	
Offside(s)	0	0	0	0	1	
Save(s)	2	1	1	4	4	
Yellow card(s)	0	0	0	0	1	
Red card	0	0	0	0	0	
Foul(s) committed	0	0	0	0	26	
Delivery/solo runs into the attacking third	0	0	4	4	48	4.4
Delivery/solo runs into the penalty area	0	0	0	0	14	1.4
Tackles gaining the ball	0	0	0	0	2	0.2
Tackles not gaining the ball	0	0	0	0	3	0.3
Tackles suffered losing the ball	0	0	0	0	3	0.3
Tackles suffered not losing the ball	0	0	0	0	1	0.1
Clearances Completed	0	0	0	0	1	0.1
Clearances Attempted	0	1	0	1	7	0.7

Passing distribution



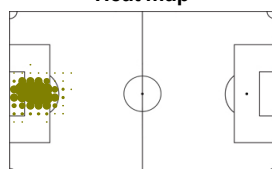
Received passing distribution



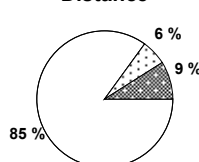
## Activities

	1st half	2nd half	Extra time	Total	Team total	Team avg
Total time played (mins)	46'02"	48'18"	30'07"	124'27"		
Low activity time spent (%)	98%	97%	96%	97%	84%	
Medium activity time spent (%)	1%	2%	2%	2%	7%	
High activity time spent (%)	1%	1%	2%	1%	9%	
Distance covered (metres)	2,169	2,040	1,337	5,546	134,529	12,232
Low activity distance covered (metres)	1,925	1,733	1,069	4,727	81,015	7,367
Medium activity distance covered (metres)	128	128	97	353	19,638	1,786
High activity distance covered (metres)	115	178	172	465	33,870	3,080
Top speed (km/h)	12.21	17.31	16.37	17.31	27.11	22.72
Sprints	3	9	7	19	1387	161

Heat map



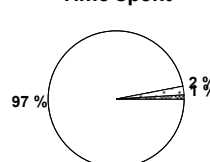
Distance



Activity



Time spent



FIFA does not vouch for the accuracy of technical statistics compiled in association with its competition results system partner.

TUE 29 JUN 2010; 18:51 CET / 18:51 local time - Version 1

Page1/0

2010 FIFA World Cup South Africa™

FIFA Partners



FIFA World Cup Sponsors



National Supporters



# Player Statistics



Round of 16

Paraguay - Japan 0:0 a.e.t. 5:3 PSO

Tshwane/Pretoria / Loftus Versfeld Stadium / RSA



**Paraguay**  
**3 Claudio MOREL**  
Defender

	1st half	2nd half	Extra time	Total	Team total	Team avg
Goal(s) scored	0	0	0	0	0	
Attempts on/off target	0	0	0	0	10	
Assist(s)	0	0	0	0	0	
Offside(s)	0	0	0	0	1	
Save(s)	0	0	0	0	4	
Yellow card(s)	0	0	0	0	1	
Red card	0	0	0	0	0	
Foul(s) committed	0	1	0	1	26	
Delivery/solo runs into the attacking third	4	4	2	10	48	4.4
Delivery/solo runs into the penalty area	1	2	3	6	14	1.4
Tackles gaining the ball	0	0	0	0	2	0.2
Tackles not gaining the ball	0	0	0	0	3	0.3
Tackles suffered losing the ball	0	0	0	0	3	0.3
Tackles suffered not losing the ball	0	0	0	0	1	0.1
Clearances Completed	0	0	1	1	1	0.1
Clearances Attempted	0	0	1	1	7	0.7

Passing distribution



Direction of play →

Received passing distribution

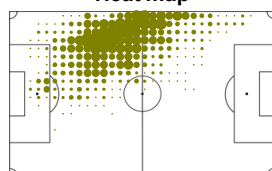


Direction of play →

## Activities

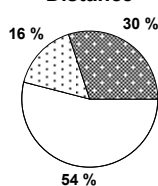
	1st half	2nd half	Extra time	Total	Team total	Team avg
Total time played (mins)	46'02"	48'18"	30'07"	124'27"		
Low activity time spent (%)	75%	81%	80%	79%	84%	
Medium activity time spent (%)	11%	8%	8%	9%	7%	
High activity time spent (%)	14%	11%	12%	12%	9%	
Distance covered (metres)	5,295	4,737	3,199	13,231	134,529	12,232
Low activity distance covered (metres)	2,685	2,664	1,751	7,100	81,015	7,367
Medium activity distance covered (metres)	899	721	475	2,095	19,638	1,786
High activity distance covered (metres)	1,711	1,352	972	4,035	33,870	3,080
Top speed (km/h)	21.38	27.11	22.06	27.11	27.11	22.72
Sprints	78	54	51	183	1387	161

Heat map



Direction of play →

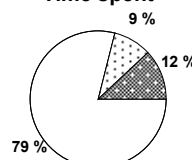
Distance



Activity



Time spent



FIFA does not vouch for the accuracy of technical statistics compiled in association with its competition results system partner.

TUE 29 JUN 2010; 18:51 CET / 18:51 local time - Version 1

Page1/0

2010 FIFA World Cup South Africa™

FIFA Partners



FIFA World Cup Sponsors



National Supporters



# Player Statistics



Round of 16

Paraguay - Japan 0:0 a.e.t. 5:3 PSO

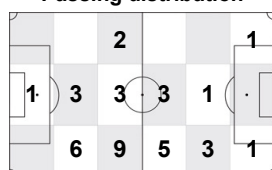
Tshwane/Pretoria / Loftus Versfeld Stadium / RSA



**Paraguay**  
**6 Carlos BONET**  
Midfield

	1st half	2nd half	Extra time	Total	Team total	Team avg
Goal(s) scored	0	0	0	0	0	
Attempts on/off target	0	0	0	0	10	
Assist(s)	0	0	0	0	0	
Offside(s)	0	0	0	0	1	
Save(s)	0	0	0	0	4	
Yellow card(s)	0	0	0	0	1	
Red card	0	0	0	0	0	
Foul(s) committed	0	0	1	1	26	
Delivery/solo runs into the attacking third	2	3	0	5	48	4.4
Delivery/solo runs into the penalty area	0	0	0	0	14	1.4
Tackles gaining the ball	0	1	0	1	2	0.2
Tackles not gaining the ball	0	0	0	0	3	0.3
Tackles suffered losing the ball	0	0	0	0	3	0.3
Tackles suffered not losing the ball	0	0	0	0	1	0.1
Clearances Completed	0	0	0	0	1	0.1
Clearances Attempted	2	0	0	2	7	0.7

Passing distribution



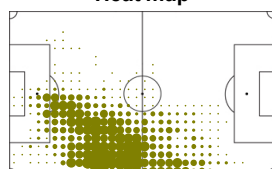
Received passing distribution



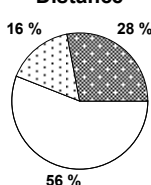
## Activities

	1st half	2nd half	Extra time	Total	Team total	Team avg
Total time played (mins)	46'02"	48'18"	30'07"	124'27"		
Low activity time spent (%)	77%	83%	81%	81%	84%	
Medium activity time spent (%)	11%	7%	8%	9%	7%	
High activity time spent (%)	12%	10%	11%	10%	9%	
Distance covered (metres)	5,497	4,802	3,325	13,624	134,529	12,232
Low activity distance covered (metres)	2,938	2,772	1,907	7,617	81,015	7,367
Medium activity distance covered (metres)	964	685	496	2,145	19,638	1,786
High activity distance covered (metres)	1,595	1,345	922	3,862	33,870	3,080
Top speed (km/h)	22.50	26.21	24.14	26.21	27.11	22.72
Sprints	74	46	24	144	1387	161

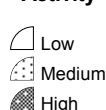
Heat map



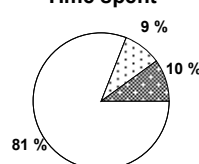
Distance



Activity



Time spent



FIFA does not vouch for the accuracy of technical statistics compiled in association with its competition results system partner.

TUE 29 JUN 2010; 18:51 CET / 18:51 local time - Version 1

Page1/0

2010 FIFA World Cup South Africa™

FIFA Partners



FIFA World Cup Sponsors



National Supporters



# Player Statistics



Round of 16

Paraguay - Japan 0:0 a.e.t. 5:3 PSO

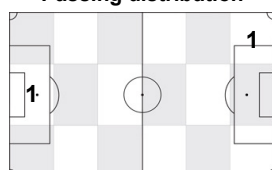
Tshwane/Pretoria / Loftus Versfeld Stadium / RSA



**Paraguay**  
**7 Oscar CARDOZO**  
Forward

	1st half	2nd half	Extra time	Total	Team total	Team avg
Goal(s) scored	0	0	0	0	0	
Attempts on/off target	0	0	0	0	10	
Assist(s)	0	0	0	0	0	
Offside(s)	0	0	0	0	1	
Save(s)	0	0	0	0	4	
Yellow card(s)	0	0	0	0	1	
Red card	0	0	0	0	0	
Foul(s) committed	0	0	1	1	26	
Delivery/solo runs into the attacking third	-	-	0	0	48	4.4
Delivery/solo runs into the penalty area	-	-	1	1	14	1.4
Tackles gaining the ball	-	-	0	0	2	0.2
Tackles not gaining the ball	-	-	0	0	3	0.3
Tackles suffered losing the ball	-	-	0	0	3	0.3
Tackles suffered not losing the ball	-	-	0	0	1	0.1
Clearances Completed	-	-	0	0	1	0.1
Clearances Attempted	-	-	0	0	7	0.7

Passing distribution



Direction of play →

Received passing distribution

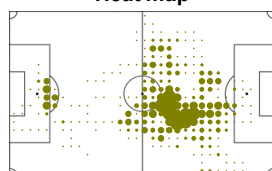


Direction of play →

## Activities

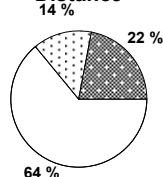
	1st half	2nd half	Extra time	Total	Team total	Team avg
Total time played (mins)	0'00"	0'00"	26'35"	26'35"		
Low activity time spent (%)	0%	0%	86%	86%	84%	
Medium activity time spent (%)	0%	0%	7%	7%	7%	
High activity time spent (%)	0%	0%	7%	7%	9%	
Distance covered (metres)	-	-	2,516	2,516	134,529	12,232
Low activity distance covered (metres)	-	-	1,601	1,601	81,015	7,367
Medium activity distance covered (metres)	-	-	343	343	19,638	1,786
High activity distance covered (metres)	-	-	571	571	33,870	3,080
Top speed (km/h)	-	-	18.75	18.75	27.11	22.72
Sprints	-	-	21	21	1387	161

Heat map



Direction of play →

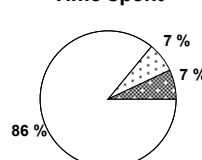
Distance



Activity



Time spent



FIFA does not vouch for the accuracy of technical statistics compiled in association with its competition results system partner.

TUE 29 JUN 2010; 18:51 CET / 18:51 local time - Version 1

Page1/0

2010 FIFA World Cup South Africa™

FIFA Partners



FIFA World Cup Sponsors



National Supporters



# Player Statistics



Round of 16

Paraguay - Japan 0:0 a.e.t. 5:3 PSO

Tshwane/Pretoria / Loftus Versfeld Stadium / RSA



**Paraguay**  
**8 Edgar BARRETO**  
Midfield

	1st half	2nd half	Extra time	Total	Team total	Team avg
Goal(s) scored	0	0	0	0	0	
Attempts on/off target	0	1	1	2	10	
Assist(s)	0	0	0	0	0	
Offside(s)	0	0	0	0	1	
Save(s)	0	0	0	0	4	
Yellow card(s)	0	0	0	0	1	
Red card	0	0	0	0	0	
Foul(s) committed	0	1	1	2	26	
Delivery/solo runs into the attacking third	-	0	0	0	48	4.4
Delivery/solo runs into the penalty area	-	0	1	1	14	1.4
Tackles gaining the ball	-	0	0	0	2	0.2
Tackles not gaining the ball	-	0	0	0	3	0.3
Tackles suffered losing the ball	-	0	0	0	3	0.3
Tackles suffered not losing the ball	-	0	0	0	1	0.1
Clearances Completed	-	0	0	0	1	0.1
Clearances Attempted	-	0	0	0	7	0.7

Passing distribution



Direction of play →

Received passing distribution

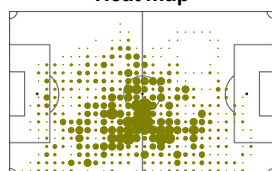


Direction of play →

## Activities

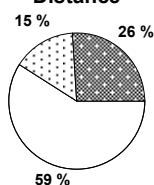
	1st half	2nd half	Extra time	Total	Team total	Team avg
Total time played (mins)	0'00"	18'29"	30'07"	48'36"		
Low activity time spent (%)	0%	79%	85%	83%	84%	
Medium activity time spent (%)	0%	8%	7%	7%	7%	
High activity time spent (%)	0%	13%	8%	10%	9%	
Distance covered (metres)	-	2,034	3,064	5,098	134,529	12,232
Low activity distance covered (metres)	-	1,136	1,850	2,986	81,015	7,367
Medium activity distance covered (metres)	-	290	452	742	19,638	1,786
High activity distance covered (metres)	-	608	763	1,371	33,870	3,080
Top speed (km/h)	-	21.38	18.09	21.38	27.11	22.72
Sprints	-	29	23	52	1387	161

Heat map



Direction of play →

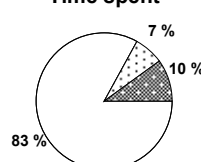
Distance



Activity



Time spent



FIFA does not vouch for the accuracy of technical statistics compiled in association with its competition results system partner.

TUE 29 JUN 2010; 18:51 CET / 18:51 local time - Version 1

Page1/0

2010 FIFA World Cup South Africa™

FIFA Partners



FIFA World Cup Sponsors



National Supporters





# Player Statistics



Round of 16

Paraguay - Japan 0:0 a.e.t. 5:3 PSO

Tshwane/Pretoria / Loftus Versfeld Stadium / RSA



**Paraguay**  
**9 Roque SANTA CRUZ**  
 Forward

	1st half	2nd half	Extra time	Total	Team total	Team avg
Goal(s) scored	0	0	0	0	0	
Attempts on/off target	1	0	0	1	10	
Assist(s)	0	0	0	0	0	
Offside(s)	0	0	0	0	1	
Save(s)	0	0	0	0	4	
Yellow card(s)	0	0	0	0	1	
Red card	0	0	0	0	0	
Foul(s) committed	2	1	0	3	26	
Delivery/solo runs into the attacking third	1	0	0	1	48	4.4
Delivery/solo runs into the penalty area	0	0	0	0	14	1.4
Tackles gaining the ball	0	0	0	0	2	0.2
Tackles not gaining the ball	1	0	0	1	3	0.3
Tackles suffered losing the ball	0	0	0	0	3	0.3
Tackles suffered not losing the ball	0	0	0	0	1	0.1
Clearances Completed	0	0	0	0	1	0.1
Clearances Attempted	0	0	0	0	7	0.7

Passing distribution



Direction of play →

Received passing distribution

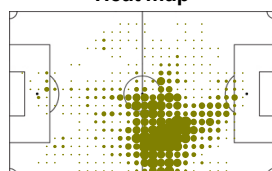


Direction of play →

## Activities

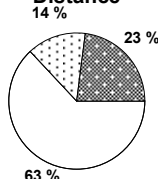
	1st half	2nd half	Extra time	Total	Team total	Team avg
Total time played (mins)	46'02"	48'18"	3'32"	97'52"		
Low activity time spent (%)	84%	85%	78%	84%	84%	
Medium activity time spent (%)	9%	7%	8%	8%	7%	
High activity time spent (%)	7%	8%	14%	8%	9%	
Distance covered (metres)	5,041	4,624	466	10,131	134,529	12,232
Low activity distance covered (metres)	3,245	2,948	227	6,420	81,015	7,367
Medium activity distance covered (metres)	746	612	60	1,418	19,638	1,786
High activity distance covered (metres)	1,050	1,064	179	2,293	33,870	3,080
Top speed (km/h)	22.70	23.84	19.88	23.84	27.11	22.72
Sprints	48	50	9	107	1387	161

Heat map



Direction of play →

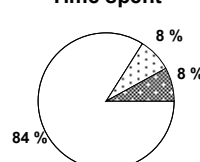
Distance



Activity



Time spent



FIFA does not vouch for the accuracy of technical statistics compiled in association with its competition results system partner.

TUE 29 JUN 2010; 18:51 CET / 18:51 local time - Version 1

Page1/0

2010 FIFA World Cup South Africa™

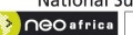
FIFA Partners



FIFA World Cup Sponsors



National Supporters



# Player Statistics



Round of 16

Paraguay - Japan 0:0 a.e.t. 5:3 PSO

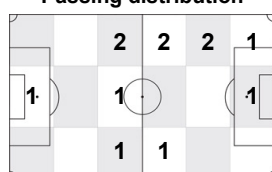
Tshwane/Pretoria / Loftus Versfeld Stadium / RSA



**Paraguay**  
**10 Edgar BENITEZ**  
Forward

	1st half	2nd half	Extra time	Total	Team total	Team avg
Goal(s) scored	0	0	0	0	0	
Attempts on/off target	1	0	0	1	10	
Assist(s)	0	0	0	0	0	
Offside(s)	0	0	0	0	1	
Save(s)	0	0	0	0	4	
Yellow card(s)	0	0	0	0	1	
Red card	0	0	0	0	0	
Foul(s) committed	0	0	0	0	26	
Delivery/solo runs into the attacking third	2	1	0	3	48	4.4
Delivery/solo runs into the penalty area	0	1	0	1	14	1.4
Tackles gaining the ball	0	0	0	0	2	0.2
Tackles not gaining the ball	0	0	0	0	3	0.3
Tackles suffered losing the ball	1	0	0	1	3	0.3
Tackles suffered not losing the ball	1	0	0	1	1	0.1
Clearances Completed	0	0	0	0	1	0.1
Clearances Attempted	0	0	0	0	7	0.7

Passing distribution



Direction of play →

Received passing distribution

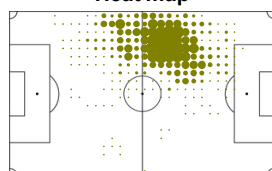


Direction of play →

## Activities

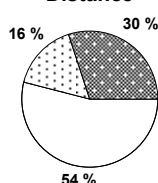
	1st half	2nd half	Extra time	Total	Team total	Team avg
Total time played (mins)	46'02"	14'14"	0'00"	60'16"		
Low activity time spent (%)	81%	79%	0%	80%	84%	
Medium activity time spent (%)	8%	10%	0%	9%	7%	
High activity time spent (%)	11%	11%	0%	11%	9%	
Distance covered (metres)	5,125	1,665	-	6,790	134,529	12,232
Low activity distance covered (metres)	2,773	891	-	3,664	81,015	7,367
Medium activity distance covered (metres)	812	291	-	1,103	19,638	1,786
High activity distance covered (metres)	1,540	483	-	2,023	33,870	3,080
Top speed (km/h)	21.13	21.30	-	21.30	27.11	22.72
Sprints	70	24	-	94	1387	161

Heat map

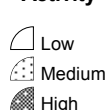


Direction of play →

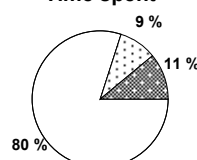
Distance



Activity



Time spent



FIFA does not vouch for the accuracy of technical statistics compiled in association with its competition results system partner.

TUE 29 JUN 2010; 18:51 CET / 18:51 local time - Version 1

Page1/0

2010 FIFA World Cup South Africa™

FIFA Partners



FIFA World Cup Sponsors



National Supporters



# Player Statistics



Round of 16

Paraguay - Japan 0:0 a.e.t. 5:3 PSO

Tshwane/Pretoria / Loftus Versfeld Stadium / RSA



**Paraguay**  
**13 Enrique VERA**  
Midfield

	1st half	2nd half	Extra time	Total	Team total	Team avg
Goal(s) scored	0	0	0	0	0	
Attempts on/off target	0	0	0	0	10	
Assist(s)	0	0	0	0	0	
Offside(s)	0	0	0	0	1	
Save(s)	0	0	0	0	4	
Yellow card(s)	0	0	0	0	1	
Red card	0	0	0	0	0	
Foul(s) committed	1	0	2	3	26	
Delivery/solo runs into the attacking third	3	2	1	6	48	4.4
Delivery/solo runs into the penalty area	0	1	1	2	14	1.4
Tackles gaining the ball	0	0	0	0	2	0.2
Tackles not gaining the ball	0	0	1	1	3	0.3
Tackles suffered losing the ball	0	0	0	0	3	0.3
Tackles suffered not losing the ball	0	0	0	0	1	0.1
Clearances Completed	0	0	0	0	1	0.1
Clearances Attempted	0	1	0	1	7	0.7

Passing distribution



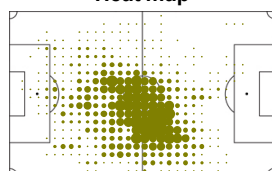
Received passing distribution



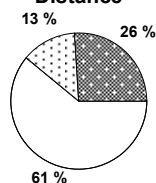
## Activities

	1st half	2nd half	Extra time	Total	Team total	Team avg
Total time played (mins)	46'02"	48'18"	30'07"	124'27"		
Low activity time spent (%)	82%	86%	86%	84%	84%	
Medium activity time spent (%)	8%	7%	6%	7%	7%	
High activity time spent (%)	10%	7%	8%	9%	9%	
Distance covered (metres)	5,216	4,608	3,105	12,929	134,529	12,232
Low activity distance covered (metres)	3,075	2,919	1,870	7,864	81,015	7,367
Medium activity distance covered (metres)	743	606	359	1,708	19,638	1,786
High activity distance covered (metres)	1,398	1,084	876	3,358	33,870	3,080
Top speed (km/h)	23.30	22.11	21.13	23.30	27.11	22.72
Sprints	50	36	43	129	1387	161

Heat map



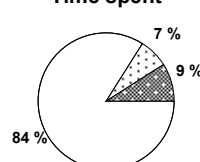
Distance



Activity



Time spent



FIFA does not vouch for the accuracy of technical statistics compiled in association with its competition results system partner.

TUE 29 JUN 2010; 18:51 CET / 18:51 local time - Version 1

Page1/0

2010 FIFA World Cup South Africa™

FIFA Partners



FIFA World Cup Sponsors



National Supporters





## Player Statistics



Round of 16

Paraguay - Japan 0:0 a.e.t. 5:3 PSO

Tshwane/Pretoria / Loftus Versfeld Stadium / RSA



**Paraguay**  
**14 Paulo DA SILVA**  
Defender

	1st half	2nd half	Extra time	Total	Team total	Team avg
Goal(s) scored	0	0	0	0	0	
Attempts on/off target	0	0	1	1	10	
Assist(s)	0	0	0	0	0	
Offside(s)	0	0	0	0	1	
Save(s)	0	0	0	0	4	
Yellow card(s)	0	0	0	0	1	
Red card	0	0	0	0	0	
Foul(s) committed	4	0	0	4	26	
Delivery/solo runs into the attacking third	1	0	2	3	48	4.4
Delivery/solo runs into the penalty area	0	0	0	0	14	1.4
Tackles gaining the ball	1	0	0	1	2	0.2
Tackles not gaining the ball	1	0	0	1	3	0.3
Tackles suffered losing the ball	0	0	0	0	3	0.3
Tackles suffered not losing the ball	0	0	0	0	1	0.1
Clearances Completed	0	0	0	0	1	0.1
Clearances Attempted	0	0	0	0	7	0.7

Passing distribution



Direction of play →

Received passing distribution

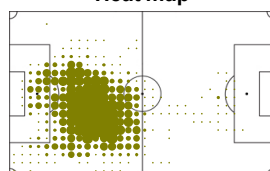


Direction of play →

## Activities

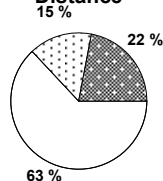
	1st half	2nd half	Extra time	Total	Team total	Team avg
Total time played (mins)	46'02"	48'18"	30'07"	124'27"		
Low activity time spent (%)	82%	87%	85%	85%	84%	
Medium activity time spent (%)	8%	6%	7%	7%	7%	
High activity time spent (%)	10%	7%	8%	8%	9%	
Distance covered (metres)	4,895	4,224	2,870	11,989	134,529	12,232
Low activity distance covered (metres)	2,937	2,835	1,795	7,567	81,015	7,367
Medium activity distance covered (metres)	775	532	438	1,745	19,638	1,786
High activity distance covered (metres)	1,183	857	638	2,678	33,870	3,080
Top speed (km/h)	20.29	18.03	18.08	20.29	27.11	22.72
Sprints	56	18	25	99	1387	161

Heat map



Direction of play →

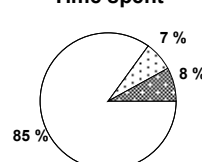
Distance



Activity



Time spent



FIFA does not vouch for the accuracy of technical statistics compiled in association with its competition results system partner.

TUE 29 JUN 2010; 18:51 CET / 18:51 local time - Version 1

Page1/0

2010 FIFA World Cup South Africa™

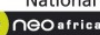
FIFA Partners



FIFA World Cup Sponsors



National Supporters



# Player Statistics



Round of 16

Paraguay - Japan 0:0 a.e.t. 5:3 PSO

Tshwane/Pretoria / Loftus Versfeld Stadium / RSA



**Paraguay**  
**16 Cristian RIVEROS**  
 Midfield

	1st half	2nd half	Extra time	Total	Team total	Team avg
Goal(s) scored	0	0	0	0	0	
Attempts on/off target	0	1	0	1	10	
Assist(s)	0	0	0	0	0	
Offside(s)	0	0	0	0	1	
Save(s)	0	0	0	0	4	
Yellow card(s)	0	0	1	1	1	
Red card	0	0	0	0	0	
Foul(s) committed	0	1	1	2	26	
Delivery/solo runs into the attacking third	1	1	1	3	48	4.4
Delivery/solo runs into the penalty area	0	0	1	1	14	1.4
Tackles gaining the ball	0	0	0	0	2	0.2
Tackles not gaining the ball	0	0	0	0	3	0.3
Tackles suffered losing the ball	0	0	0	0	3	0.3
Tackles suffered not losing the ball	0	0	0	0	1	0.1
Clearances Completed	0	0	0	0	1	0.1
Clearances Attempted	0	0	0	0	7	0.7

Passing distribution



Direction of play →

Received passing distribution

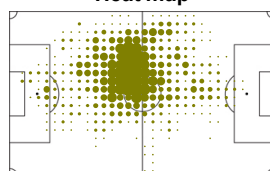


Direction of play →

## Activities

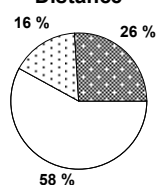
	1st half	2nd half	Extra time	Total	Team total	Team avg
Total time played (mins)	46'02"	48'18"	30'07"	124'27"		
Low activity time spent (%)	79%	83%	83%	81%	84%	
Medium activity time spent (%)	11%	8%	7%	9%	7%	
High activity time spent (%)	10%	9%	10%	10%	9%	
Distance covered (metres)	5,382	5,027	3,388	13,797	134,529	12,232
Low activity distance covered (metres)	3,007	2,989	1,984	7,980	81,015	7,367
Medium activity distance covered (metres)	965	760	483	2,208	19,638	1,786
High activity distance covered (metres)	1,409	1,278	921	3,608	33,870	3,080
Top speed (km/h)	22.53	22.86	25.23	25.23	27.11	22.72
Sprints	61	53	40	154	1387	161

Heat map

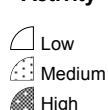


Direction of play →

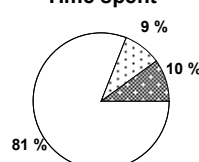
Distance



Activity



Time spent



FIFA does not vouch for the accuracy of technical statistics compiled in association with its competition results system partner.

TUE 29 JUN 2010; 18:51 CET / 18:51 local time - Version 1

Page1/0

2010 FIFA World Cup South Africa™

FIFA Partners



FIFA World Cup Sponsors



National Supporters



# Player Statistics



Round of 16

Paraguay - Japan 0:0 a.e.t. 5:3 PSO

Tshwane/Pretoria / Loftus Versfeld Stadium / RSA



**Paraguay**  
**18 Nelson VALDEZ**  
Forward

	1st half	2nd half	Extra time	Total	Team total	Team avg
Goal(s) scored	0	0	0	0	0	
Attempts on/off target	0	0	2	2	10	
Assist(s)	0	0	0	0	0	
Offside(s)	0	0	0	0	1	
Save(s)	0	0	0	0	4	
Yellow card(s)	0	0	0	0	1	
Red card	0	0	0	0	0	
Foul(s) committed	0	1	1	2	26	
Delivery/solo runs into the attacking third	-	1	1	2	48	4.4
Delivery/solo runs into the penalty area	-	0	0	0	14	1.4
Tackles gaining the ball	-	0	0	0	2	0.2
Tackles not gaining the ball	-	0	0	0	3	0.3
Tackles suffered losing the ball	-	0	0	0	3	0.3
Tackles suffered not losing the ball	-	0	0	0	1	0.1
Clearances Completed	-	0	0	0	1	0.1
Clearances Attempted	-	0	0	0	7	0.7

Passing distribution



Direction of play →

Received passing distribution

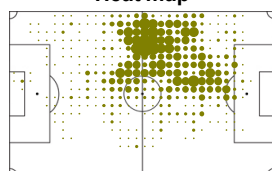


Direction of play →

## Activities

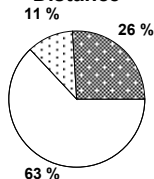
	1st half	2nd half	Extra time	Total	Team total	Team avg
Total time played (mins)	0'00"	34'04"	30'07"	64'11"		
Low activity time spent (%)	0%	89%	84%	87%	84%	
Medium activity time spent (%)	0%	5%	7%	6%	7%	
High activity time spent (%)	0%	6%	9%	7%	9%	
Distance covered (metres)	-	2,931	3,278	6,209	134,529	12,232
Low activity distance covered (metres)	-	1,943	1,980	3,923	81,015	7,367
Medium activity distance covered (metres)	-	310	387	697	19,638	1,786
High activity distance covered (metres)	-	677	910	1,587	33,870	3,080
Top speed (km/h)	-	22.11	23.55	23.55	27.11	22.72
Sprints	-	41	39	80	1387	161

Heat map



Direction of play →

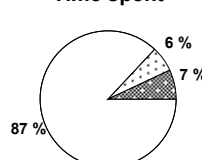
Distance



Activity



Time spent



FIFA does not vouch for the accuracy of technical statistics compiled in association with its competition results system partner.

TUE 29 JUN 2010; 18:51 CET / 18:51 local time - Version 1

Page1/0

2010 FIFA World Cup South Africa™

FIFA Partners



FIFA World Cup Sponsors



National Supporters



# Player Statistics



Round of 16

Paraguay - Japan 0:0 a.e.t. 5:3 PSO

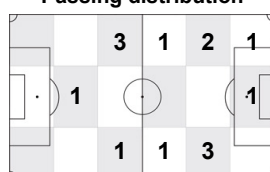
Tshwane/Pretoria / Loftus Versfeld Stadium / RSA



**Paraguay**  
**19 Lucas BARRIOS**  
Forward

	1st half	2nd half	Extra time	Total	Team total	Team avg
Goal(s) scored	0	0	0	0	0	
Attempts on/off target	1	0	1	2	10	
Assist(s)	0	0	0	0	0	
Offside(s)	0	1	0	1	1	
Save(s)	0	0	0	0	4	
Yellow card(s)	0	0	0	0	1	
Red card	0	0	0	0	0	
Foul(s) committed	1	2	1	4	26	
Delivery/solo runs into the attacking third	0	2	0	2	48	4.4
Delivery/solo runs into the penalty area	0	0	0	0	14	1.4
Tackles gaining the ball	0	0	0	0	2	0.2
Tackles not gaining the ball	0	0	0	0	3	0.3
Tackles suffered losing the ball	0	1	0	1	3	0.3
Tackles suffered not losing the ball	0	0	0	0	1	0.1
Clearances Completed	0	0	0	0	1	0.1
Clearances Attempted	0	0	0	0	7	0.7

Passing distribution



Direction of play →

Received passing distribution

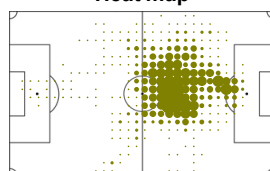


Direction of play →

## Activities

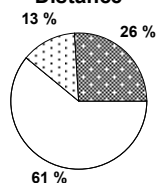
	1st half	2nd half	Extra time	Total	Team total	Team avg
Total time played (mins)	46'02"	48'18"	30'07"	124'27"		
Low activity time spent (%)	83%	85%	84%	84%	84%	
Medium activity time spent (%)	8%	6%	7%	7%	7%	
High activity time spent (%)	9%	9%	9%	9%	9%	
Distance covered (metres)	4,770	4,496	3,039	12,305	134,529	12,232
Low activity distance covered (metres)	2,934	2,728	1,836	7,498	81,015	7,367
Medium activity distance covered (metres)	661	519	423	1,603	19,638	1,786
High activity distance covered (metres)	1,175	1,248	780	3,203	33,870	3,080
Top speed (km/h)	18.56	26.41	22.49	26.41	27.11	22.72
Sprints	50	53	28	131	1387	161

Heat map



Direction of play →

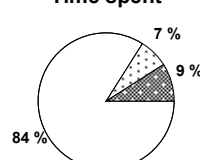
Distance



Activity



Time spent



FIFA does not vouch for the accuracy of technical statistics compiled in association with its competition results system partner.

TUE 29 JUN 2010; 18:51 CET / 18:51 local time - Version 1

Page1/0

2010 FIFA World Cup South Africa™

FIFA Partners



FIFA World Cup Sponsors



National Supporters



# Player Statistics



Round of 16

Paraguay - Japan 0:0 a.e.t. 5:3 PSO

Tshwane/Pretoria / Loftus Versfeld Stadium / RSA



**Paraguay**  
**20 Nestor ORTIGOZA**  
Midfield

	1st half	2nd half	Extra time	Total	Team total	Team avg
Goal(s) scored	0	0	0	0	0	
Attempts on/off target	0	0	0	0	10	
Assist(s)	0	0	0	0	0	
Offside(s)	0	0	0	0	1	
Save(s)	0	0	0	0	4	
Yellow card(s)	0	0	0	0	1	
Red card	0	0	0	0	0	
Foul(s) committed	0	0	0	0	26	
Delivery/solo runs into the attacking third	2	2	0	4	48	4.4
Delivery/solo runs into the penalty area	1	0	0	1	14	1.4
Tackles gaining the ball	0	0	0	0	2	0.2
Tackles not gaining the ball	0	0	0	0	3	0.3
Tackles suffered losing the ball	0	1	0	1	3	0.3
Tackles suffered not losing the ball	0	0	0	0	1	0.1
Clearances Completed	0	0	0	0	1	0.1
Clearances Attempted	0	0	0	0	7	0.7

Passing distribution



Direction of play →

Received passing distribution

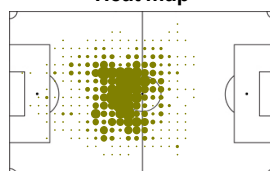


Direction of play →

## Activities

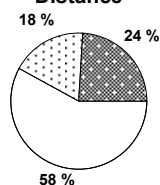
	1st half	2nd half	Extra time	Total	Team total	Team avg
Total time played (mins)	46'02"	29'49"	0'00"	75'51"		
Low activity time spent (%)	78%	82%	0%	80%	84%	
Medium activity time spent (%)	11%	10%	0%	10%	7%	
High activity time spent (%)	11%	8%	0%	10%	9%	
Distance covered (metres)	5,242	3,155	-	8,397	134,529	12,232
Low activity distance covered (metres)	2,953	1,887	-	4,840	81,015	7,367
Medium activity distance covered (metres)	992	559	-	1,551	19,638	1,786
High activity distance covered (metres)	1,297	709	-	2,006	33,870	3,080
Top speed (km/h)	21.71	22.54	-	22.54	27.11	22.72
Sprints	38	25	-	63	1387	161

Heat map

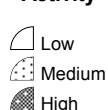


Direction of play →

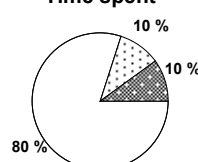
Distance



Activity



Time spent



FIFA does not vouch for the accuracy of technical statistics compiled in association with its competition results system partner.

TUE 29 JUN 2010; 18:51 CET / 18:51 local time - Version 1

Page1/0

2010 FIFA World Cup South Africa™

FIFA Partners



FIFA World Cup Sponsors



National Supporters





# Player Statistics



Round of 16

Paraguay - Japan 0:0 a.e.t. 5:3 PSO

Tshwane/Pretoria / Loftus Versfeld Stadium / RSA



**Paraguay**  
**21 Antolin ALCARAZ**  
 Defender

	1st half	2nd half	Extra time	Total	Team total	Team avg
Goal(s) scored	0	0	0	0	0	
Attempts on/off target	0	0	0	0	10	
Assist(s)	0	0	0	0	0	
Offside(s)	0	0	0	0	1	
Save(s)	0	0	0	0	4	
Yellow card(s)	0	0	0	0	1	
Red card	0	0	0	0	0	
Foul(s) committed	1	0	2	3	26	
Delivery/solo runs into the attacking third	3	0	2	5	48	4.4
Delivery/solo runs into the penalty area	0	0	1	1	14	1.4
Tackles gaining the ball	0	0	0	0	2	0.2
Tackles not gaining the ball	0	0	0	0	3	0.3
Tackles suffered losing the ball	0	0	0	0	3	0.3
Tackles suffered not losing the ball	0	0	0	0	1	0.1
Clearances Completed	0	0	0	0	1	0.1
Clearances Attempted	1	1	0	2	7	0.7

Passing distribution



Direction of play →

Received passing distribution

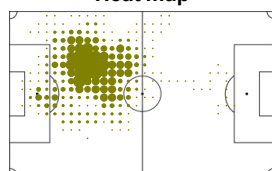


Direction of play →

## Activities

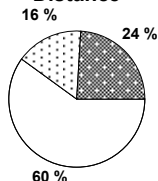
	1st half	2nd half	Extra time	Total	Team total	Team avg
Total time played (mins)	46'02"	48'18"	30'07"	124'27"		
Low activity time spent (%)	82%	84%	85%	84%	84%	
Medium activity time spent (%)	10%	9%	6%	8%	7%	
High activity time spent (%)	8%	7%	9%	8%	9%	
Distance covered (metres)	4,914	4,413	2,640	11,967	134,529	12,232
Low activity distance covered (metres)	2,802	2,786	1,640	7,228	81,015	7,367
Medium activity distance covered (metres)	825	769	333	1,927	19,638	1,786
High activity distance covered (metres)	1,287	858	665	2,810	33,870	3,080
Top speed (km/h)	18.96	20.85	20.85	20.85	27.11	22.72
Sprints	55	30	26	111	1387	161

Heat map



Direction of play →

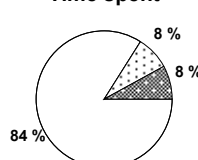
Distance



Activity



Time spent



FIFA does not vouch for the accuracy of technical statistics compiled in association with its competition results system partner.

TUE 29 JUN 2010; 18:51 CET / 18:51 local time - Version 1

Page1/0

2010 FIFA World Cup South Africa™

FIFA Partners



FIFA World Cup Sponsors



National Supporters



