

Player Statistics



Group E

Denmark - Japan 1:3 (0:2)

Rustenburg / Royal Bafokeng Stadium / RSA



Japan
2 Yuki ABE
Midfield

	1st half	2nd half	Total	Team total	Team avg
Goal(s) scored	0	0	0	3	
Attempts on/off target	0	0	0	14	
Assist(s)	0	0	0	1	
Offside(s)	0	0	0	5	
Save(s)	0	0	0	5	
Yellow card(s)	0	0	0	2	
Red card	0	0	0	0	
Foul(s) committed	0	0	0	10	
Delivery/solo runs into the attacking third	1	1	2	36	2.8
Delivery/solo runs into the penalty area	0	1	1	9	0.9
Tackles gaining the ball	0	0	0	2	0.2
Tackles not gaining the ball	0	0	0	0	0.0
Tackles suffered losing the ball	0	0	0	3	0.3
Tackles suffered not losing the ball	0	0	0	7	0.7
Clearances Completed	0	0	0	2	0.2
Clearances Attempted	0	0	0	10	1.0

Passing distribution



Direction of play →

Received passing distribution

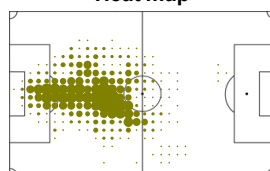


Direction of play →

Activities

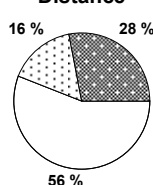
	1st half	2nd half	Total	Team total	Team avg
Total time played (mins)	47'04"	49'12"	96'16"		
Low activity time spent (%)	77%	80%	79%	82%	
Medium activity time spent (%)	11%	9%	10%	9%	
High activity time spent (%)	12%	11%	11%	9%	
Distance covered (metres)	5,683	5,141	10,824	112,904	10,262
Low activity distance covered (metres)	2,958	3,055	6,013	64,764	5,886
Medium activity distance covered (metres)	988	771	1,759	17,621	1,602
High activity distance covered (metres)	1,737	1,315	3,052	30,517	2,774
Top speed (km/h)	21.88	19.52	21.88	28.11	20.83
Sprints	71	58	129	1235	139

Heat map



Direction of play →

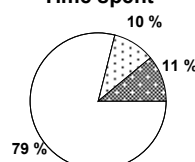
Distance



Activity



Time spent



FIFA does not vouch for the accuracy of technical statistics compiled in association with its competition results system partner.

THU 24 JUN 2010; 22:41 CET / 22:41 local time - Version 1

Page1/0

2010 FIFA World Cup South Africa™

FIFA Partners



FIFA World Cup Sponsors



National Supporters



Player Statistics



Group E

Denmark - Japan 1:3 (0:2)

Rustenburg / Royal Bafokeng Stadium / RSA



Japan
3 Yuichi KOMANO
 Defender

	1st half	2nd half	Total	Team total	Team avg
Goal(s) scored	0	0	0	3	
Attempts on/off target	1	0	1	14	
Assist(s)	0	0	0	1	
Offside(s)	1	0	1	5	
Save(s)	0	0	0	5	
Yellow card(s)	0	0	0	2	
Red card	0	0	0	0	
Foul(s) committed	0	1	1	10	
Delivery/solo runs into the attacking third	3	5	8	36	2.8
Delivery/solo runs into the penalty area	1	0	1	9	0.9
Tackles gaining the ball	1	0	1	2	0.2
Tackles not gaining the ball	0	0	0	0	0.0
Tackles suffered losing the ball	0	0	0	3	0.3
Tackles suffered not losing the ball	1	0	1	7	0.7
Clearances Completed	0	1	1	2	0.2
Clearances Attempted	0	1	1	10	1.0

Passing distribution



Direction of play →

Received passing distribution

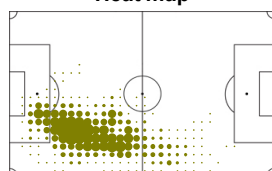


Direction of play →

Activities

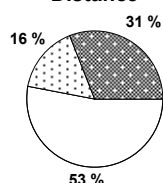
	1st half	2nd half	Total	Team total	Team avg
Total time played (mins)	47'04"	49'12"	96'16"		
Low activity time spent (%)	77%	81%	79%	82%	
Medium activity time spent (%)	9%	9%	9%	9%	
High activity time spent (%)	14%	10%	12%	9%	
Distance covered (metres)	5,575	5,236	10,811	112,904	10,262
Low activity distance covered (metres)	2,757	3,005	5,762	64,764	5,886
Medium activity distance covered (metres)	850	832	1,682	17,621	1,602
High activity distance covered (metres)	1,967	1,399	3,366	30,517	2,774
Top speed (km/h)	21.11	22.14	22.14	28.11	20.83
Sprints	79	62	141	1235	139

Heat map



Direction of play →

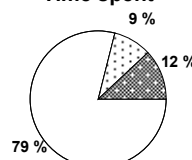
Distance



Activity



Time spent



FIFA does not vouch for the accuracy of technical statistics compiled in association with its competition results system partner.

THU 24 JUN 2010; 22:41 CET / 22:41 local time - Version 1

2010 FIFA World Cup South Africa™

FIFA Partners



FIFA World Cup Sponsors



National Supporters



Player Statistics



Group E

Denmark - Japan 1:3 (0:2)

Rustenburg / Royal Bafokeng Stadium / RSA



Japan
4 Marcus Tulio TANAKA
 Defender

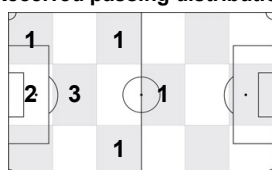
	1st half	2nd half	Total	Team total	Team avg
Goal(s) scored	0	0	0	3	
Attempts on/off target	0	1	1	14	
Assist(s)	0	0	0	1	
Offside(s)	0	0	0	5	
Save(s)	0	0	0	5	
Yellow card(s)	0	0	0	2	
Red card	0	0	0	0	
Foul(s) committed	0	0	0	10	
Delivery/solo runs into the attacking third	0	1	1	36	2.8
Delivery/solo runs into the penalty area	0	0	0	9	0.9
Tackles gaining the ball	0	0	0	2	0.2
Tackles not gaining the ball	0	0	0	0	0.0
Tackles suffered losing the ball	0	0	0	3	0.3
Tackles suffered not losing the ball	0	1	1	7	0.7
Clearances Completed	0	0	0	2	0.2
Clearances Attempted	0	1	1	10	1.0

Passing distribution



Direction of play →

Received passing distribution

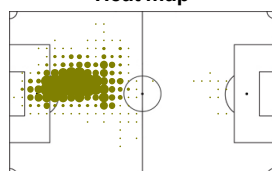


Direction of play →

Activities

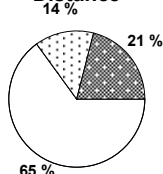
	1st half	2nd half	Total	Team total	Team avg
Total time played (mins)	47'04"	49'12"	96'16"		
Low activity time spent (%)	85%	85%	85%	82%	
Medium activity time spent (%)	8%	7%	7%	9%	
High activity time spent (%)	7%	8%	8%	9%	
Distance covered (metres)	4,849	4,668	9,517	112,904	10,262
Low activity distance covered (metres)	3,140	3,029	6,169	64,764	5,886
Medium activity distance covered (metres)	674	650	1,324	17,621	1,602
High activity distance covered (metres)	1,035	990	2,025	30,517	2,774
Top speed (km/h)	19.52	18.90	19.52	28.11	20.83
Sprints	37	38	75	1235	139

Heat map



Direction of play →

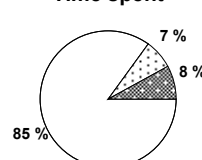
Distance



Activity



Time spent



FIFA does not vouch for the accuracy of technical statistics compiled in association with its competition results system partner.

THU 24 JUN 2010; 22:41 CET / 22:41 local time - Version 1

Page1/0

2010 FIFA World Cup South Africa™

FIFA Partners



FIFA World Cup Sponsors



National Supporters



Player Statistics



Group E

Denmark - Japan 1:3 (0:2)

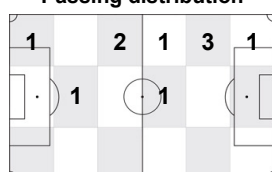
Rustenburg / Royal Bafokeng Stadium / RSA



Japan
5 Yuto NAGATOMO
Defender

	1st half	2nd half	Total	Team total	Team avg
Goal(s) scored	0	0	0	3	
Attempts on/off target	0	2	2	14	
Assist(s)	0	0	0	1	
Offside(s)	0	0	0	5	
Save(s)	0	0	0	5	
Yellow card(s)	1	0	1	2	
Red card	0	0	0	0	
Foul(s) committed	1	0	1	10	
Delivery/solo runs into the attacking third	0	2	2	36	2.8
Delivery/solo runs into the penalty area	0	0	0	9	0.9
Tackles gaining the ball	0	0	0	2	0.2
Tackles not gaining the ball	0	0	0	0	0.0
Tackles suffered losing the ball	0	0	0	3	0.3
Tackles suffered not losing the ball	0	0	0	7	0.7
Clearances Completed	0	0	0	2	0.2
Clearances Attempted	0	1	1	10	1.0

Passing distribution



Direction of play →

Received passing distribution

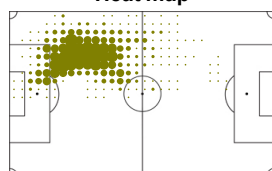


Direction of play →

Activities

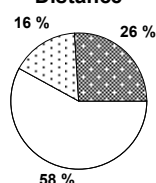
	1st half	2nd half	Total	Team total	Team avg
Total time played (mins)	47'04"	49'12"	96'16"		
Low activity time spent (%)	80%	80%	80%	82%	
Medium activity time spent (%)	10%	8%	9%	9%	
High activity time spent (%)	10%	12%	11%	9%	
Distance covered (metres)	5,265	5,538	10,803	112,904	10,262
Low activity distance covered (metres)	3,149	3,095	6,244	64,764	5,886
Medium activity distance covered (metres)	939	800	1,739	17,621	1,602
High activity distance covered (metres)	1,177	1,642	2,819	30,517	2,774
Top speed (km/h)	20.25	20.79	20.79	28.11	20.83
Sprints	47	65	112	1235	139

Heat map

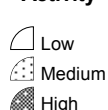


Direction of play →

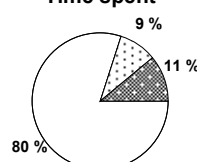
Distance



Activity



Time spent



FIFA does not vouch for the accuracy of technical statistics compiled in association with its competition results system partner.

THU 24 JUN 2010; 22:41 CET / 22:41 local time - Version 1

Page1/0

2010 FIFA World Cup South Africa™

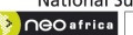
FIFA Partners



FIFA World Cup Sponsors



National Supporters



Player Statistics



Group E

Denmark - Japan 1:3 (0:2)

Rustenburg / Royal Bafokeng Stadium / RSA



Japan
7 Yasuhito ENDO
Midfield

	1st half	2nd half	Total	Team total	Team avg
Goal(s) scored	1	0	1	3	
Attempts on/off target	1	1	2	14	
Assist(s)	0	0	0	1	
Offside(s)	0	0	0	5	
Save(s)	0	0	0	5	
Yellow card(s)	1	0	1	2	
Red card	0	0	0	0	
Foul(s) committed	0	0	0	10	
Delivery/solo runs into the attacking third	2	2	4	36	2.8
Delivery/solo runs into the penalty area	0	0	0	9	0.9
Tackles gaining the ball	0	0	0	2	0.2
Tackles not gaining the ball	0	0	0	0	0.0
Tackles suffered losing the ball	0	0	0	3	0.3
Tackles suffered not losing the ball	0	0	0	7	0.7
Clearances Completed	0	0	0	2	0.2
Clearances Attempted	1	1	2	10	1.0

Passing distribution



Direction of play →

Received passing distribution

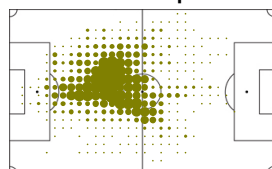


Direction of play →

Activities

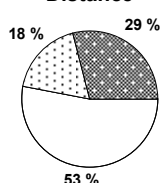
	1st half	2nd half	Total	Team total	Team avg
Total time played (mins)	47'04"	45'20"	92'24"		
Low activity time spent (%)	76%	78%	77%	82%	
Medium activity time spent (%)	11%	10%	11%	9%	
High activity time spent (%)	13%	12%	12%	9%	
Distance covered (metres)	5,605	5,305	10,910	112,904	10,262
Low activity distance covered (metres)	2,877	2,924	5,801	64,764	5,886
Medium activity distance covered (metres)	1,051	866	1,917	17,621	1,602
High activity distance covered (metres)	1,677	1,515	3,192	30,517	2,774
Top speed (km/h)	22.52	20.93	22.52	28.11	20.83
Sprints	59	61	120	1235	139

Heat map



Direction of play →

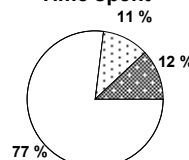
Distance



Activity



Time spent



FIFA does not vouch for the accuracy of technical statistics compiled in association with its competition results system partner.

THU 24 JUN 2010; 22:41 CET / 22:41 local time - Version 1

2010 FIFA World Cup South Africa™

FIFA Partners



FIFA World Cup Sponsors



National Supporters



Player Statistics



Group E

Denmark - Japan 1:3 (0:2)

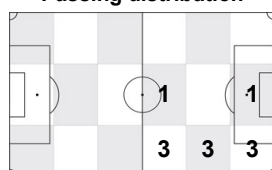
Rustenburg / Royal Bafokeng Stadium / RSA



Japan
8 Daisuke MATSUI
Midfield

	1st half	2nd half	Total	Team total	Team avg
Goal(s) scored	0	0	0	3	
Attempts on/off target	1	0	1	14	
Assist(s)	0	0	0	1	
Offside(s)	0	0	0	5	
Save(s)	0	0	0	5	
Yellow card(s)	0	0	0	2	
Red card	0	0	0	0	
Foul(s) committed	1	0	1	10	
Delivery/solo runs into the attacking third	3	0	3	36	2.8
Delivery/solo runs into the penalty area	2	0	2	9	0.9
Tackles gaining the ball	0	0	0	2	0.2
Tackles not gaining the ball	0	0	0	0	0.0
Tackles suffered losing the ball	0	0	0	3	0.3
Tackles suffered not losing the ball	0	0	0	7	0.7
Clearances Completed	0	0	0	2	0.2
Clearances Attempted	0	0	0	10	1.0

Passing distribution



Direction of play →

Received passing distribution

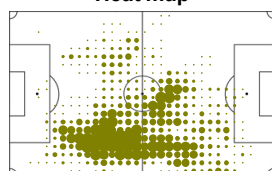


Direction of play →

Activities

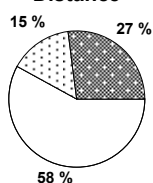
	1st half	2nd half	Total	Team total	Team avg
Total time played (mins)	47'04"	28'44"	75'48"		
Low activity time spent (%)	81%	80%	81%	82%	
Medium activity time spent (%)	8%	9%	9%	9%	
High activity time spent (%)	11%	11%	10%	9%	
Distance covered (metres)	5,537	3,473	9,010	112,904	10,262
Low activity distance covered (metres)	3,240	1,995	5,235	64,764	5,886
Medium activity distance covered (metres)	866	528	1,394	17,621	1,602
High activity distance covered (metres)	1,432	950	2,382	30,517	2,774
Top speed (km/h)	20.83	21.56	21.56	28.11	20.83
Sprints	63	44	107	1235	139

Heat map

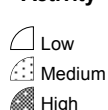


Direction of play →

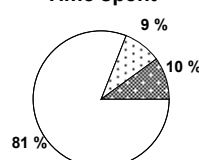
Distance



Activity



Time spent



FIFA does not vouch for the accuracy of technical statistics compiled in association with its competition results system partner.

THU 24 JUN 2010; 22:41 CET / 22:41 local time - Version 1

Page1/0

2010 FIFA World Cup South Africa™

FIFA Partners



FIFA World Cup Sponsors



National Supporters



Player Statistics



Group E

Denmark - Japan 1:3 (0:2)

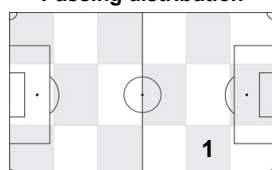
Rustenburg / Royal Bafokeng Stadium / RSA



Japan
9 Shinji OKAZAKI
Forward

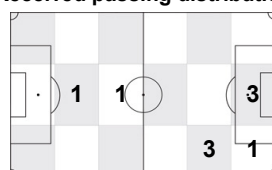
	1st half	2nd half	Total	Team total	Team avg
Goal(s) scored	0	1	1	3	
Attempts on/off target	0	2	2	14	
Assist(s)	0	0	0	1	
Offside(s)	0	0	0	5	
Save(s)	0	0	0	5	
Yellow card(s)	0	0	0	2	
Red card	0	0	0	0	
Foul(s) committed	0	0	0	10	
Delivery/solo runs into the attacking third	-	0	0	36	2.8
Delivery/solo runs into the penalty area	-	0	0	9	0.9
Tackles gaining the ball	-	0	0	2	0.2
Tackles not gaining the ball	-	0	0	0	0.0
Tackles suffered losing the ball	-	0	0	3	0.3
Tackles suffered not losing the ball	-	0	0	7	0.7
Clearances Completed	-	0	0	2	0.2
Clearances Attempted	-	0	0	10	1.0

Passing distribution



Direction of play →

Received passing distribution

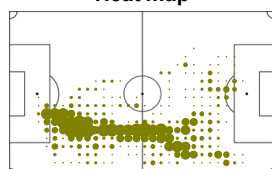


Direction of play →

Activities

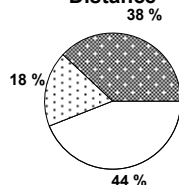
	1st half	2nd half	Total	Team total	Team avg
Total time played (mins)	0'00"	20'28"	20'28"		
Low activity time spent (%)	0%	71%	71%	82%	
Medium activity time spent (%)	0%	12%	12%	9%	
High activity time spent (%)	0%	17%	17%	9%	
Distance covered (metres)	-	2,514	2,514	112,904	10,262
Low activity distance covered (metres)	-	1,104	1,104	64,764	5,886
Medium activity distance covered (metres)	-	440	440	17,621	1,602
High activity distance covered (metres)	-	970	970	30,517	2,774
Top speed (km/h)	-	20.96	20.96	28.11	20.83
Sprints	-	52	52	1235	139

Heat map



Direction of play →

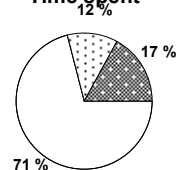
Distance



Activity



Time spent



FIFA does not vouch for the accuracy of technical statistics compiled in association with its competition results system partner.

THU 24 JUN 2010; 22:41 CET / 22:41 local time - Version 1

Page1/0

2010 FIFA World Cup South Africa™

FIFA Partners



FIFA World Cup Sponsors



National Supporters



Player Statistics



Group E

Denmark - Japan 1:3 (0:2)

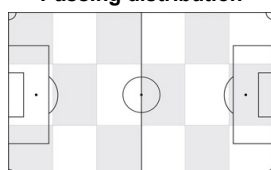
Rustenburg / Royal Bafokeng Stadium / RSA



Japan
15 Yasuyuki KONNO
Defender

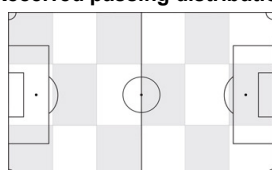
	1st half	2nd half	Total	Team total	Team avg
Goal(s) scored	0	0	0	3	
Attempts on/off target	0	0	0	14	
Assist(s)	0	0	0	1	
Offside(s)	0	0	0	5	
Save(s)	0	0	0	5	
Yellow card(s)	0	0	0	2	
Red card	0	0	0	0	
Foul(s) committed	0	0	0	10	
Delivery/solo runs into the attacking third	-	-	-	36	2.8
Delivery/solo runs into the penalty area	-	-	-	9	0.9
Tackles gaining the ball	-	-	-	2	0.2
Tackles not gaining the ball	-	-	-	0	0.0
Tackles suffered losing the ball	-	-	-	3	0.3
Tackles suffered not losing the ball	-	-	-	7	0.7
Clearances Completed	-	-	-	2	0.2
Clearances Attempted	-	-	-	10	1.0

Passing distribution



Direction of play →

Received passing distribution

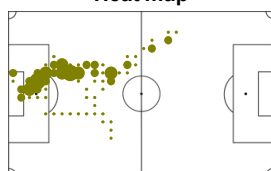


Direction of play →

Activities

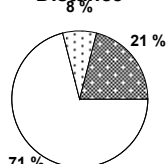
	1st half	2nd half	Total	Team total	Team avg
Total time played (mins)	0'00"	6'22"	6'22"		
Low activity time spent (%)	0%	91%	91%	82%	
Medium activity time spent (%)	0%	3%	3%	9%	
High activity time spent (%)	0%	6%	6%	9%	
Distance covered (metres)	-	521	521	112,904	10,262
Low activity distance covered (metres)	-	369	369	64,764	5,886
Medium activity distance covered (metres)	-	43	43	17,621	1,602
High activity distance covered (metres)	-	109	109	30,517	2,774
Top speed (km/h)	-	19.77	19.77	28.11	20.83
Sprints	-	4	4	1235	139

Heat map



Direction of play →

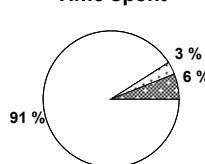
Distance



Activity



Time spent



FIFA does not vouch for the accuracy of technical statistics compiled in association with its competition results system partner.

THU 24 JUN 2010; 22:41 CET / 22:41 local time - Version 1

Page1/0

2010 FIFA World Cup South Africa™

FIFA Partners



FIFA World Cup Sponsors



National Supporters



Player Statistics



Group E

Denmark - Japan 1:3 (0:2)

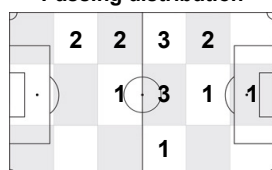
Rustenburg / Royal Bafokeng Stadium / RSA



Japan
16 Yoshito OKUBO
Forward

	1st half	2nd half	Total	Team total	Team avg
Goal(s) scored	0	0	0	3	
Attempts on/off target	0	2	2	14	
Assist(s)	0	0	0	1	
Offside(s)	0	0	0	5	
Save(s)	0	0	0	5	
Yellow card(s)	0	0	0	2	
Red card	0	0	0	0	
Foul(s) committed	2	0	2	10	
Delivery/solo runs into the attacking third	0	2	2	36	2.8
Delivery/solo runs into the penalty area	0	1	1	9	0.9
Tackles gaining the ball	0	0	0	2	0.2
Tackles not gaining the ball	0	0	0	0	0.0
Tackles suffered losing the ball	0	1	1	3	0.3
Tackles suffered not losing the ball	1	0	1	7	0.7
Clearances Completed	0	0	0	2	0.2
Clearances Attempted	0	0	0	10	1.0

Passing distribution



Direction of play →

Received passing distribution

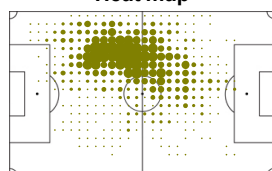


Direction of play →

Activities

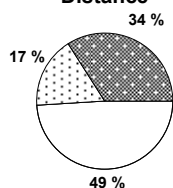
	1st half	2nd half	Total	Team total	Team avg
Total time played (mins)	47'04"	42'50"	89'54"		
Low activity time spent (%)	75%	76%	76%	82%	
Medium activity time spent (%)	11%	10%	11%	9%	
High activity time spent (%)	14%	14%	13%	9%	
Distance covered (metres)	6,002	5,291	11,293	112,904	10,262
Low activity distance covered (metres)	2,928	2,590	5,518	64,764	5,886
Medium activity distance covered (metres)	1,071	874	1,945	17,621	1,602
High activity distance covered (metres)	2,002	1,828	3,830	30,517	2,774
Top speed (km/h)	21.48	22.81	22.81	28.11	20.83
Sprints	85	68	153	1235	139

Heat map

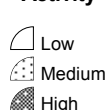


Direction of play →

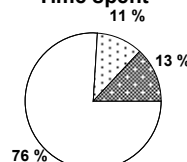
Distance



Activity



Time spent



FIFA does not vouch for the accuracy of technical statistics compiled in association with its competition results system partner.

THU 24 JUN 2010; 22:41 CET / 22:41 local time - Version 1

Page1/0

2010 FIFA World Cup South Africa™

FIFA Partners



FIFA World Cup Sponsors



National Supporters



Player Statistics



Group E

Denmark - Japan 1:3 (0:2)

Rustenburg / Royal Bafokeng Stadium / RSA



Japan
17 Makoto HASEBE
Midfield

	1st half	2nd half	Total	Team total	Team avg
Goal(s) scored	0	0	0	3	
Attempts on/off target	1	0	1	14	
Assist(s)	0	0	0	1	
Offside(s)	0	0	0	5	
Save(s)	0	0	0	5	
Yellow card(s)	0	0	0	2	
Red card	0	0	0	0	
Foul(s) committed	1	2	3	10	
Delivery/solo runs into the attacking third	2	1	3	36	2.8
Delivery/solo runs into the penalty area	0	0	0	9	0.9
Tackles gaining the ball	0	1	1	2	0.2
Tackles not gaining the ball	0	0	0	0	0.0
Tackles suffered losing the ball	0	0	0	3	0.3
Tackles suffered not losing the ball	3	0	3	7	0.7
Clearances Completed	0	1	1	2	0.2
Clearances Attempted	1	3	4	10	1.0

Passing distribution



Direction of play →

Received passing distribution

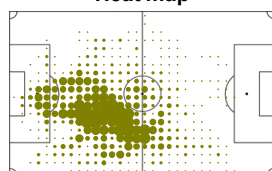


Direction of play →

Activities

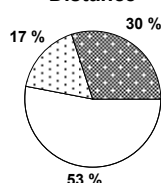
	1st half	2nd half	Total	Team total	Team avg
Total time played (mins)	47'04"	49'12"	96'16"		
Low activity time spent (%)	77%	77%	77%	82%	
Medium activity time spent (%)	11%	11%	11%	9%	
High activity time spent (%)	12%	12%	12%	9%	
Distance covered (metres)	5,819	5,654	11,473	112,904	10,262
Low activity distance covered (metres)	3,064	3,068	6,132	64,764	5,886
Medium activity distance covered (metres)	1,030	957	1,987	17,621	1,602
High activity distance covered (metres)	1,725	1,629	3,354	30,517	2,774
Top speed (km/h)	20.83	20.83	20.83	28.11	20.83
Sprints	80	47	127	1235	139

Heat map



Direction of play →

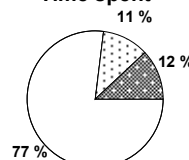
Distance



Activity



Time spent



FIFA does not vouch for the accuracy of technical statistics compiled in association with its competition results system partner.

THU 24 JUN 2010; 22:41 CET / 22:41 local time - Version 1

Page1/0

2010 FIFA World Cup South Africa™

FIFA Partners



FIFA World Cup Sponsors



National Supporters



Player Statistics



Group E

Denmark - Japan 1:3 (0:2)

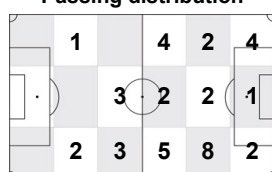
Rustenburg / Royal Bafokeng Stadium / RSA



Japan
18 Keisuke HONDA
Midfield

	1st half	2nd half	Total	Team total	Team avg
Goal(s) scored	1	0	1	3	
Attempts on/off target	1	1	2	14	
Assist(s)	0	1	1	1	
Offside(s)	0	4	4	5	
Save(s)	0	0	0	5	
Yellow card(s)	0	0	0	2	
Red card	0	0	0	0	
Foul(s) committed	1	1	2	10	
Delivery/solo runs into the attacking third	1	1	2	36	2.8
Delivery/solo runs into the penalty area	1	2	3	9	0.9
Tackles gaining the ball	0	0	0	2	0.2
Tackles not gaining the ball	0	0	0	0	0.0
Tackles suffered losing the ball	2	0	2	3	0.3
Tackles suffered not losing the ball	1	0	1	7	0.7
Clearances Completed	0	0	0	2	0.2
Clearances Attempted	0	0	0	10	1.0

Passing distribution



Direction of play →

Received passing distribution

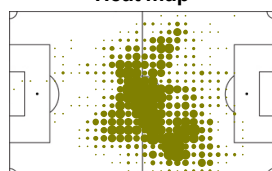


Direction of play →

Activities

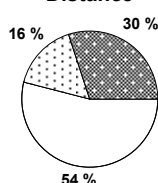
	1st half	2nd half	Total	Team total	Team avg
Total time played (mins)	47'04"	49'12"	96'16"		
Low activity time spent (%)	79%	80%	79%	82%	
Medium activity time spent (%)	11%	9%	10%	9%	
High activity time spent (%)	10%	11%	11%	9%	
Distance covered (metres)	5,575	5,479	11,054	112,904	10,262
Low activity distance covered (metres)	2,991	2,956	5,947	64,764	5,886
Medium activity distance covered (metres)	977	842	1,819	17,621	1,602
High activity distance covered (metres)	1,607	1,681	3,288	30,517	2,774
Top speed (km/h)	19.87	28.11	28.11	28.11	20.83
Sprints	63	73	136	1235	139

Heat map



Direction of play →

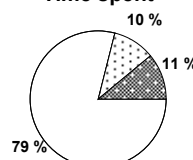
Distance



Activity



Time spent



FIFA does not vouch for the accuracy of technical statistics compiled in association with its competition results system partner.

THU 24 JUN 2010; 22:41 CET / 22:41 local time - Version 1

Page1/0

2010 FIFA World Cup South Africa™

FIFA Partners



FIFA World Cup Sponsors



National Supporters



Player Statistics



Group E

Denmark - Japan 1:3 (0:2)

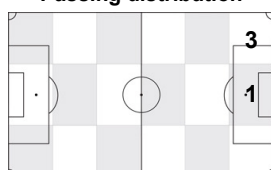
Rustenburg / Royal Bafokeng Stadium / RSA



Japan
20 Junichi INAMOTO
 Midfield

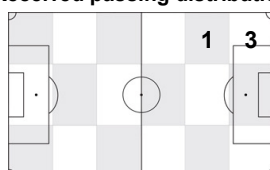
	1st half	2nd half	Total	Team total	Team avg
Goal(s) scored	0	0	0	3	
Attempts on/off target	0	0	0	14	
Assist(s)	0	0	0	1	
Offside(s)	0	0	0	5	
Save(s)	0	0	0	5	
Yellow card(s)	0	0	0	2	
Red card	0	0	0	0	
Foul(s) committed	0	0	0	10	
Delivery/solo runs into the attacking third	-	0	0	36	2.8
Delivery/solo runs into the penalty area	-	1	1	9	0.9
Tackles gaining the ball	-	0	0	2	0.2
Tackles not gaining the ball	-	0	0	0	0.0
Tackles suffered losing the ball	-	0	0	3	0.3
Tackles suffered not losing the ball	-	0	0	7	0.7
Clearances Completed	-	0	0	2	0.2
Clearances Attempted	-	0	0	10	1.0

Passing distribution



Direction of play →

Received passing distribution

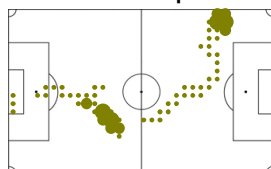


Direction of play →

Activities

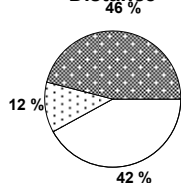
	1st half	2nd half	Total	Team total	Team avg
Total time played (mins)	0'00"	3'52"	3'52"		
Low activity time spent (%)	0%	78%	78%	82%	
Medium activity time spent (%)	0%	7%	7%	9%	
High activity time spent (%)	0%	15%	15%	9%	
Distance covered (metres)	-	414	414	112,904	10,262
Low activity distance covered (metres)	-	173	173	64,764	5,886
Medium activity distance covered (metres)	-	51	51	17,621	1,602
High activity distance covered (metres)	-	189	189	30,517	2,774
Top speed (km/h)	-	17.98	17.98	28.11	20.83
Sprints	-	11	11	1235	139

Heat map



Direction of play →

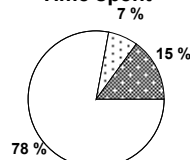
Distance



Activity



Time spent



FIFA does not vouch for the accuracy of technical statistics compiled in association with its competition results system partner.

THU 24 JUN 2010; 22:41 CET / 22:41 local time - Version 1

Page1/0

2010 FIFA World Cup South Africa™

FIFA Partners



FIFA World Cup Sponsors



National Supporters



Player Statistics



Group E

Denmark - Japan 1:3 (0:2)

Rustenburg / Royal Bafokeng Stadium / RSA



Japan
21 Eiji KAWASHIMA
Goalkeeper

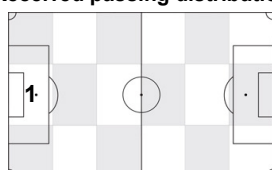
	1st half	2nd half	Total	Team total	Team avg
Goal(s) scored	0	0	0	3	
Attempts on/off target	0	0	0	14	
Assist(s)	0	0	0	1	
Offside(s)	0	0	0	5	
Save(s)	2	3	5	5	
Yellow card(s)	0	0	0	2	
Red card	0	0	0	0	
Foul(s) committed	0	0	0	10	
Delivery/solo runs into the attacking third	2	6	8	36	2.8
Delivery/solo runs into the penalty area	0	0	0	9	0.9
Tackles gaining the ball	0	0	0	2	0.2
Tackles not gaining the ball	0	0	0	0	0.0
Tackles suffered losing the ball	0	0	0	3	0.3
Tackles suffered not losing the ball	0	0	0	7	0.7
Clearances Completed	0	0	0	2	0.2
Clearances Attempted	0	0	0	10	1.0

Passing distribution



Direction of play →

Received passing distribution

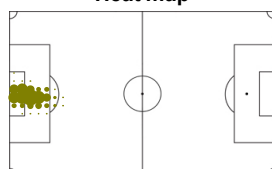


Direction of play →

Activities

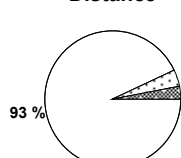
	1st half	2nd half	Total	Team total	Team avg
Total time played (mins)	47'04"	49'12"	96'16"		
Low activity time spent (%)	99%	99%	99%	82%	
Medium activity time spent (%)	1%	1%	1%	9%	
High activity time spent (%)	0%	0%	0%	9%	
Distance covered (metres)	2,159	2,264	4,423	112,904	10,262
Low activity distance covered (metres)	1,966	2,134	4,100	64,764	5,886
Medium activity distance covered (metres)	103	67	170	17,621	1,602
High activity distance covered (metres)	89	63	152	30,517	2,774
Top speed (km/h)	12.91	12.47	12.91	28.11	20.83
Sprints	2	3	5	1235	139

Heat map



Direction of play →

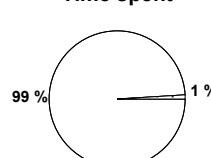
Distance



Activity



Time spent



FIFA does not vouch for the accuracy of technical statistics compiled in association with its competition results system partner.

THU 24 JUN 2010; 22:41 CET / 22:41 local time - Version 1

Page1/0

2010 FIFA World Cup South Africa™

FIFA Partners



FIFA World Cup Sponsors



National Supporters



Player Statistics



Group E

Denmark - Japan 1:3 (0:2)

Rustenburg / Royal Bafokeng Stadium / RSA



Japan
22 Yuji NAKAZAWA
Defender

	1st half	2nd half	Total	Team total	Team avg
Goal(s) scored	0	0	0	3	
Attempts on/off target	0	0	0	14	
Assist(s)	0	0	0	1	
Offside(s)	0	0	0	5	
Save(s)	0	0	0	5	
Yellow card(s)	0	0	0	2	
Red card	0	0	0	0	
Foul(s) committed	0	0	0	10	
Delivery/solo runs into the attacking third	0	1	1	36	2.8
Delivery/solo runs into the penalty area	0	0	0	9	0.9
Tackles gaining the ball	0	0	0	2	0.2
Tackles not gaining the ball	0	0	0	0	0.0
Tackles suffered losing the ball	0	0	0	3	0.3
Tackles suffered not losing the ball	0	0	0	7	0.7
Clearances Completed	0	0	0	2	0.2
Clearances Attempted	0	1	1	10	1.0

Passing distribution



Direction of play →

Received passing distribution

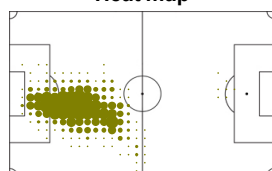


Direction of play →

Activities

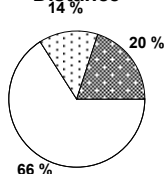
	1st half	2nd half	Total	Team total	Team avg
Total time played (mins)	47'04"	49'12"	96'16"		
Low activity time spent (%)	85%	89%	87%	82%	
Medium activity time spent (%)	7%	7%	7%	9%	
High activity time spent (%)	8%	4%	6%	9%	
Distance covered (metres)	4,863	4,474	9,337	112,904	10,262
Low activity distance covered (metres)	3,011	3,186	6,197	64,764	5,886
Medium activity distance covered (metres)	712	639	1,351	17,621	1,602
High activity distance covered (metres)	1,139	650	1,789	30,517	2,774
Top speed (km/h)	18.08	19.87	19.87	28.11	20.83
Sprints	43	20	63	1235	139

Heat map



Direction of play →

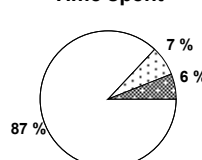
Distance



Activity



Time spent



FIFA does not vouch for the accuracy of technical statistics compiled in association with its competition results system partner.

THU 24 JUN 2010; 22:41 CET / 22:41 local time - Version 1

Page1/0

2010 FIFA World Cup South Africa™

FIFA Partners



FIFA World Cup Sponsors



National Supporters



