

# Player Statistics



Round of 16

**Brazil - Chile 3:0 (2:0)**

Johannesburg / Ellis Park Stadium / RSA



**Brazil**  
**1 JULIO CESAR**  
Goalkeeper

	1st half	2nd half	Total	Team total	Team avg
Goal(s) scored	0	0	0	3	
Attempts on/off target	0	0	0	17	
Assist(s)	0	0	0	3	
Offside(s)	0	0	0	1	
Save(s)	1	1	2	2	
Yellow card(s)	0	0	0	2	
Red card	0	0	0	0	
Foul(s) committed	0	0	0	14	
Delivery/solo runs into the attacking third	1	1	2	45	4.3
Delivery/solo runs into the penalty area	0	0	0	15	1.5
Tackles gaining the ball	0	0	0	3	0.3
Tackles not gaining the ball	0	0	0	2	0.2
Tackles suffered losing the ball	0	0	0	2	0.2
Tackles suffered not losing the ball	0	0	0	1	0.1
Clearances Completed	0	0	0	4	0.4
Clearances Attempted	0	0	0	11	1.1

Passing distribution



Direction of play →

Received passing distribution

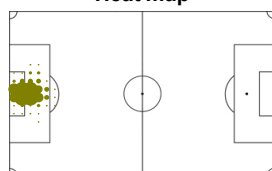


Direction of play →

## Activities

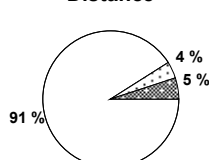
	1st half	2nd half	Total	Team total	Team avg
Total time played (mins)	46'05"	47'14"	93'19"		
Low activity time spent (%)	99%	98%	98%	85%	
Medium activity time spent (%)	1%	1%	1%	7%	
High activity time spent (%)	0%	1%	1%	8%	
Distance covered (metres)	1,899	2,008	3,907	100,549	9,141
Low activity distance covered (metres)	1,755	1,803	3,558	62,015	5,638
Medium activity distance covered (metres)	64	92	156	14,137	1,285
High activity distance covered (metres)	80	113	193	24,398	2,218
Top speed (km/h)	14.07	17.16	17.16	29.41	21.52
Sprints	2	4	6	1005	114

Heat map



Direction of play →

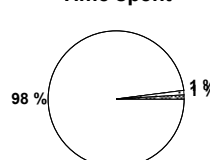
Distance



Activity



Time spent



FIFA does not vouch for the accuracy of technical statistics compiled in association with its competition results system partner.

MON 28 JUN 2010; 22:31 CET / 22:31 local time - Version 1

Page1/0

2010 FIFA World Cup South Africa™

FIFA Partners



FIFA World Cup Sponsors



National Supporters



# Player Statistics



Round of 16

## Brazil - Chile 3:0 (2:0)

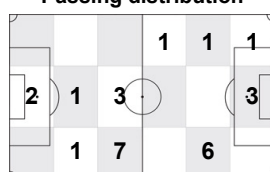
Johannesburg / Ellis Park Stadium / RSA



**Brazil**  
**2 MAICON**  
Defender

	1st half	2nd half	Total	Team total	Team avg
Goal(s) scored	0	0	0	3	
Attempts on/off target	0	0	0	17	
Assist(s)	1	0	1	3	
Offside(s)	0	0	0	1	
Save(s)	0	0	0	2	
Yellow card(s)	0	0	0	2	
Red card	0	0	0	0	
Foul(s) committed	0	0	0	14	
Delivery/solo runs into the attacking third	3	3	6	45	4.3
Delivery/solo runs into the penalty area	4	0	4	15	1.5
Tackles gaining the ball	0	0	0	3	0.3
Tackles not gaining the ball	0	0	0	2	0.2
Tackles suffered losing the ball	1	0	1	2	0.2
Tackles suffered not losing the ball	0	0	0	1	0.1
Clearances Completed	0	0	0	4	0.4
Clearances Attempted	0	1	1	11	1.1

Passing distribution



Direction of play →

Received passing distribution

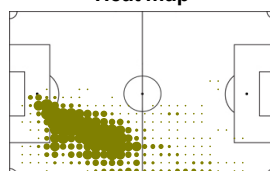


Direction of play →

## Activities

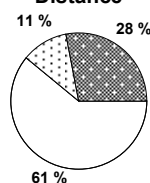
	1st half	2nd half	Total	Team total	Team avg
Total time played (mins)	46'05"	47'14"	93'19"		
Low activity time spent (%)	85%	85%	85%	85%	
Medium activity time spent (%)	6%	6%	6%	7%	
High activity time spent (%)	9%	9%	9%	8%	
Distance covered (metres)	4,703	4,646	9,349	100,549	9,141
Low activity distance covered (metres)	2,745	2,913	5,658	62,015	5,638
Medium activity distance covered (metres)	544	525	1,069	14,137	1,285
High activity distance covered (metres)	1,413	1,209	2,622	24,398	2,218
Top speed (km/h)	23.71	26.65	26.65	29.41	21.52
Sprints	58	47	105	1005	114

Heat map



Direction of play →

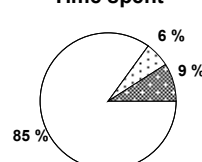
Distance



Activity



Time spent



FIFA does not vouch for the accuracy of technical statistics compiled in association with its competition results system partner.

MON 28 JUN 2010; 22:31 CET / 22:31 local time - Version 1

Page1/0

2010 FIFA World Cup South Africa™

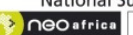
FIFA Partners



FIFA World Cup Sponsors



National Supporters



# Player Statistics



Round of 16

**Brazil - Chile 3:0 (2:0)**

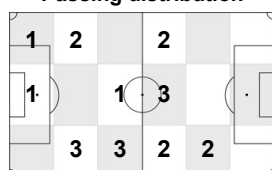
Johannesburg / Ellis Park Stadium / RSA



**Brazil**  
**3 LUCIO**  
Defender

	1st half	2nd half	Total	Team total	Team avg
Goal(s) scored	0	0	0	3	
Attempts on/off target	0	0	0	17	
Assist(s)	0	0	0	3	
Offside(s)	0	0	0	1	
Save(s)	0	0	0	2	
Yellow card(s)	0	0	0	2	
Red card	0	0	0	0	
Foul(s) committed	0	0	0	14	
Delivery/solo runs into the attacking third	1	1	2	45	4.3
Delivery/solo runs into the penalty area	0	0	0	15	1.5
Tackles gaining the ball	0	0	0	3	0.3
Tackles not gaining the ball	0	0	0	2	0.2
Tackles suffered losing the ball	0	0	0	2	0.2
Tackles suffered not losing the ball	0	0	0	1	0.1
Clearances Completed	2	0	2	4	0.4
Clearances Attempted	4	0	4	11	1.1

Passing distribution



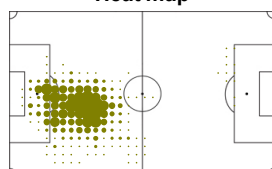
Received passing distribution



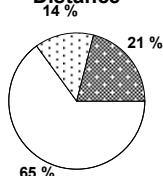
## Activities

	1st half	2nd half	Total	Team total	Team avg
Total time played (mins)	46'05"	47'14"	93'19"		
Low activity time spent (%)	86%	88%	87%	85%	
Medium activity time spent (%)	7%	6%	7%	7%	
High activity time spent (%)	7%	6%	6%	8%	
Distance covered (metres)	4,523	4,232	8,755	100,549	9,141
Low activity distance covered (metres)	2,878	2,773	5,651	62,015	5,638
Medium activity distance covered (metres)	668	560	1,228	14,137	1,285
High activity distance covered (metres)	977	899	1,876	24,398	2,218
Top speed (km/h)	20.59	20.31	20.59	29.41	21.52
Sprints	34	37	71	1005	114

Heat map



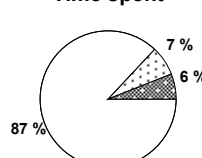
Distance



Activity



Time spent



FIFA does not vouch for the accuracy of technical statistics compiled in association with its competition results system partner.

MON 28 JUN 2010; 22:31 CET / 22:31 local time - Version 1

Page1/0

2010 FIFA World Cup South Africa™

FIFA Partners



FIFA World Cup Sponsors



National Supporters



# Player Statistics



Round of 16

## Brazil - Chile 3:0 (2:0)

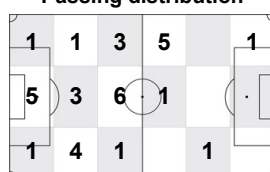
Johannesburg / Ellis Park Stadium / RSA



**Brazil**  
**4 JUAN**  
Defender

	1st half	2nd half	Total	Team total	Team avg
Goal(s) scored	1	0	1	3	
Attempts on/off target	2	0	2	17	
Assist(s)	0	0	0	3	
Offside(s)	0	0	0	1	
Save(s)	0	0	0	2	
Yellow card(s)	0	0	0	2	
Red card	0	0	0	0	
Foul(s) committed	0	0	0	14	
Delivery/solo runs into the attacking third	0	2	2	45	4.3
Delivery/solo runs into the penalty area	0	0	0	15	1.5
Tackles gaining the ball	1	0	1	3	0.3
Tackles not gaining the ball	1	0	1	2	0.2
Tackles suffered losing the ball	0	0	0	2	0.2
Tackles suffered not losing the ball	0	0	0	1	0.1
Clearances Completed	1	0	1	4	0.4
Clearances Attempted	1	1	2	11	1.1

Passing distribution



Direction of play →

Received passing distribution

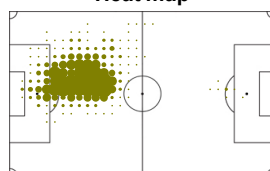


Direction of play →

### Activities

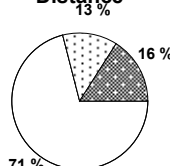
	1st half	2nd half	Total	Team total	Team avg
Total time played (mins)	46'05"	47'14"	93'19"		
Low activity time spent (%)	88%	90%	89%	85%	
Medium activity time spent (%)	7%	5%	6%	7%	
High activity time spent (%)	5%	5%	5%	8%	
Distance covered (metres)	4,266	4,057	8,323	100,549	9,141
Low activity distance covered (metres)	2,910	2,965	5,875	62,015	5,638
Medium activity distance covered (metres)	608	495	1,103	14,137	1,285
High activity distance covered (metres)	748	597	1,345	24,398	2,218
Top speed (km/h)	19.66	19.79	19.79	29.41	21.52
Sprints	24	21	45	1005	114

Heat map



Direction of play →

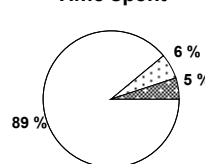
Distance



Activity



Time spent



FIFA does not vouch for the accuracy of technical statistics compiled in association with its competition results system partner.

MON 28 JUN 2010; 22:31 CET / 22:31 local time - Version 1

Page1/0

2010 FIFA World Cup South Africa™

FIFA Partners



FIFA World Cup Sponsors



National Supporters



# Player Statistics



Round of 16

**Brazil - Chile 3:0 (2:0)**

Johannesburg / Ellis Park Stadium / RSA



**Brazil**  
**6 MICHEL BASTOS**  
Defender

	1st half	2nd half	Total	Team total	Team avg
Goal(s) scored	0	0	0	3	
Attempts on/off target	1	1	2	17	
Assist(s)	0	0	0	3	
Offside(s)	0	0	0	1	
Save(s)	0	0	0	2	
Yellow card(s)	0	0	0	2	
Red card	0	0	0	0	
Foul(s) committed	1	0	1	14	
Delivery/solo runs into the attacking third	2	2	4	45	4.3
Delivery/solo runs into the penalty area	1	2	3	15	1.5
Tackles gaining the ball	0	0	0	3	0.3
Tackles not gaining the ball	0	0	0	2	0.2
Tackles suffered losing the ball	0	0	0	2	0.2
Tackles suffered not losing the ball	1	0	1	1	0.1
Clearances Completed	0	0	0	4	0.4
Clearances Attempted	0	2	2	11	1.1

Passing distribution



Direction of play →

Received passing distribution

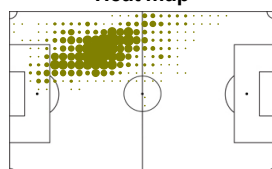


Direction of play →

## Activities

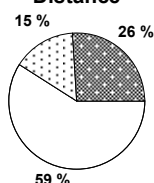
	1st half	2nd half	Total	Team total	Team avg
Total time played (mins)	46'05"	47'14"	93'19"		
Low activity time spent (%)	84%	83%	83%	85%	
Medium activity time spent (%)	8%	8%	8%	7%	
High activity time spent (%)	8%	9%	9%	8%	
Distance covered (metres)	4,682	4,747	9,429	100,549	9,141
Low activity distance covered (metres)	2,782	2,770	5,552	62,015	5,638
Medium activity distance covered (metres)	740	710	1,450	14,137	1,285
High activity distance covered (metres)	1,159	1,267	2,426	24,398	2,218
Top speed (km/h)	21.14	29.41	29.41	29.41	21.52
Sprints	47	65	112	1005	114

Heat map

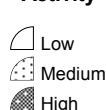


Direction of play →

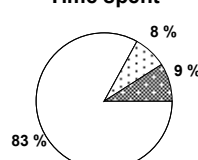
Distance



Activity



Time spent



FIFA does not vouch for the accuracy of technical statistics compiled in association with its competition results system partner.

MON 28 JUN 2010; 22:31 CET / 22:31 local time - Version 1

Page1/0

2010 FIFA World Cup South Africa™

FIFA Partners



FIFA World Cup Sponsors



National Supporters



# Player Statistics



Round of 16

**Brazil - Chile 3:0 (2:0)**

Johannesburg / Ellis Park Stadium / RSA



**Brazil**  
**8 GILBERTO SILVA**  
Midfield

	1st half	2nd half	Total	Team total	Team avg
Goal(s) scored	0	0	0	3	
Attempts on/off target	1	0	1	17	
Assist(s)	0	0	0	3	
Offside(s)	0	0	0	1	
Save(s)	0	0	0	2	
Yellow card(s)	0	0	0	2	
Red card	0	0	0	0	
Foul(s) committed	2	2	4	14	
Delivery/solo runs into the attacking third	1	0	1	45	4.3
Delivery/solo runs into the penalty area	0	0	0	15	1.5
Tackles gaining the ball	0	1	1	3	0.3
Tackles not gaining the ball	0	0	0	2	0.2
Tackles suffered losing the ball	0	0	0	2	0.2
Tackles suffered not losing the ball	0	0	0	1	0.1
Clearances Completed	0	1	1	4	0.4
Clearances Attempted	0	1	1	11	1.1

Passing distribution



Direction of play →

Received passing distribution

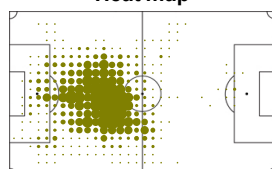


Direction of play →

## Activities

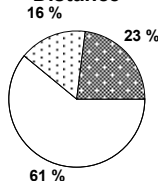
	1st half	2nd half	Total	Team total	Team avg
Total time played (mins)	46'05"	47'14"	93'19"		
Low activity time spent (%)	83%	82%	82%	85%	
Medium activity time spent (%)	9%	8%	9%	7%	
High activity time spent (%)	8%	10%	9%	8%	
Distance covered (metres)	5,182	5,254	10,436	100,549	9,141
Low activity distance covered (metres)	3,165	3,150	6,315	62,015	5,638
Medium activity distance covered (metres)	848	776	1,624	14,137	1,285
High activity distance covered (metres)	1,169	1,328	2,497	24,398	2,218
Top speed (km/h)	19.90	23.21	23.21	29.41	21.52
Sprints	28	42	70	1005	114

Heat map

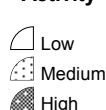


Direction of play →

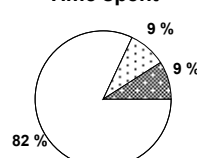
Distance



Activity



Time spent



FIFA does not vouch for the accuracy of technical statistics compiled in association with its competition results system partner.

MON 28 JUN 2010; 22:31 CET / 22:31 local time - Version 1

Page1/0

2010 FIFA World Cup South Africa™

FIFA Partners



FIFA World Cup Sponsors



National Supporters



# Player Statistics



Round of 16

**Brazil - Chile 3:0 (2:0)**

Johannesburg / Ellis Park Stadium / RSA



**Brazil**  
**9 LUIS FABIANO**  
Forward

	1st half	2nd half	Total	Team total	Team avg
Goal(s) scored	1	0	1	3	
Attempts on/off target	3	0	3	17	
Assist(s)	0	0	0	3	
Offside(s)	0	0	0	1	
Save(s)	0	0	0	2	
Yellow card(s)	0	0	0	2	
Red card	0	0	0	0	
Foul(s) committed	0	1	1	14	
Delivery/solo runs into the attacking third	1	1	2	45	4.3
Delivery/solo runs into the penalty area	1	0	1	15	1.5
Tackles gaining the ball	0	0	0	3	0.3
Tackles not gaining the ball	0	0	0	2	0.2
Tackles suffered losing the ball	0	0	0	2	0.2
Tackles suffered not losing the ball	0	0	0	1	0.1
Clearances Completed	0	0	0	4	0.4
Clearances Attempted	0	0	0	11	1.1

Passing distribution



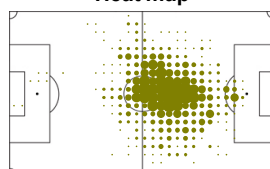
Received passing distribution



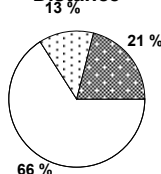
## Activities

	1st half	2nd half	Total	Team total	Team avg
Total time played (mins)	46'05"	30'17"	76'22"		
Low activity time spent (%)	87%	88%	88%	85%	
Medium activity time spent (%)	7%	5%	6%	7%	
High activity time spent (%)	6%	7%	6%	8%	
Distance covered (metres)	4,251	2,758	7,009	100,549	9,141
Low activity distance covered (metres)	2,785	1,836	4,621	62,015	5,638
Medium activity distance covered (metres)	555	336	891	14,137	1,285
High activity distance covered (metres)	911	586	1,497	24,398	2,218
Top speed (km/h)	21.91	20.86	21.91	29.41	21.52
Sprints	48	27	75	1005	114

Heat map



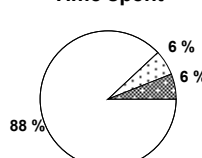
Distance



Activity



Time spent



FIFA does not vouch for the accuracy of technical statistics compiled in association with its competition results system partner.

MON 28 JUN 2010; 22:31 CET / 22:31 local time - Version 1

Page1/0

2010 FIFA World Cup South Africa™

FIFA Partners



FIFA World Cup Sponsors



National Supporters



# Player Statistics



Round of 16

**Brazil - Chile 3:0 (2:0)**

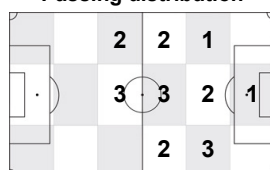
Johannesburg / Ellis Park Stadium / RSA



**Brazil**  
**10 KAKA**  
Midfield

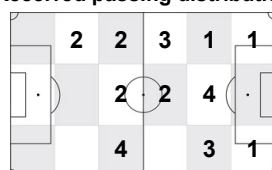
	1st half	2nd half	Total	Team total	Team avg
Goal(s) scored	0	0	0	3	
Attempts on/off target	1	1	2	17	
Assist(s)	1	0	1	3	
Offside(s)	0	0	0	1	
Save(s)	0	0	0	2	
Yellow card(s)	1	0	1	2	
Red card	0	0	0	0	
Foul(s) committed	2	1	3	14	
Delivery/solo runs into the attacking third	2	1	3	45	4.3
Delivery/solo runs into the penalty area	1	0	1	15	1.5
Tackles gaining the ball	0	0	0	3	0.3
Tackles not gaining the ball	0	0	0	2	0.2
Tackles suffered losing the ball	0	0	0	2	0.2
Tackles suffered not losing the ball	0	0	0	1	0.1
Clearances Completed	0	0	0	4	0.4
Clearances Attempted	0	0	0	11	1.1

Passing distribution



Direction of play →

Received passing distribution

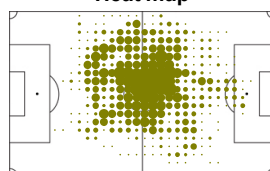


Direction of play →

## Activities

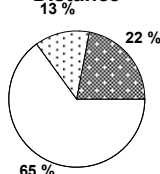
	1st half	2nd half	Total	Team total	Team avg
Total time played (mins)	46'05"	35'24"	81'29"		
Low activity time spent (%)	87%	84%	86%	85%	
Medium activity time spent (%)	7%	8%	7%	7%	
High activity time spent (%)	6%	8%	7%	8%	
Distance covered (metres)	4,702	3,724	8,426	100,549	9,141
Low activity distance covered (metres)	3,141	2,295	5,436	62,015	5,638
Medium activity distance covered (metres)	557	552	1,109	14,137	1,285
High activity distance covered (metres)	1,004	878	1,882	24,398	2,218
Top speed (km/h)	20.59	20.99	20.99	29.41	21.52
Sprints	45	34	79	1005	114

Heat map

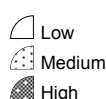


Direction of play →

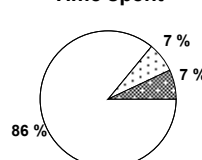
Distance



Activity



Time spent



FIFA does not vouch for the accuracy of technical statistics compiled in association with its competition results system partner.

MON 28 JUN 2010; 22:31 CET / 22:31 local time - Version 1

Page1/0

2010 FIFA World Cup South Africa™

FIFA Partners



FIFA World Cup Sponsors



National Supporters





# Player Statistics



Round of 16

**Brazil - Chile 3:0 (2:0)**

Johannesburg / Ellis Park Stadium / RSA



**Brazil**  
**11 ROBINHO**  
Forward

	1st half	2nd half	Total	Team total	Team avg
Goal(s) scored	0	1	1	3	
Attempts on/off target	0	2	2	17	
Assist(s)	0	0	0	3	
Offside(s)	0	1	1	1	
Save(s)	0	0	0	2	
Yellow card(s)	0	0	0	2	
Red card	0	0	0	0	
Foul(s) committed	1	0	1	14	
Delivery/solo runs into the attacking third	4	1	5	45	4.3
Delivery/solo runs into the penalty area	1	1	2	15	1.5
Tackles gaining the ball	0	0	0	3	0.3
Tackles not gaining the ball	0	0	0	2	0.2
Tackles suffered losing the ball	1	0	1	2	0.2
Tackles suffered not losing the ball	0	0	0	1	0.1
Clearances Completed	0	0	0	4	0.4
Clearances Attempted	0	0	0	11	1.1

Passing distribution



Direction of play →

Received passing distribution

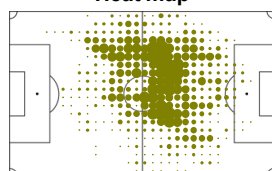


Direction of play →

## Activities

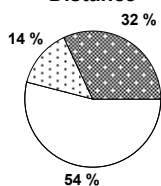
	1st half	2nd half	Total	Team total	Team avg
Total time played (mins)	46'05"	39'39"	85'44"		
Low activity time spent (%)	84%	79%	82%	85%	
Medium activity time spent (%)	6%	9%	8%	7%	
High activity time spent (%)	10%	12%	10%	8%	
Distance covered (metres)	4,652	4,357	9,009	100,549	9,141
Low activity distance covered (metres)	2,567	2,257	4,824	62,015	5,638
Medium activity distance covered (metres)	595	696	1,291	14,137	1,285
High activity distance covered (metres)	1,490	1,404	2,894	24,398	2,218
Top speed (km/h)	20.43	21.40	21.40	29.41	21.52
Sprints	78	70	148	1005	114

Heat map



Direction of play →

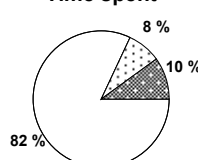
Distance



Activity



Time spent



FIFA does not vouch for the accuracy of technical statistics compiled in association with its competition results system partner.

MON 28 JUN 2010; 22:31 CET / 22:31 local time - Version 1

Page1/0

2010 FIFA World Cup South Africa™

FIFA Partners



FIFA World Cup Sponsors



National Supporters



# Player Statistics



Round of 16

**Brazil - Chile 3:0 (2:0)**

Johannesburg / Ellis Park Stadium / RSA



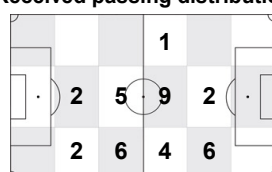
**Brazil**  
**13 DANI ALVES**  
Defender

	1st half	2nd half	Total	Team total	Team avg
Goal(s) scored	0	0	0	3	
Attempts on/off target	0	2	2	17	
Assist(s)	0	0	0	3	
Offside(s)	0	0	0	1	
Save(s)	0	0	0	2	
Yellow card(s)	0	0	0	2	
Red card	0	0	0	0	
Foul(s) committed	0	1	1	14	
Delivery/solo runs into the attacking third	4	6	10	45	4.3
Delivery/solo runs into the penalty area	2	0	2	15	1.5
Tackles gaining the ball	1	0	1	3	0.3
Tackles not gaining the ball	0	1	1	2	0.2
Tackles suffered losing the ball	0	0	0	2	0.2
Tackles suffered not losing the ball	0	0	0	1	0.1
Clearances Completed	0	0	0	4	0.4
Clearances Attempted	0	0	0	11	1.1

Passing distribution



Received passing distribution



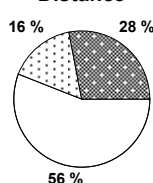
## Activities

	1st half	2nd half	Total	Team total	Team avg
Total time played (mins)	46'05"	47'14"	93'19"		
Low activity time spent (%)	80%	79%	80%	85%	
Medium activity time spent (%)	9%	9%	9%	7%	
High activity time spent (%)	11%	12%	11%	8%	
Distance covered (metres)	5,480	5,632	11,112	100,549	9,141
Low activity distance covered (metres)	3,023	3,177	6,200	62,015	5,638
Medium activity distance covered (metres)	918	853	1,771	14,137	1,285
High activity distance covered (metres)	1,539	1,602	3,141	24,398	2,218
Top speed (km/h)	23.24	22.80	23.24	29.41	21.52
Sprints	54	85	139	1005	114

Heat map



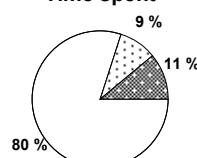
Distance



Activity



Time spent



FIFA does not vouch for the accuracy of technical statistics compiled in association with its competition results system partner.

MON 28 JUN 2010; 22:31 CET / 22:31 local time - Version 1

Page1/0

2010 FIFA World Cup South Africa™

FIFA Partners



FIFA World Cup Sponsors



National Supporters



# Player Statistics



Round of 16

**Brazil - Chile 3:0 (2:0)**

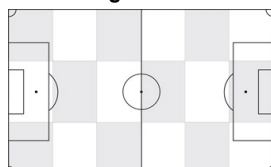
Johannesburg / Ellis Park Stadium / RSA



**Brazil**  
**16 GILBERTO MELO**  
 Defender

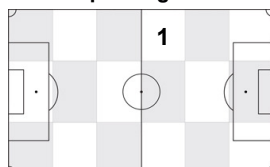
	1st half	2nd half	Total	Team total	Team avg
Goal(s) scored	0	0	0	3	
Attempts on/off target	0	0	0	17	
Assist(s)	0	0	0	3	
Offside(s)	0	0	0	1	
Save(s)	0	0	0	2	
Yellow card(s)	0	0	0	2	
Red card	0	0	0	0	
Foul(s) committed	0	0	0	14	
Delivery/solo runs into the attacking third	-	0	0	45	4.3
Delivery/solo runs into the penalty area	-	0	0	15	1.5
Tackles gaining the ball	-	0	0	3	0.3
Tackles not gaining the ball	-	0	0	2	0.2
Tackles suffered losing the ball	-	0	0	2	0.2
Tackles suffered not losing the ball	-	0	0	1	0.1
Clearances Completed	-	0	0	4	0.4
Clearances Attempted	-	0	0	11	1.1

Passing distribution



Direction of play →

Received passing distribution

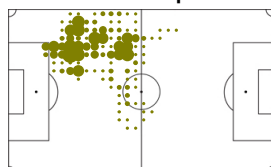


Direction of play →

## Activities

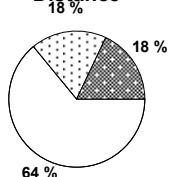
	1st half	2nd half	Total	Team total	Team avg
Total time played (mins)	0'00"	7'35"	7'35"		
Low activity time spent (%)	0%	84%	84%	85%	
Medium activity time spent (%)	0%	10%	10%	7%	
High activity time spent (%)	0%	6%	6%	8%	
Distance covered (metres)	-	810	810	100,549	9,141
Low activity distance covered (metres)	-	520	520	62,015	5,638
Medium activity distance covered (metres)	-	143	143	14,137	1,285
High activity distance covered (metres)	-	147	147	24,398	2,218
Top speed (km/h)	-	15.46	15.46	29.41	21.52
Sprints	-	3	3	1005	114

Heat map



Direction of play →

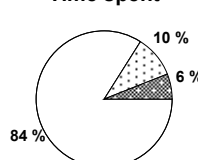
Distance



Activity



Time spent



FIFA does not vouch for the accuracy of technical statistics compiled in association with its competition results system partner.

MON 28 JUN 2010; 22:31 CET / 22:31 local time - Version 1

Page1/0

2010 FIFA World Cup South Africa™

FIFA Partners



FIFA World Cup Sponsors



National Supporters



# Player Statistics



Round of 16

## Brazil - Chile 3:0 (2:0)

Johannesburg / Ellis Park Stadium / RSA



**Brazil**  
**18 RAMIRES**  
Midfield

	1st half	2nd half	Total	Team total	Team avg
Goal(s) scored	0	0	0	3	
Attempts on/off target	1	1	2	17	
Assist(s)	0	1	1	3	
Offside(s)	0	0	0	1	
Save(s)	0	0	0	2	
Yellow card(s)	0	1	1	2	
Red card	0	0	0	0	
Foul(s) committed	0	1	1	14	
Delivery/solo runs into the attacking third	4	2	6	45	4.3
Delivery/solo runs into the penalty area	1	1	2	15	1.5
Tackles gaining the ball	0	0	0	3	0.3
Tackles not gaining the ball	0	0	0	2	0.2
Tackles suffered losing the ball	0	0	0	2	0.2
Tackles suffered not losing the ball	0	0	0	1	0.1
Clearances Completed	0	0	0	4	0.4
Clearances Attempted	1	0	1	11	1.1

Passing distribution



Direction of play →

Received passing distribution

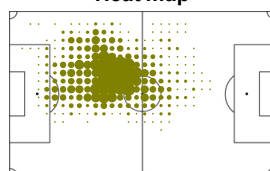


Direction of play →

## Activities

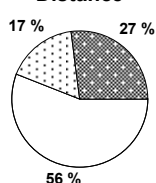
	1st half	2nd half	Total	Team total	Team avg
Total time played (mins)	46'05"	47'14"	93'19"		
Low activity time spent (%)	80%	83%	82%	85%	
Medium activity time spent (%)	10%	8%	9%	7%	
High activity time spent (%)	10%	9%	9%	8%	
Distance covered (metres)	5,266	5,271	10,537	100,549	9,141
Low activity distance covered (metres)	2,924	3,023	5,947	62,015	5,638
Medium activity distance covered (metres)	948	842	1,790	14,137	1,285
High activity distance covered (metres)	1,394	1,406	2,800	24,398	2,218
Top speed (km/h)	20.86	21.40	21.40	29.41	21.52
Sprints	56	48	104	1005	114

Heat map



Direction of play →

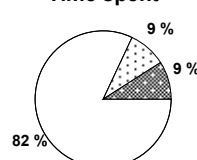
Distance



Activity



Time spent



FIFA does not vouch for the accuracy of technical statistics compiled in association with its competition results system partner.

MON 28 JUN 2010; 22:31 CET / 22:31 local time - Version 1

Page1/0

2010 FIFA World Cup South Africa™

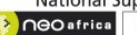
FIFA Partners



FIFA World Cup Sponsors



National Supporters



# Player Statistics



Round of 16

## Brazil - Chile 3:0 (2:0)

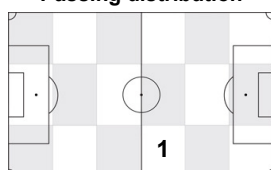
Johannesburg / Ellis Park Stadium / RSA



**Brazil**  
**20 KLEBERSON**  
Midfield

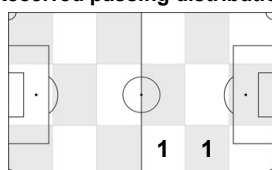
	1st half	2nd half	Total	Team total	Team avg
Goal(s) scored	0	0	0	3	
Attempts on/off target	0	0	0	17	
Assist(s)	0	0	0	3	
Offside(s)	0	0	0	1	
Save(s)	0	0	0	2	
Yellow card(s)	0	0	0	2	
Red card	0	0	0	0	
Foul(s) committed	0	0	0	14	
Delivery/solo runs into the attacking third	-	1	1	45	4.3
Delivery/solo runs into the penalty area	-	0	0	15	1.5
Tackles gaining the ball	-	0	0	3	0.3
Tackles not gaining the ball	-	0	0	2	0.2
Tackles suffered losing the ball	-	0	0	2	0.2
Tackles suffered not losing the ball	-	0	0	1	0.1
Clearances Completed	-	0	0	4	0.4
Clearances Attempted	-	0	0	11	1.1

Passing distribution



Direction of play →

Received passing distribution

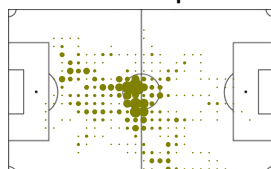


Direction of play →

## Activities

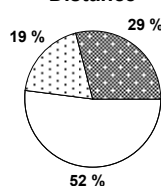
	1st half	2nd half	Total	Team total	Team avg
Total time played (mins)	0'00"	11'50"	11'50"		
Low activity time spent (%)	0%	78%	78%	85%	
Medium activity time spent (%)	0%	10%	10%	7%	
High activity time spent (%)	0%	12%	12%	8%	
Distance covered (metres)	-	1,528	1,528	100,549	9,141
Low activity distance covered (metres)	-	801	801	62,015	5,638
Medium activity distance covered (metres)	-	285	285	14,137	1,285
High activity distance covered (metres)	-	443	443	24,398	2,218
Top speed (km/h)	-	21.13	21.13	29.41	21.52
Sprints	-	18	18	1005	114

Heat map



Direction of play →

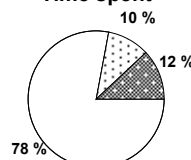
Distance



Activity



Time spent



FIFA does not vouch for the accuracy of technical statistics compiled in association with its competition results system partner.

MON 28 JUN 2010; 22:31 CET / 22:31 local time - Version 1

Page1/0

2010 FIFA World Cup South Africa™

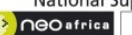
FIFA Partners



FIFA World Cup Sponsors



National Supporters



# Player Statistics



Round of 16

**Brazil - Chile 3:0 (2:0)**

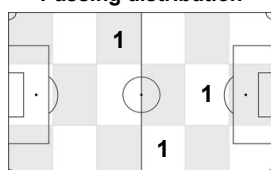
Johannesburg / Ellis Park Stadium / RSA



**Brazil**  
**21 NILMAR**  
Forward

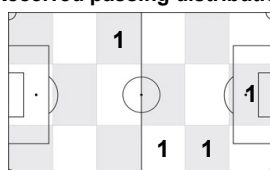
	1st half	2nd half	Total	Team total	Team avg
Goal(s) scored	0	0	0	3	
Attempts on/off target	0	1	1	17	
Assist(s)	0	0	0	3	
Offside(s)	0	0	0	1	
Save(s)	0	0	0	2	
Yellow card(s)	0	0	0	2	
Red card	0	0	0	0	
Foul(s) committed	0	2	2	14	
Delivery/solo runs into the attacking third	-	1	1	45	4.3
Delivery/solo runs into the penalty area	-	0	0	15	1.5
Tackles gaining the ball	-	0	0	3	0.3
Tackles not gaining the ball	-	0	0	2	0.2
Tackles suffered losing the ball	-	0	0	2	0.2
Tackles suffered not losing the ball	-	0	0	1	0.1
Clearances Completed	-	0	0	4	0.4
Clearances Attempted	-	0	0	11	1.1

Passing distribution



Direction of play →

Received passing distribution

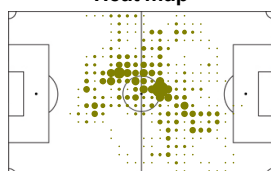


Direction of play →

## Activities

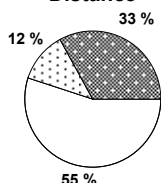
	1st half	2nd half	Total	Team total	Team avg
Total time played (mins)	0'00"	16'57"	16'57"		
Low activity time spent (%)	0%	83%	83%	85%	
Medium activity time spent (%)	0%	7%	7%	7%	
High activity time spent (%)	0%	10%	10%	8%	
Distance covered (metres)	-	1,919	1,919	100,549	9,141
Low activity distance covered (metres)	-	1,057	1,057	62,015	5,638
Medium activity distance covered (metres)	-	227	227	14,137	1,285
High activity distance covered (metres)	-	635	635	24,398	2,218
Top speed (km/h)	-	18.97	18.97	29.41	21.52
Sprints	-	30	30	1005	114

Heat map

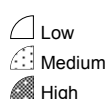


Direction of play →

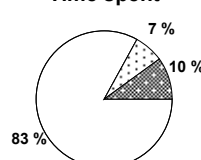
Distance



Activity



Time spent



FIFA does not vouch for the accuracy of technical statistics compiled in association with its competition results system partner.

MON 28 JUN 2010; 22:31 CET / 22:31 local time - Version 1

Page1/0

2010 FIFA World Cup South Africa™

FIFA Partners



FIFA World Cup Sponsors



National Supporters



