

# Team Tracking Statistics

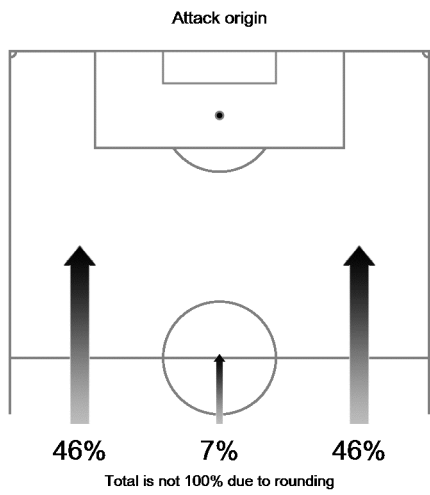
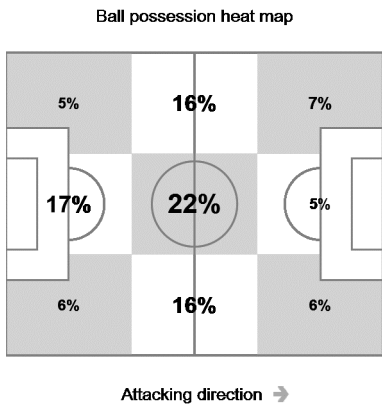
Group A

## Cameroon - Brazil 1 : 4 ( 1 : 2 )

# 33 23 JUN 2014 17:00 Brasilia / Estadio Nacional / BRA



Cameroon



| #  | Name          | Time   | Distance covered (metres) |         |              | Time spent |          |           | Sprints | Top speed    | Activity time spent |        |      |
|----|---------------|--------|---------------------------|---------|--------------|------------|----------|-----------|---------|--------------|---------------------|--------|------|
|    |               |        | Total                     | In Poss | Not in Poss  | Opp. Half  | Att. 3rd | Pen. Area |         |              | Low                 | Medium | High |
| 16 | ITANDJE       | 95'17" | 3,830                     | 971     | 1,417        |            |          |           | 1       | 21.64        | 98%                 | 1%     | 1%   |
| 3  | NKOULOU       | 95'17" | 8,325                     | 2,422   | 3,298        | 11%        | 1%       |           | 38      | 27.79        | 88%                 | 5%     | 7%   |
| 7  | NGUEMO        | 95'17" | 10,163                    | 3,214   | 3,912        | 49%        | 16%      | 1%        | 30      | 24.12        | 80%                 | 9%     | 11%  |
| 8  | MOUKANDJO     | 59'07" | 5,996                     | 1,843   | 2,340        | 58%        | 28%      | 4%        | 19      | 27.40        | 85%                 | 8%     | 7%   |
| 10 | ABOUBAKAR     | 72'34" | 7,227                     | 2,310   | 2,722        | 78%        | 37%      | 7%        | 20      | 27.79        | 84%                 | 8%     | 8%   |
| 12 | BEDIMO        | 95'17" | 9,025                     | 2,770   | 3,580        | 28%        | 9%       | 2%        | 41      | 30.89        | 85%                 | 6%     | 9%   |
| 13 | CHOUPO MOTING | 81'31" | 8,360                     | 2,701   | 3,199        | 62%        | 23%      | 6%        | 32      | 27.54        | 83%                 | 7%     | 10%  |
| 17 | MBIA          | 95'17" | 10,498                    | 3,076   | 4,044        | 38%        | 10%      | 3%        | 36      | 29.77        | 80%                 | 10%    | 10%  |
| 18 | ENOH          | 95'17" | <b>10,549</b>             | 3,222   | <b>4,189</b> | 52%        | 18%      | 1%        | 36      | 28.33        | 80%                 | 9%     | 11%  |
| 21 | MATIP         | 95'17" | 8,600                     | 2,520   | 3,200        | 15%        | 8%       | 4%        | 32      | 27.04        | 88%                 | 5%     | 7%   |
| 22 | NYOM          | 95'17" | 9,670                     | 2,962   | 3,701        | 24%        | 8%       | 8%        | 47      | 29.38        | 84%                 | 6%     | 10%  |
| 11 | MAKOUN        | 13'46" | 1,139                     | 283     | 366          | 56%        | 27%      |           | 1       | 21.02        | 87%                 | 6%     | 7%   |
| 15 | WEBO          | 22'42" | 2,231                     | 676     | 693          | 76%        | 38%      | 6%        | 12      | 23.33        | 84%                 | 7%     | 9%   |
| 20 | SALLI         | 36'10" | 3,696                     | 1,444   | 1,085        | 69%        | 27%      | 1%        | 17      | <b>31.25</b> | 83%                 | 8%     | 9%   |

In Poss: Team in possession      Opp. Half: In opposing half      Bold values: top performing in the match  
 Not In Poss: Opposite team in possession      Att. 3rd: In attacking third  
 Pen. Area: In penalty area

FIFA does not vouch for the accuracy of technical statistics compiled in association with its competition results system partner.

